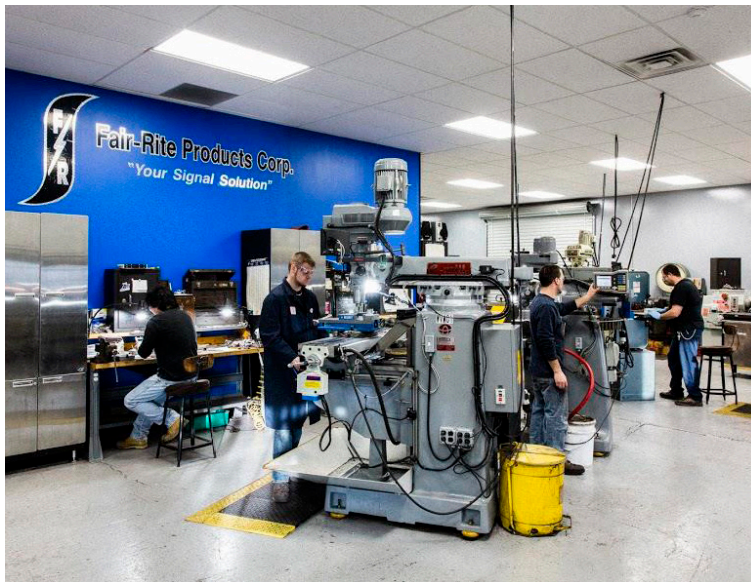
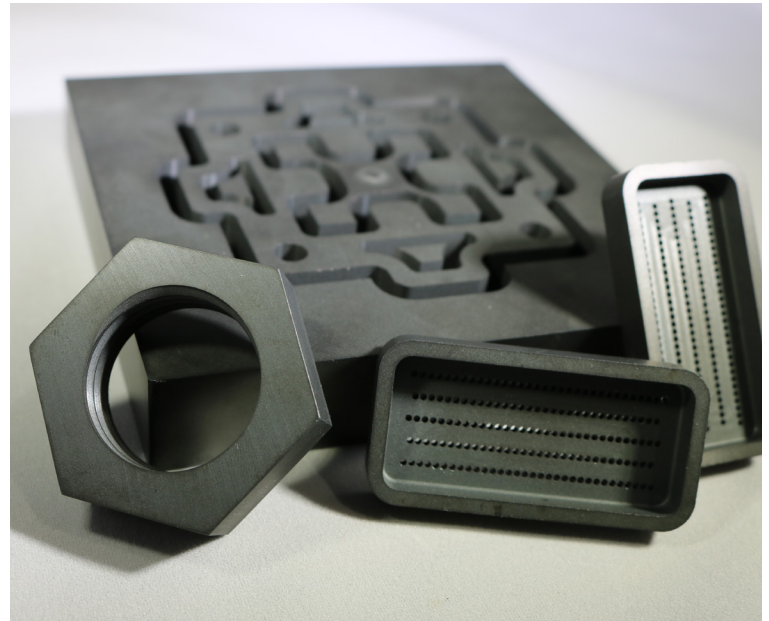


MACHINING CAPABILITIES

Fair-Rite has state-of-the-art equipment to provide you with quick-turn prototypes for proof of concept prior to production tooling commitment. This allows our customers to quickly evaluate their design, experiment with different variations and determine the final product while maintaining their development schedule and budget.

In a world of continuous innovation, rapid prototyping is essential. Machining parts reduces lead-times from months to weeks and is significantly more cost-effective than fabricating tooling when designs are changing between prototype runs. The ability to machine parts on small-scale production is useful for those with evolving designs. Engineering assistance is available to guide you through the prototyping process to ensure the best performance in your application.

Being a ferrite manufacturer, Fair-Rite ensures the quality of our material before it reaches prototyping – meaning fewer defects and a superior end-result. With our extensive experience with ferrite manufacturing, we are able to help move from small to large scale production seamlessly. Our engineers will provide input to design for manufacturability, ensuring the most cost-effective processes are used while still maintaining design integrity.



Once the design is finalized, Fair-Rite will work with you to determine appropriate mechanical and electrical specifications to ensure meaningful testing for the customer's application.

For more information about our machining capabilities, please contact our Business Development Manager,

Jerry Barbaro at barbaroj@fair-rite.com
or (845) 895-2055 extension 603.

CAPABILITIES INCLUDE:

- CNC machining
- Gapping
- Drilling
- Slicing
- Milling
- Surface
- Grinding
- Profile Grinding
- ID (Inner Diameter) Grinding
- OD (Outer Diameter) Grinding
- Lapping
- Slotting
- Cutting