



TRIAD

M A G N E T I C S

PRODUCT LINE/DESCRIPTION

ELECTRICAL SPECIFICATIONS AT 25° C

TY-146P AUDIO TRANSFORMER PC MOUNT

These transformers operate in the 200 Hz to 15,000 Hz range, making them suitable for a broad application spectrum in the audio industry. These devices are used in line matching, telephone coupling, pulse trigger, driver, interstage, output, isolation and input applications.

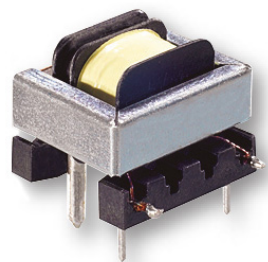
Primary Impedance: 600Ω CT / 150Ω + 15% with 600Ω load
Secondary Impedance: 600Ω CT / 150Ω
Output: 1W
Primary DC Unbalance: 0 Ma
Frequency Response: + 2db from 200 to 15,000 Hz
Impedance Matching: 10% over full frequency range
Longitudinal Balance: > 45db
Insertion Loss @ 1K Hz: < 1.5db 9.
Return Loss: > 26db 10. Total Harmonic Distortion < 0.5% between 275Hz and 3.5KHz



CSE187L CURRENT SENSE / LOW FREQUENCY TRANSFORMERS

Triad's low frequency current sense transformers are designed to monitor current from 0.1 to 30 amperes at frequencies from 50 Hz to 400 Hz. This product is also available in potted coil construction as CSE187L-P.

Turns ratio: Primary to sense 1: 500
Suggested burden resistor: 60Ω for 110mV/A
Primary DCR: 250 micro ohms maximum
Sense DCR: 21 ohms maximum
Operating Temperature: -40°C to 105°C
Maximum input: 30Arms, 0-240VAC circuit
Maximum output voltage: 4.0Vrms (Burden resistor value must be selected to not exceed this voltage)



CST-1005 50/60 HZ CURRENT SENSE TRANSFORMERS

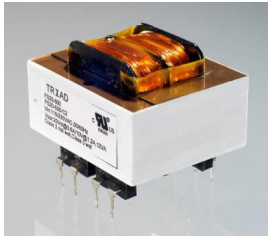
Triad current sense transformers are used to detect the current passing through a conductor. These transformers are very reliable and operate efficiently at 50/60 Hz.

IP Amps: 5
Turns Ratio: 1000:1
Terminating Resistor: Ohms: 100 Watts: .0025
DCR (Ω) Nominal: 40
Volts/Amp@ rated IP for various loads (Ω):
100: .0958, **500:** 4490, **2K:** 1.3694, **5K:** 1.8402
Net Weight Grams: 20



PRODUCT LINE/DESCRIPTION

ELECTRICAL SPECIFICATIONS AT 25° C



FS24-100-C2 CLASS 2/3 TRANSFORMER

The FS24-100-C2 is a series/parallel primary and dual secondary, split bobbin design which operates with either a parallel input of 115V or a series input of 230V. The secondaries are 12V @ 0.1A each.

Maximum Power: 2.5VA
Primary: Series: 230V; *Parallel:* 115V
Secondaries: 12.0V @ 0.1A each
Voltage Regulation: 25% TYP @ full load to no load
Operating Temperature: -40C to 105C
Storage Temperature: -55C to 150C
Hipot tested: 100% at 4200 VRMS pri to sec



VPS24-1000 POWERTRANSFORMER CHASSIS MOUNT: QUICK-CONNECT WORLD SERIES™

Power Transformer 4000VAC 25VA 10Term.
Quick Connect Flange Mount

Maximum Power: 25VA
Primary: Series: 230VAC@50/60Hz;
Parallel: 115VAC@50/60Hz
Secondary: Series1: 24V CT@ 1.0A;
Parallel2: 12.0V @ 2.0A
Voltage Regulation: 25% TYP @ full load to no load
Temperature Rise: 40C TYP



TCT40-06E07AB CONTROL TRANSFORMER CLASS 2

Triad control transformers come with tamper resistant shrouds for safety and a steel bracket welded to the bottom of the transformer for ease of mounting.

Maximum Power: 40VA
Input: 120V, 50/60 Hz, 240V, 50/60Hz
Output: 24V @ 1.67Amps
Voltage Regulation: 15% TYP @ full load to no load
Temperature Rise: <40°C TYP
Hipot: 1500VAC – Input to Output, Input & Output to Core



VPM48-1040 POWER TRANSFORMER CHASSIS MOUNT : TOROIDAL MEDICAL SERIES

The toroidal construction inherently reduces stray fields, increases efficiency and minimizes size compared to traditional EI transformers. The addition of a Flux Band further reduces the remaining stray fields.

Maximum Power: 50VA
Input Voltages: 100, 120, 220, 240VAC, 50/60Hz
Output Voltages: 24VAC @ 2.08A or 48VAC CT @ 1.04A
Voltage Regulation: 11.5% TYP from full load to no load
Temperature Rise: 45°C TYP
Hipot: 4000VAC, Primary to Secondary, Primary & Secondary to Shield & mounting surface



WAU240-500-SG WALL PLUG-IN POWER SUPPLY, 24 VAC @ 500MA, CULUS, LEVEL VI, SCREW TERMINALS W/PASS THROUGH GROUND

Plug-In Adapter, Single 24VAC, 0.5A, 12VA

Efficiency Level: VI
Power Output: 12VA
Primary Rating: 120VAC 60Hz
Secondary Rating: 24VAC, 500mA
Temperature Rise: 30 Deg C Max at rated load
UL/cUL File: E341931, UL 1310 (Tab Parts UL only)
Dimensions (mm): Height: 79.6 Width: 59.7 Depth: 48.1



WSU120-1000 WALL PLUG - INS

These energy efficient plug-in power sources eliminate the need for internal power supply cooling devices, thereby reducing noise level, size and weight of the end product.

Efficiency Level: VI
Input Voltage rating: 100-240VAC, 50-60Hz
Input Voltage range: 90-264VAC
Input current: <0.4A(RMS) @ 115VAC*
Max Inrush Current: <60A peak @ 115VAC (Cold start)*
Output Voltage: 12VDC
Output Current: 1.0A