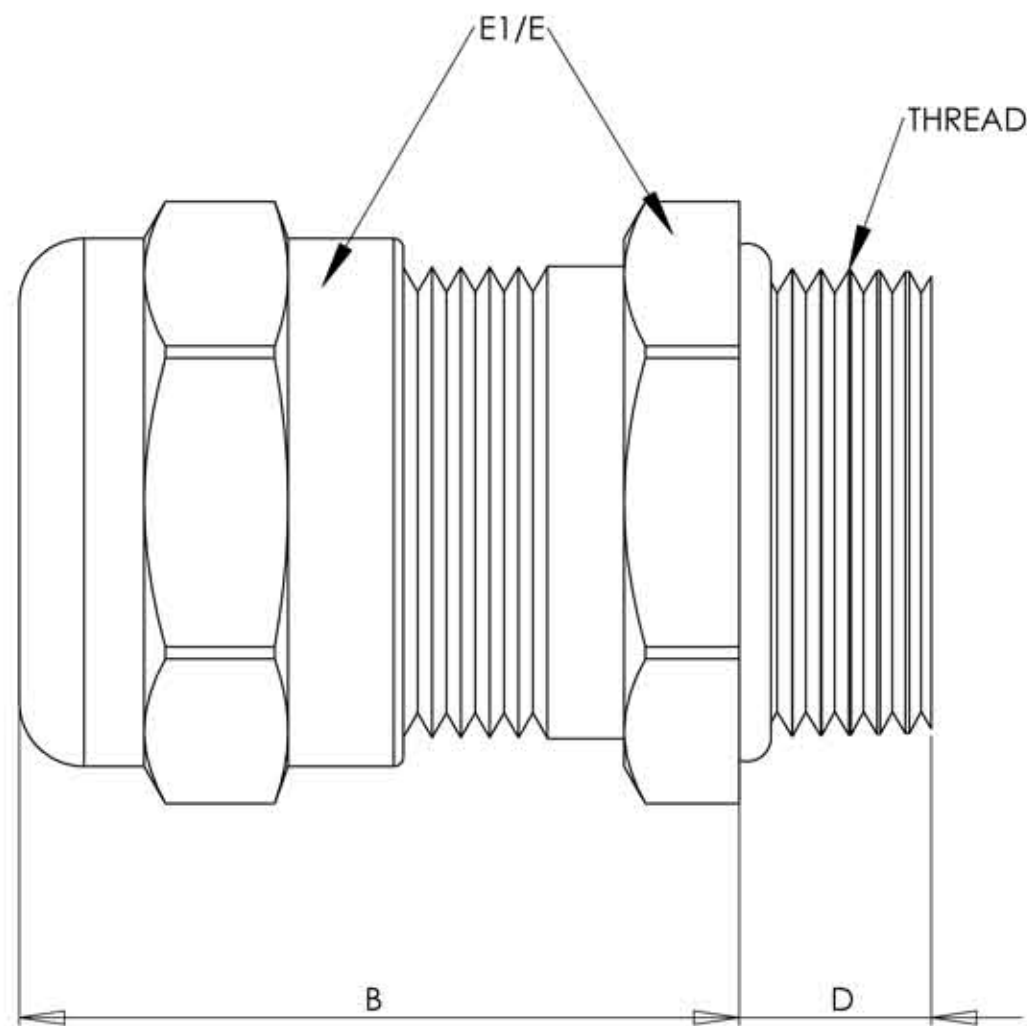


SPECIFICATIONS:

Pressure rating:
150 PSIG (10 BAR) NEMA 4x and 6
(Submersible) IP68

Materials:
Body & Nut: Stainless Steel (304)
Splined Bushing: PA (PVDF)
Form Seal & O-Ring: Buna-N or FPM

Operating Temperature:
Buna-N :-40°F to 212°F (-40°C to 100°C)
PVDF: -95°F to 302°F (-35°C to 150°C)
Short Term: 248°F / 356°F (120°C / 180°C)

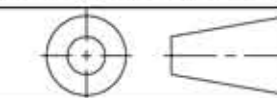


PART NUMBERS		CABLE RANGE inches (mm)	THREAD TYPE AND SIZE For threads specs see page 29	DIMENSIONS INCHES (MM)			
Dome Fittings	Dome Fittings			A Clearance Hole $+0.010^{+0.25}$ 0	B Body Height Dome Fittings	D Thread Length Fittings	E1/E Wrenching Flats
CD12MA-6S CD12MR-6S	CD12MA-6V CD12MR-6V	.11 - .26 (3 - 6.5) .08 - .20 (2 - 5)	M12 x 1.5	.47 (12.0)	.75 (19)	.20 (5)	.55 (14)
CD07AA-6S CD07AR-6S	CD07AA-6V CD07AR-6V	.11 - .26 (3 - 6.5) .08 - .20 (2 - 5)	PG 7	.49 (12.5)	.75 (19)	.20 (5)	.55 (14)
CD09AA-6S CD09AR-6S	CD09AA-6V CD09AR-6V	.16 - .31 (4 - 8) .08 - .24 (2 - 6)	PG 9	.60 (15.2)	.83 (21)	.24 (6)	.67 (17)
CD16MA-6S CD16MR-6S	CD16MA-6V CD16MR-6V	.20 - .39 (5 - 10) .11 - .27 (3 - 7)	M16 x 1.5	.63 (16.0)	.87 (22)	.24 (6)	.87 (22)
CD11AA-6S CD11AR-6S	CD11AA-6V CD11AR-6V	.20 - .39 (5 - 10) .11 - .27 (3 - 7)	PG 11	.73 (18.5)	.87 (22)	.24 (6)	.87 (22)
CD20MA-6S CD20MR-6S	CD20MA-6V CD20MR-6V	.39 - .55 (10 - 14) .27 - .47 (7 - 12)	M20 x 1.5	.79 (20.0)	.91 (23)	.24 (6)	.94 (24)
CD13AA-6S CD13AR-6S	CD13AA-6V CD13AR-6V	.24 - .47 (6 - 12) .20 - .35 (5 - 9)	PG 13	.80 (20.3)	.94 (24)	.26 (6.5)	.87 (22)
CD16AA-6S CD16AR-6S	CD16AA-6V CD16AR-6V	.39 - .55 (10 - 14) .27 - .47 (7 - 12)	PG 16	.88 (22.3)	.91 (23)	.26 (6.5)	.94 (24)
CD25MA-6S CD25MR-6S	CD25MA-6V CD25MR-6V	.51 - .71 (13 - 18) .35 - .63 (9 - 16)	M25 x 1.5	.98 (25.0)	.94 (24)	.27 (7)	1.18 (30)
CD21AA-6S CD21AR-6S	CD21AA-6V CD21AR-6V	.51 - .71 (13 - 18) .35 - .63 (9 - 16)	PG 21	1.12 (28.4)	.94 (24)	.27 (7)	1.18 (30)
CD32MA-6S CD32MR-6S	CD32MA-6V CD32MR-6V	.67 - .98 (17 - 25) .51 - .79 (13 - 20)	M32 x 1.5	1.26 (32.0)	1.14(29)	.31 (8)	1.61 (41)
CD29AA-6S CD29AR-6S	CD29AA-6V CD29AR-6V	.71 - .98 (18 - 25) .51 - .79 (13 - 20)	PG 29	1.47 (37.3)	1.14(29)	.31 (8)	1.61 (41)
CD40MA-6S CD40MR-6S	CD40MA-6V CD40MR-6V	.94 - 1.30 (24 - 33) .79 - 1.02 (20 - 26)	M40 x 1.5	1.57 (40.0)	1.38(35)	.31 (8)	1.97 (50)
CD36AA-6S CD36AR-6S	CD36AA-6V CD36AR-6V	.87 - 1.26 (22 - 32) .79 - 1.02 (20 - 26)	PG 36	1.85 (47.0)	1.38(35)	.31 (8)	1.97 (50)

NOTES:

- 1) GENERAL DIMENSIONS DRAWINGS.
- 2) DIMENSIONS [] ARE IN INCHES.
- 3) DIMENSIONS NOTED ARE FOR REFERENCE ONLY.

Third angle projection



14853 HINDSDALE AVE, SUITE D
CENTENNIAL, CO 80112-4240, USA
TEL: +1-303-699-1135
TOLL FREE: +1-800-456-9012
E MAIL: info@sealconusa.com,
WEBSITE: www.sealconusa.com

