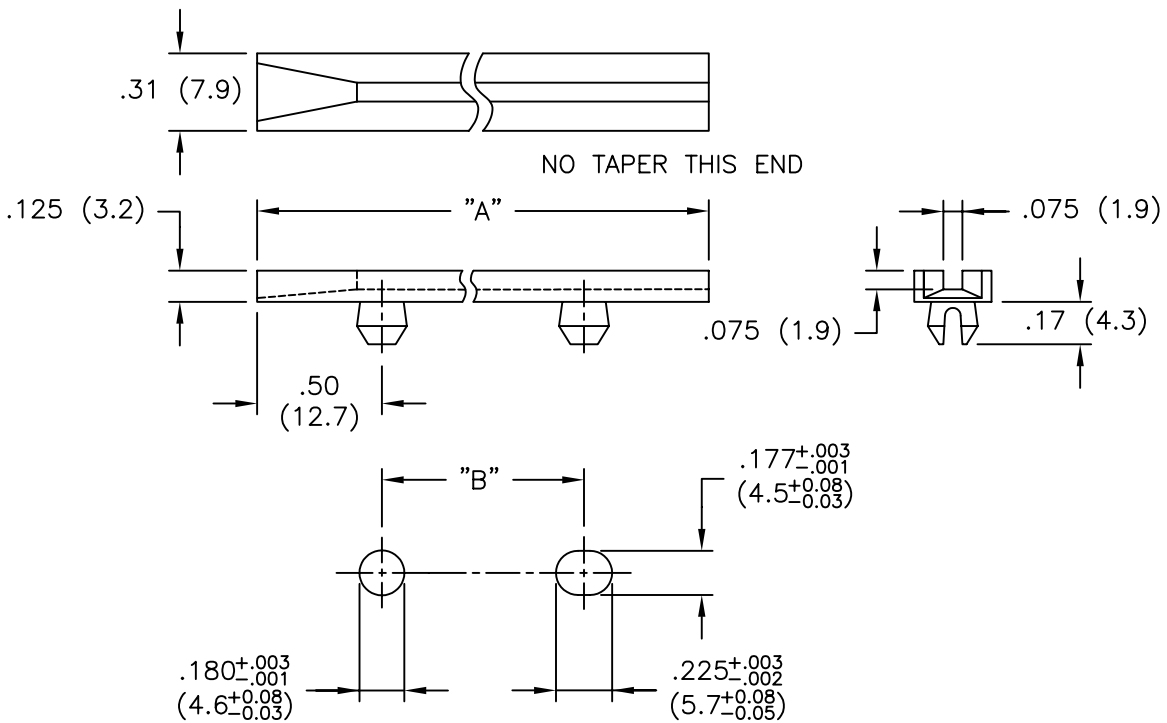


| PART NO. | "A" REF. | "B" ±1/64 (±0.4) | INTERCHANGE WITH SCANBE |
|---------------|-------------|------------------|-------------------------|
| RSSD-250 | 2.5 (63.5) | 1.5 (38.1) | 23071-1 |
| RSSD-300 | 3.0 (76.2) | 2.0 (50.8) | 23071-2 |
| RSSD-350 | 3.5 (88.9) | 2.5 (63.5) | |
| RSSD-400 | 4.0 (101.6) | 3.0 (76.2) | 23071-3 |
| RSSD-450 | 4.5 (114.3) | 3.5 (88.9) | |
| RSSD-450-300X | 4.5 (114.3) | 3.0 (76.2) | 23071-4 |
| RSSD-500 | 5.0 (127.0) | 4.0 (101.6) | |
| RSSD-550 | 5.5 (139.7) | 4.5 (114.3) | |
| RSSD-600 | 6.0 (152.4) | 5.0 (127.0) | 23071-5 |
| RSSD-650 | 6.5 (164.1) | 5.5 (139.7) | 23071-6 |
| RSSD-700 | 7.0 (177.8) | 6.0 (152.4) | |
| RSSD-750 | 7.5 (190.5) | 6.5 (165.1) | |
| RSSD-800 | 8.0 (203.2) | 7.0 (177.8) | |



RECOMMENDED MOUNTING HOLES
 PANEL THICKNESS: .047-.090 (1.2-2.3)

NOTES:

1. MATERIAL: NYLON 6/6 (RMS-48)
2. COLOR: NATURAL.

| | | |
|-----|-----------------------------------|----------------|
| E | COMPLETELY REDRAWN | SM 02.11.02 |
| D | CHANGED FILE NO. | SM 05.14.01 |
| C | DIM. .225 (5.7) WAS .255 (6.5) | RS 01.25.93 |
| B | DIM. "A" WAS REF. | RS 11.25.92 |
| A | METRIC DIMS CORRECTED | RS 08.17.92 |
| REV | DESCRIPTION | ENGR DATE |

TITLE: SNAP-IN CARD GUIDE



DWG IN
IN (MM)

FINAL

| | | | | | |
|--|------------------|--|------|---------------------|---------------------|
| TOLERANCES UNLESS NOTED .XX=±.010 .XXX=±.005 FRAC=±1/64 ANG=±1° | FILE # RSSD | DWN: P.B. | APP: | PART # SEE TABLE | PRINT TYPE CA |
| | MAT'L: SEE NOTES | DT: 04-04-94 | DT: | | |
| | RE: RICHCO, INC. | RICHCO INC. PO BOX 804238, CHICAGO, 60680 (773) 539-4060 | | | |