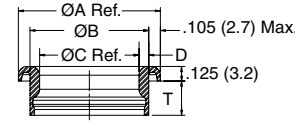
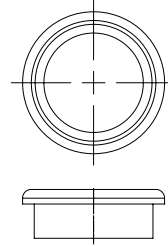


GROMMETS

GFA
NAS1368 Flip Grommet



Specifications:

- Material: UL94 V-2 Nylon 6/6
- Color: Natural

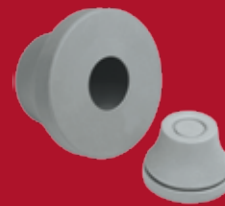
Features:

- Installed by inserting the "un-flipped" grommet into the hole. Forming dies (not supplied by Essentra) on each side of the hole are pressed together until the grommet "flips" over itself, creating a flange on both sides of the hole
- The dies can be attached to a toggle type clamp, a pneumatic tool, or a bolt and nut through the center
- Meets NAS 1368 Standard
- Protects wires, cable, and tubing passing through holes

Item No.	NAS Part No.	Mounting Hole Ø		Max Recommended Panel Thickness		NAS1368 Panel Thickness Range		T		A Ref.		B		C Ref.		D		Bulk Pack Qty.
		In	mm	In	mm	In	mm	In	mm	In	mm	In	mm	In	mm	In	mm	
GFA-N4A	NAS1368-N4A	0.375	9.5	0.030	0.8	0.025-0.080	0.6-2.0	0.235	6.0	0.567	14.4	0.367	9.3	0.251	6.4	0.058	1.5	100
GFA-N4B	NAS1368-N4B	0.375	9.5	0.100	2.5	0.081-0.140	2.1-3.6	0.295	7.5	0.567	14.4	0.367	9.3	0.251	6.4	0.058	1.5	100
GFA-N6A	NAS1368-N6A	0.500	12.7	0.030	0.8	0.025-0.080	0.6-2.0	0.235	6.0	0.692	17.6	0.492	12.5	0.376	9.6	0.058	1.5	100
GFA-N6B	NAS1368-N6B	0.500	12.7	0.090	2.3	0.081-0.140	2.1-3.6	0.295	7.5	0.692	17.6	0.492	12.5	0.376	9.6	0.058	1.5	100
GFA-N6C	NAS1368-N6C	0.500	12.7	0.160	4.1	0.141-0.200	3.6-5.1	0.360	9.1	0.692	17.6	0.492	12.5	0.376	9.6	0.058	1.5	100
GFA-N8A	NAS1368-N8A	0.625	15.9	0.030	0.8	0.025-0.080	0.6-2.0	0.235	6.0	0.815	20.7	0.615	15.6	0.499	12.7	0.058	1.5	100
GFA-N8B	NAS1368-N8B	0.625	15.9	0.090	2.3	0.081-0.140	2.1-3.6	0.295	7.5	0.815	20.7	0.615	15.6	0.499	12.7	0.058	1.5	100
GFA-N10A	NAS1368-N10A	0.781	19.8	0.030	0.8	0.025-0.080	0.6-2.0	0.235	6.0	0.971	24.7	0.771	19.6	0.605	15.4	0.083	2.1	100
GFA-N10B	NAS1368-N10B	0.781	19.8	0.080	2.0	0.081-0.140	2.1-3.6	0.295	7.5	0.971	24.7	0.771	19.6	0.605	15.4	0.083	2.1	100
GFA-N10D	NAS1368-N10D	0.781	19.8	0.210	5.3	0.201-0.250	5.1-6.4	0.420	10.7	0.971	24.7	0.771	19.6	0.605	15.4	0.083	2.1	100
GFA-N12A	NAS1368-N12A	0.906	23.0	0.020	0.5	0.025-0.080	0.6-2.0	0.235	6.0	1.096	27.8	0.896	22.8	0.730	18.5	0.083	2.1	100
GFA-N12B	NAS1368-N12B	0.906	23.0	0.070	1.8	0.081-0.140	2.1-3.6	0.295	7.5	1.096	27.8	0.896	22.8	0.730	18.5	0.083	2.1	100
GFA-N14A	NAS1368-N14A	1.031	26.2	0.020	0.5	0.025-0.080	0.6-2.0	0.235	6.0	1.221	31.0	1.021	25.9	0.855	21.7	0.083	2.1	100
GFA-N14B	NAS1368-N14B	1.031	26.2	0.070	1.8	0.081-0.140	2.1-3.6	0.295	7.5	1.221	31.0	1.021	25.9	0.855	21.7	0.083	2.1	100

Grommets

Hundreds of styles in stock to protect wires and cables



IP 67 SEALING



OPEN



QUICK FIT



STEPPED

FREE SAMPLES

OVER 1 BILLION PARTS IN STOCK

SHIPS TODAY



ESSENTRA
COMPONENTS

We Are One



The Essential Enablers



ESSENTRA
COMPONENTS

FIBER, WIRE & CABLE MANAGEMENT



BUSHINGS

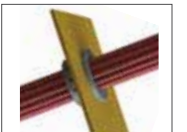
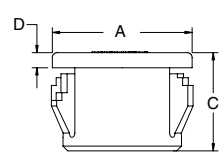
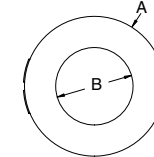
Electrical Cord Damage Potential

Where wires exit an enclosure, they can come in contact with rough or sharp edges that can wear or cut a wire, potentially leading to a short and even complete device failure.

Cable Bushings are the Solution

A cable bushing inserted into holes in enclosures to protect a wire as it passes through a hole, is the perfect solution. The bushing, or grommet, has an internal hole through which the wire passes, which is designed to be smooth and cause no harm to the wire. Essentra offers many Richco cable bushing options for a variety of holes and panel thicknesses. We have innovative solutions for wire protection through our extensive offering of bushings and grommets. If your wires are already routed and connected, then we offer retro-fit options, such as snap-in bushings, for applying the grommet over the wire, and then applied to the hole. If you have a scenario where there are forces pulling on the wire, endangering the connection, we offer product that features strain-relief protection.

PGSB / BSI Closed Insulation Bushing



Specifications:

- Material: UL94 V-2 Nylon 6/6
- Color: Black

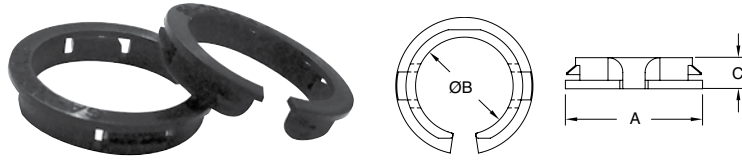
Features:

- Easy to snap into common panel thicknesses
- Protects wires, cables and tubing from sharp edges of sheet metal holes

Item No.	Approval	Mounting Hole Ø		Panel Thickness		OD A		ID B		Overall Height C		Head Height D		Bulk Pack Qty.
		In	mm	In	mm	In	mm	In	mm	In	mm	In	mm	
PGSB-0305	RU	0.189	4.8	0.063 - 0.067	1.6 - 1.7	0.260	6.5	0.125	3.2	0.240	6.0	0.051	1.4	1000
PGSB-1	RU	0.250	6.4	0.062	1.6	0.312	7.9	0.125	3.2	0.312	7.9	0.063	1.6	1000
PGSB-2	RU	0.312	7.9	0.062	1.6	0.375	9.5	0.187	4.7	0.312	7.9	0.063	1.6	1000
PGSB-3	RU	0.312	7.9	0.062	1.6	0.375	9.5	0.240	6.1	0.237	6.0	0.050	1.3	1000
PGSB-4	RU	0.375	9.5	0.031 - 0.125	0.8 - 3.2	0.468	11.9	0.187	4.7	0.406	10.3	0.055	1.4	1000
PGSB-5	RU	0.375	9.5	0.031 - 0.125	0.8 - 3.2	0.468	11.9	0.250	6.4	0.406	10.3	0.055	1.4	1000
PGSB-0710	RU	0.394	10.0	0.031 - 0.125	0.8 - 1.6	0.472	12.0	0.284	7.2	0.260	6.6	0.051	1.3	1000
PGSB-6	RU	0.437	11.1	0.031 - 0.125	0.8 - 3.2	0.531	13.5	0.270	6.9	0.406	10.3	0.055	1.4	500
PGSB-7	RU	0.437	11.1	0.031 - 0.125	0.8 - 3.2	0.531	13.5	0.312	7.9	0.406	10.3	0.055	1.4	500
PGSB-8	RU	0.437	11.1	0.031 - 0.125	0.8 - 3.2	0.531	13.5	0.243	6.4	0.406	10.3	0.055	1.4	500
PGSB-9	RU	0.468	11.9	0.062	1.6	0.531	13.5	0.343	8.7	0.250	6.4	0.050	1.3	500
PGSB-10	RU	0.500	12.7	0.031 - 0.125	0.8 - 3.2	0.578	14.7	0.250	6.4	0.406	10.3	0.063	1.6	500
PGSB-11	RU	0.500	12.7	0.031 - 0.125	0.8 - 3.2	0.578	14.7	0.312	7.9	0.406	10.3	0.063	1.6	500
PGSB-12	RU	0.500	12.7	0.062	1.6	0.562	14.3	0.375	9.5	0.250	6.4	0.063	1.6	500
PGSB-1013	RU	0.512	13.0	0.031 - 0.118	0.8	0.591	15.0	0.402	10.2	0.354	9.0	0.051	1.3	500
PGSB-13	RU	0.531	13.5	0.062	1.6	0.593	15.1	0.406	10.3	0.250	6.4	0.063	1.6	500
PGSB-14	RU	0.562	14.3	0.031 - 0.125	0.8 - 3.2	0.656	16.7	0.312	7.9	0.406	10.3	0.063	1.6	500
PGSB-15	RU	0.562	14.3	0.031 - 0.125	0.8 - 3.2	0.656	16.7	0.391	9.9	0.406	10.3	0.063	1.6	500
PGSB-16	RU	0.562	14.3	0.031 - 0.125	0.8 - 3.2	0.656	16.7	0.437	11.1	0.406	10.3	0.063	1.6	500
PGSB-17	RU	0.625	15.9	0.031 - 0.125	0.8 - 3.2	0.718	18.2	0.250	6.4	0.406	10.3	0.063	1.6	500
PGSB-18	RU	0.625	15.9	0.031 - 0.125	0.8 - 3.2	0.718	18.2	0.437	11.1	0.406	10.3	0.063	1.6	500
PGSB-19	RU	0.625	15.9	0.062	1.6	0.703	17.9	0.500	12.7	0.250	6.4	0.063	1.6	500
PGSB-1316	RU	0.630	16.0	0.055 - 0.139	1.4 - 3.5	0.709	18.0	0.504	12.8	0.413	10.5	0.059	1.5	500
PGSB-20	RU	0.687	17.5	0.031 - 0.125	0.8 - 3.2	0.781	19.8	0.500	12.7	0.406	10.3	0.063	1.6	200
PGSB-21	RU	0.687	17.5	0.031 - 0.125	0.8 - 3.2	0.781	19.8	0.562	14.3	0.406	10.3	0.063	1.6	200
PGSB-1519	RU	0.748	19.0	0.039 - 0.130	1.3	0.854	21.7	0.602	15.3	0.433	11.0	0.059	1.5	200
PGSB-22	RU	0.750	19.1	0.031 - 0.125	0.8 - 3.2	0.843	21.4	0.500	12.7	0.406	10.3	0.063	1.6	200
PGSB-23	RU	0.750	19.1	0.031 - 0.125	0.8 - 3.2	0.843	21.4	0.562	14.3	0.406	10.3	0.063	1.6	200
PGSB-24	RU	0.750	19.1	0.062	1.6	0.828	21.0	0.625	15.9	0.250	6.4	0.063	1.6	200
PGSB-25	RU	0.781	19.8	0.062	1.6	0.859	21.8	0.625	15.9	0.250	6.4	0.063	1.6	200
PGSB-1822	RU	0.866	22.0	0.035 - 0.091	0.9 - 2.3	0.976	24.8	0.717	18.2	0.453	11.5	0.059	1.5	500
PGSB-26	RU	0.875	22.2	0.031 - 0.125	0.8 - 3.2	0.953	24.2	0.500	12.7	0.453	11.5	0.063	1.6	200
PGSB-27	RU	0.875	22.2	0.031 - 0.125	0.8 - 3.2	0.953	24.2	0.562	14.3	0.453	11.5	0.063	1.6	200
PGSB-28	RU	0.875	22.2	0.031 - 0.125	0.8 - 3.2	0.953	24.2	0.625	15.9	0.453	11.5	0.063	1.6	200
PGSB-29	RU	0.875	22.2	0.031 - 0.125	0.8 - 3.2	0.953	24.2	0.687	17.5	0.453	11.5	0.063	1.6	200
PGSB-30	RU	0.875	22.2	0.062	1.6	0.937	23.8	0.750	19.1	0.250	6.4	0.063	1.6	200
PGSB-31	RU	1.000	25.4	0.031 - 0.125	0.8 - 3.2	1.125	28.6	0.766	19.5	0.453	11.5	0.063	1.6	200
PGSB-32	RU	1.097	27.9	0.031 - 0.125	0.8 - 3.2	1.218	31.0	0.812	20.6	0.453	11.5	0.063	1.6	100
PGSB-33	RU	1.097	27.9	0.031 - 0.125	0.8 - 3.2	1.218	31.0	0.875	22.2	0.453	11.5	0.063	1.6	100
PGSB-34	RU	1.097	27.9	0.031 - 0.125	0.8 - 3.2	1.218	31.0	0.937	23.8	0.453	11.5	0.063	1.6	100
PGSB-2428	RU	1.102	28.0	0.039 - 0.130	1.3	1.240	31.5	0.945	24.0	0.441	11.2	0.059	1.5	200
PGSB-2530	RU	1.181	30.0	0.039 - 0.122	1.3	1.319	33.5	0.984	25.0	0.453	11.5	0.071	1.8	100
PGSB-35	RU	1.250	31.8	0.031 - 0.125	0.8 - 3.2	1.312	33.3	0.937	23.8	0.453	11.5	0.063	1.6	100
PGSB-2634	RU	1.347	34.2	0.039 - 0.126	1.3	1.496	38.0	1.031	26.2	0.453				

BUSHINGS

PGSA Shallow Open Insulation Bushing

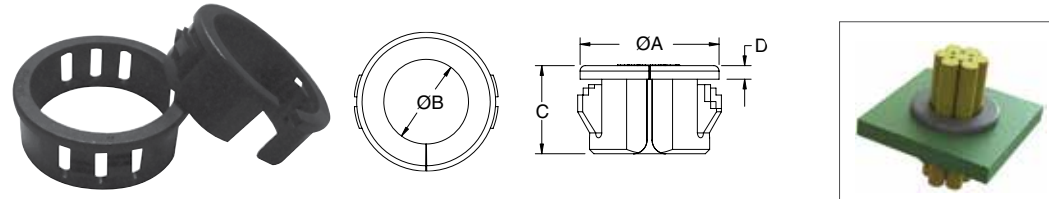


- Specifications:
- Material: UL94 V-2 Nylon 6/6
 - Color: Black

- Features:
- Molded with shallow overall height for applications with limited space
 - Open design allows bushing to be assembled into holes that already contain a bundle
 - Protects wires, cables, and tubing from sharp edges of sheet metal holes

Item No.	Approval	Mounting Hole Ø		Panel Thickness Range		OD A Ref.		ID B		Overall Height C		Bulk Pack Qty.
		In	mm	In	mm	In	mm	In	mm	In	mm	
PGSA-0407A		0.276	7.0	0.016 - 0.039	0.4 - 1.0	0.410	10.4	0.190	4.8	0.200	5.0	1000
PGSA-1013A		0.512	13.0	0.039 - 0.059	1.0 - 1.5	0.640	16.2	0.360	9.2	0.210	5.3	500
PGSA-1316A		0.630	16.0	0.039 - 0.055	1.0 - 1.4	0.760	19.4	0.480	12.2	0.210	5.4	500
PGSA-1519A		0.748	19.0	0.039 - 0.059	1.0 - 1.5	0.890	22.7	0.560	14.3	0.220	5.7	500
PGSA-1822A		0.866	22.0	0.031 - 0.063	0.8 - 1.6	1.000	25.5	0.690	17.6	0.220	5.6	500
PGSA-2024A1		0.945	24.0	0.031 - 0.047	0.8 - 1.2	1.060	27.0	0.770	19.5	0.210	5.3	500
PGSA-2024A		0.945	24.0	0.039 - 0.063	1.0 - 1.6	1.060	27.0	0.770	19.5	0.210	5.3	500
PGSA-2327A		1.067	27.1	0.016 - 0.039	0.4 - 1.0	1.380	35.1	0.900	22.9	0.240	6.0	200
PGSA-2529A		1.142	29.0	0.016 - 0.043	0.4 - 1.1	1.380	35.1	0.970	24.5	0.280	7.0	200

PGSB-A Standard Open Insulation Bushing

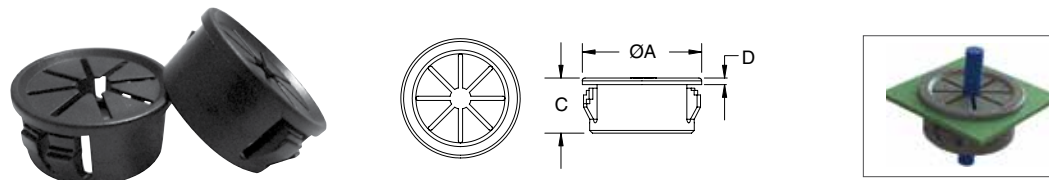


- Specifications:
- Material: UL94 V-2 Nylon 6/6
 - Color: Black

- Features:
- Easy to push in design locks into place at common panel thicknesses
 - Split design allows bushing to be assembled into holes that already contained a bundle
 - Protects wires, cables, and tubing from sharp edges of sheet metal holes

Item No.	Approval	Mounting Hole		Panel Thickness Range		OD A Ref.		ID B		Overall Height C		Head Height D		Bulk Pack Qty.
		In	mm	In	mm	In	mm	In	mm	In	mm	In	mm	
PGSB-0609A		0.375	9.5	0.028 - 0.067	0.7 - 1.7	0.450	11.4	0.260	6.6	0.260	6.5	0.051	1.3	1000
PGSB-1A		0.375	9.5	0.031 - 0.125	0.8 - 3.2	0.420	10.7	0.265	6.7	0.390	9.9	0.051	1.3	1000
PGSB-2A		0.437	11.1	0.031 - 0.125	0.8 - 3.2	0.50	12.7	0.312	7.9	0.406	10.3	0.063	1.6	1000
PGSB-1013A		0.512	13.0	0.031 - 0.138	0.8 - 3.5	0.590	14.9	0.350	9.0	0.410	10.5	0.059	1.5	500
PGSB-3A		0.562	14.3	0.031 - 0.125	0.8 - 3.2	0.640	16.3	0.390	9.9	0.406	10.3	0.063	1.6	500
PGSB-1216A		0.650	16.5	0.028 - 0.130	0.7 - 3.3	0.730	18.6	0.480	12.3	0.390	10.0	0.039	1.0	500
PGSB-1316A		0.630	16.0	0.047 - 0.138	1.2 - 3.5	0.710	18.0	0.410	10.5	0.410	10.5	0.063	1.6	500
PGSB-1519A		0.748	19.0	0.047 - 0.130	1.2 - 3.3	0.810	20.6	0.570	14.5	0.430	11.0	0.051	1.3	200
PGSB-1822A		0.866	22.0	0.039 - 0.138	1.0 - 3.5	0.980	24.8	0.680	17.3	0.450	11.5	0.063	1.6	200
PGSB-9A		0.984	25.0	0.031 - 0.118	0.8 - 3.0	1.039	26.4	0.803	20.4	0.406	10.3	0.063	1.6	200
PGSB-4A		1.000	25.4	0.031 - 0.125	0.8 - 3.2	1.047	26.6	0.812	20.6	0.406	10.3	0.063	1.6	200
PGSB-5A		1.093	27.8	0.031 - 0.125	0.8 - 3.2	1.156	29.4	0.875	22.2	0.406	10.3	0.063	1.6	200
PGSB-6A		1.250	31.8	0.031 - 0.125	0.8 - 3.2	1.343	34.1	1.046	26.6	0.406	10.3	0.063	1.6	200
PGSB-7A		1.375	34.9	0.031 - 0.125	0.8 - 3.2	1.468	37.3	1.171	29.7	0.406	10.3	0.063	1.6	200
PGSB-8A		1.500	38.1	0.031 - 0.125	0.8 - 3.2	1.578	40.1	1.250	31.7	0.421	10.7	0.063	1.6	200

PGSD Universal Bushing



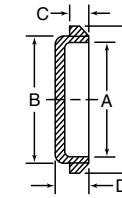
- Specifications:
- Material: UL94 V-2 Nylon 6/6
 - Color: Black

- Features:
- Absorbs vibration and cushions and insulates bundles

Item No.	Approval	Mounting Hole		Max Panel Thickness		OD A		Max ID		Overall Height C		Head Height D		Bulk Pack Qty.
		In	mm	In	mm	In	mm	In	mm	In	mm	In	mm	
PGSD-1		0.500	12.7	0.062	1.8	0.600	15.2	0.312	7.9	0.250	6.4	0.063	1.6	500
PGSD-5		0.500	12.7	0.125	3.2	0.600	15.2	0.312	7.9	0.385	9.8	0.041	1.0	500
PGSD-2		0.625	15.9	0.062	1.8	0.729	18.5	0.437	11.1	0.250	6.4	0.063	1.6	500
PGSD-6		0.625	15.9	0.125	3.2	0.729	18.5	0.437	11.1	0.406	10.3	0.063	1.6	500
PGSD-3		0.750	19.1	0.062	1.8	0.844	21.4	0.500	12.7	0.250	6.4	0.063	1.6	200
PGSD-7		0.750	19.1	0.125	3.2	0.844	21.4	0.500	12.7	0.390	9.9	0.047	1.2	200
PGSD-4		0.875	22.2	0.062	1.8	0.937	23.8	0.560	14.2	0.250	6.4	0.063	1.6	200
PGSD-8		0.875	22.2	0.125	3.2	0.937	23.8	0.560	14.2	0.453	11.5	0.063	1.6	200
PGSD-9		1.000	25.4	0.125	3.2	1.063	27.0	0.750	19.1	0.453	11.5	0.063	1.6	200
PGSD-10		1.375	34.9	0.125	3.2	1.490	37.8	1.000	25.4	0.453	11.5	0.063	1.6	100
PGSD-11		1.500	38.1	0.125	3.2	1.609	40.9	1.062	27.0	0.450	11.4	0.059	1.5	100

PLUGS

SR Recessed Sheet Metal Plug

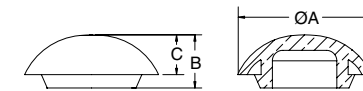


- Specifications:
- Material: Low-Density Polyethylene
 - Color: Black

- Features:
- Economical snap-in plug that provides an attractive finish and a secure fit for entry holes in sheet metal

Item No.	Hole Size	Max Metal Thickness		A		B		C		D		E		Pack Qty.	Bulk Pack Qty.
		In	mm	In	mm	In	mm	In	mm	In	mm	In	mm		
SR1/2A	0.500	0.110	2.8	0.510	13.1	0.550	14.0	0.090	2.3	0.290	7.4	0.850	21.6	1	3000
SR3/4A	0.750	0.180	4.6	0.750	19.2	0.800	20.3	0.190	4.8	0.380	9.7	1.156	29.4	1	4000
SR7/8A	0.875	0.180	4.6	0.875	22.2	0.920	23.4	0.190	4.8	0.380	9.7	1.250	31.8	1	3500
SR1A	1.000	0.150	3.8	1.000	25.4	1.043	26.5	0.096	2.4	0.319	8.1	1.377	35.0	1	3500
SR1-1/4A	1.250	0.120	3.0	1.280	32.5	1.330	33.8	0.120	3.1	0.350	8.9	1.615	41.0	1	2000
SR1-3/8A	1.375	0.190	4.8	1.375	34.9	1.437	36.5	0.200	5.1	0.410	10.4	1.750	44.5	1	1800
SR1-1/2A	1.500	0.125	3.2	1.515	38.5	1.555	39.5	0.120	3.1	0.350	8.9	1.875	47.6	1	1500
SR1-5/8A	1.625	0.190	4.8	1.625	41.3	1.688	42.9	0.200	5.1	0.410	10.4	2.000	50.8	1	1000
SR1-3/4A	1.750	0.190	4.8	1.750	44.5	1.812	46.0	0.200	5.1	0.410	10.4	2.125	54.0	1	1000
SR1-7/8A	1.875	0.190	4.8	1.875	47.6	1.937	49.2	0.200	5.1	0.410	10.4	2.250	57.2	1	900
SR2A	2.000	0.190	4.8	2.000	50.8	2.060	52.3	0.170	4.3	0.390	9.9	2.500	63.5	1	800
SR3A	3.000	0.190	4.8	3.000	76.2	3.065	77.9	0.200	5.1	0.410	10.4	3.500	88.9	1	300

LTP IP67 Liquid Tight Plug

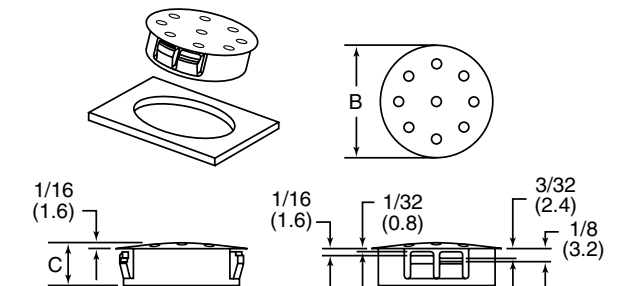


- Specifications:
- Material: UL94 V-0 Silicone
 - Color: Black

- Features:
- Offers protection up to IP67
 - Temperature Rating: -40°F to 302°F (-40°C - 150°C)

Item No.	Mounting Hole Ø		Head Ø A		Overall Height B		Head Height C		Max Panel Thickness		Pack Qty.	Bulk Pack Qty.
	In	mm	In	mm	In	mm	In	mm	In	mm		
LTP-4	0.500	12.7	0.92	23.4	0.449	11.4	0.287	7.3	0.125	3.2	1	1000
LTP-7	0.625	15.9	1.09	27.7	0.455	11.6	0.319	8.1	0.125	3.2	1	500
LTP-5	0.750	19.1	1.15	29.2	0.512	13.0	0.350	8.9	0.125	3.2	1	500
LTP-1	0.875	22.2	1.26	32.0	0.500	12.7	0.374	9.5	0.125	3.2	1	1000
LTP-6	1.000	25.4	1.41	35.8	0.559	14.2	0.398	10.1	0.125	3.2	1	200
LTP-2	1.093	27.8	1.54	39.2	0.539	13.7	0.413	10.5	0.125	3.2	1	500
LTP-3	1.375	34.9	1.82	46.2	0.579	14.7	0.433	11.0	0.125	3.2	1	200

PLV Vented Locking Plug



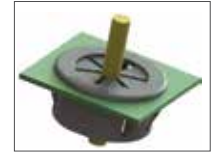
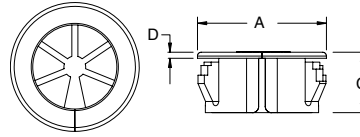
- Specifications:
- Material: UL94 V-2 Heat-Stabilized Nylon
 - Color: Black

- Features:
- Each part is designed to lock into multiple standard sheet metal thicknesses (1/64 to 1/8)
 - Provides a clean and easy way to close optional wiring or production access holes
 - Vents allow heat/emissions to escape

Item No.	Approvals	Hole Ø		Max Panel Thickness		Head Ø B		Thickness C		Bulk Pack Qty
----------	-----------	--------	--	---------------------	--	----------	--	-------------	--	---------------

BUSHINGS

PGSC
Open Universal Bushing



Specifications:

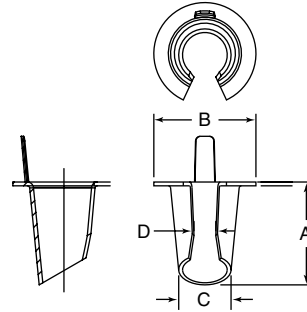
- Material: UL94V-2 Nylon 6/6
- Color: Black

Features:

- Easy to push in design locks into place at common panel thicknesses
- Open design allows bushing to be assembled into holes that already contain a bundle
- Adjust to accept various diameters and shapes

Item No.	Approval	Mounting Hole		Max Panel Thickness		OD A		Max ID		Overall Height C		Head Height D		Bulk Pack Qty.
		In	mm	In	mm	In	mm	In	mm	In	mm	In	mm	
PGSC-1319A		0.748 - 0.752	19.0 - 19.1	0.031 - 0.118	0.8 - 3.0	0.858	21.8	0.500	12.7	0.390	9.9	0.039	1.0	500
PGSC-1422A		0.874 - 0.882	22.2 - 22.4	0.031 - 0.118	0.8 - 3.0	0.937	23.8	0.563	14.3	0.453	11.5	0.039	1.0	200
PGSC-1926A		1.000 - 1.004	25.4 - 25.5	0.031 - 0.118	0.8 - 3.0	1.063	27.0	0.748	19.0	0.453	11.5	0.039	1.0	200
PGSC-2128A		1.095 - 1.102	27.8 - 28.0	0.031 - 0.118	0.8 - 3.0	1.161	29.5	0.815	20.7	0.453	11.5	0.039	1.0	200

ASB
Armor Bushing



Specifications:

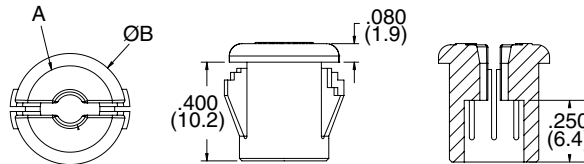
- Material: Polypropylene
- Color: Red

Features:

- Fits armored cable and flexible metal conduit sizes
- Features high dielectric strength and assures insulation on all sharp edges

Item No.	Approvals	Size	A		B		C		D		Cable Size	Trade Size	Bulk Pack Qty.
			In	mm	In	mm	In	mm	In	mm			
ASB0A		0	0.560	14.22	0.671	17.04	0.380	9.650	0.312	7.92	14/2, 14/3, 12/2	5/16	30000
ASB1A		1	0.650	16.51	0.671	17.04	0.450	11.43	0.312	7.92	14/4, 12/3, 6/1, 4/1	3/8	20000
ASB2A		2	0.610	15.49	0.859	21.82	0.580	14.73	0.125	3.18	12/4, 10/2, 10/3, 2/1	7/16	15000
ASB3A		3	0.670	17.02	1.046	26.57	0.790	20.07	0.109	2.77	10/4, 8/2, 8/3, 1/1	1/2	7500
ASB4A		4	0.830	21.08	1.266	32.15	1.000	25.40	0.156	3.96	8/4, 6/4, 6/3, 6/2, 4/3, 4/2	3/4	4000

SB
Snub Bushing



Specifications:

- Material: UL94V-2 Nylon 6/6
- Color: Black

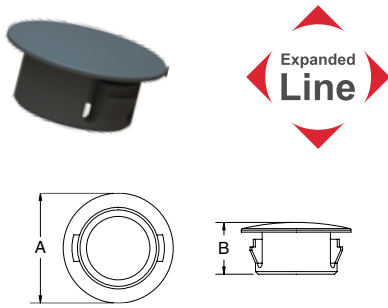
Features:

- Bushing opens to accept cable then closes firmly when installed into hole
- Provides insulation and slight strain relief

Part Number	Panel Hole		Max Panel Thickness		ID		Ø A		Overall OD B		Bulk Pack Qty.
	In	mm	In	mm	In	mm	In	mm	In	mm	
SB-1	0.375	9.5	0.125	3.2	0.150	3.8	0.360	9.1	0.450	11.4	500
SB-2	0.437	11.1	0.125	3.2	0.220	5.6	0.430	10.9	0.550	14.0	500
SB-3	0.500	12.7	0.125	3.2	0.280	7.1	0.490	12.4	0.630	16.0	500

PLUGS

PGM / PLH Standard Locking Hole Plug



Item No.	Mounting Hole		Max Panel Thickness		OD A		Overall Height B		Pack Qty.	Bulk Pack Qty.
	In	mm	In	mm	In	mm	In	mm		
PGM-4	0.189	4.8	0.067	1.7	0.236	6.0	0.205	5.2	1	1000
PGM-1	0.250	6.4	0.062	1.6	0.312	7.9	0.312	7.9	1	1000
PGM-6	0.252	6.4	0.067	1.7	0.299	7.6	0.221	5.6	1	1000
PGM-7	0.278	7.1	0.063	1.6	0.433	11.0	0.276	7.0	1	1000
PGM-8	0.307	7.8	0.063	1.6	0.375	9.5	0.236	6.0	1	1000
PGM-2	0.312	7.9	0.062	1.6	0.375	9.5	0.312	7.9	1	1000
PGM-33	0.375	9.5	0.125	3.2	0.468	11.9	0.406	6.4	1	1000
PGM-9	0.376	9.6	0.047	1.2	0.511	13.0	0.256	6.5	1	1000
PGM-10	0.386	9.8	0.055	1.4	0.511	13.0	0.236	6.0	1	1000
PGM-34	0.437	11.1	0.125	3.2	0.531	13.5	0.406	10.3	1	1000
PGM-3	0.468	11.9	0.062	1.6	0.531	13.5	0.250	6.4	1	1000
PGM-24	0.500	12.7	0.125	3.2	0.578	14.7	0.406	10.3	1	1000
PGM-5	0.500	12.7	0.062	1.6	0.562	14.3	0.250	6.4	1	1000
PGM-13	0.506	12.8	0.083	2.1	0.689	17.0	0.315	8.0	1	1000
PGM-11	0.531	13.5	0.062	1.6	0.593	15.1	0.250	6.4	1	500
PGM-26	0.562	14.3	0.125	3.2	0.656	16.7	0.406	10.3	1	200
PGM-27	0.625	15.9	0.125	3.2	0.718	18.2	0.406	10.3	1	200
PGM-12	0.625	15.9	0.062	1.6	0.718	18.2	0.250	6.4	1	500
PGM-16	0.628	16.0	0.079	2.0	0.787	20.0	0.315	8.0	1	500
PGM-28	0.687	17.5	0.125	3.2	0.781	19.8	0.406	10.3	1	200
PGM-19	0.746	19.0	0.125	3.2	0.925	23.5	0.413	10.5	1	500
PGM-14	0.750	19.1	0.062	1.6	0.843	21.4	0.250	6.4	1	500
PGM-15	0.781	19.8	0.062	1.6	0.890	22.6	0.250	6.4	1	500
PGM-22	0.864	22	0.118	3.0	1.024	26.0	0.378	9.6	1	500
PGM-17	0.875	22.2	0.062	1.6	0.968	24.6	0.250	6.5	1	500
PGM-29	0.875	22.2	0.125	3.2	1.125	28.6	0.453	11.5	1	200
PGM-25	1.004	25.5	0.125	3.2	1.102	28.0	0.500	12.7	1	200
PGM-32	1.097	27.9	0.125	3.2	1.218	30.9	0.465	11.8	1	200
PGM-30	1.203	30.6	0.125	3.2	1.339	34.0	0.512	13.0	1	200
PGM-18	1.250	31.8	0.125	3.2	1.375	34.9	0.465	11.8	1	200
PGM-20	1.375	35.0	0.125	3.2	1.500	38.1	0.465	11.8	1	200
PGM-31	1.500	38.1	0.125	3.2	1.671	42.4	0.465	11.8	1	200
PGM-21	1.750	44.5	0.125	3.2	1.906	48.4	0.465	11.8	1	100
PGM-23	2.000	50.8	0.125	3.2	2.170	55.1	0.470	11.9	1	100
PLH023A	2.500	63.5	0.250	6.4	2.775	70.5	0.750	19.1	1	500

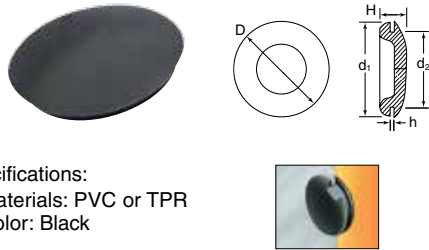
Specifications:

- Material: UL94V-2 Nylon 6/6
- Color: Black

Features:

- Each part fits multiple common sheet metal thicknesses
- Closes access sheet metal panel holes

BLANKING PLUG PVC Hole Plug



Item No.	PVC	TPR	Panel Hole d2		Panel Thickness h		OD D		Depth H		d1		Pack Qty.	Bulk Pack Qty.
			In	mm	In	mm	In	mm	In	mm	In	mm		
10860B	15150B	0.187	4.70	0.063	1.60	0.366	9.30	0.181	4.60	0.366	9.30	1	10000	
10825B	15151B	0.250	6.40	0.063	1.60	0.374	9.50	0.197	5.00	0.374	9.50	1	10000	
10832B	—	0.313	8.00	0.031	0.80	0.571	14.50	0.157	4.00	0.417	10.60	1	10000	
10233B	—	0.313	8.00	0.063	1.60	0.571	14.50	0.177	4.50	0.417	10.60	1	10000	
10488B	—	0.354	9.00	0.063	1.60	0.591	15.00	0.260	6.60	0.488	12.40	1	10000	
10912B	15155B	0.438	11.10	0.063	1.60	0.697	17.70	0.244	6.20	0.504	12.80	1	10000	
10768B	—	0.453	11.50	0.063	1.60	0.669	17.00	0.276	7.00	0.610	15.50	1	5000	
15511B	—	0.469	11.90	0.047	1.20	0.689	17.50	0.280	7.10	0.626	15.90	1	10000	
10502B	15157B	0.500	12.70	0.063	1.60	0.736	18.70	0.220	5.60	0.610	15.50	1	5000	
11321B	15158B	0.587	14.90	0.051	1.30	0.787	20.00	0.276	7.00	0.724	18.40	1	10000	
10213B	15159B	0.610	15.50	0.063	1.60	0.866	22.00	0.295	7.50	0.748	19.00	1	5000	
40043B	—	0.625	15.90	0.063	1.60	0.748	19.00	0.280	7.10	0.748	19.00	1	10000	
12914B	—	0.642	16.30	0.051	1.30	0.787	20.00	0.276	7.00	0.728	18.50	1	5000	
10678B	15160B	0.750	19.00	0.063	1.60	0.984	25.00	0.256	6.50	0.846	21.50	1	5000	
10499A	15161B	0.781	20.00	0.063	1.60	0.984	25.00	0.256	6.50	0.846	21.50	1	5000	
11152B	15162B	0.866	22.00	0.094	2.40	1.122	28.50	0.323	8.20	1.047	26.60	1	3000	
19092B	—	0.875	22.50	0.063	1.60	1.122	28.50	0.295	7.50	1.063	27.00	1	3000	
11027B	15164B	0.968	24.50	0.094	2.40	1.181	30.00	0.343	8.70	1.083	27.50	1	2000	
11323B	—	0.984	25.00	0.031	0.80	1.516	38.50	0.181	4.60	1.122	28.50	1	3000	
10705B	15166B	1.000	25.40	0.063	1.60	1.260	32.00	0.354	9.00	1.114	28.30	1	3000	
11148B	15165B	1.000	25.40	0.094	2.40	1.260	32.00	0.354	9.00	1.114	28.30	1	3000	
11239B	—	1.250	31.50	0.031	0.80	1.504	38.20	0.276	7.00	1.240	31.50	1	2000	
11059B	15168B	1.250	31.50	0.063	1.60	1.504	38.20	0.295	7.50	1.394	35.40	1	2000	
11281B	15170B	1.260	32.00	0.122	3.10	1.504	38.20	0.354	9.00	1.394	35.40	1	2000	
10877B	15171B	1.500	38.20	0.063	1.60	1.720	43.70	0.323	8.20	1.693	43.00	1	1500	
10320B	15172B	2.031	51.50	0.063	1.60	2.264	57.50	0.488	12.40	2.071	52.60	1	500	

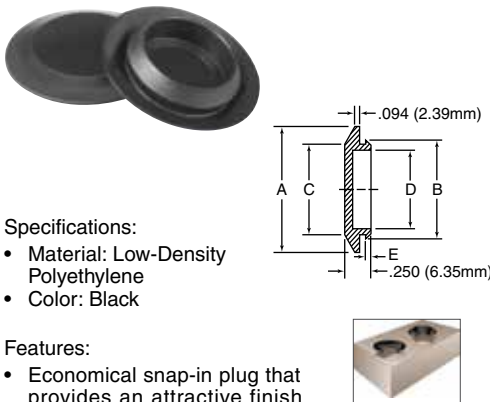
Specifications:

- Materials: PVC or TPR
- Color: Black

Features:

- PVC material: Non-staining; resistant to ozone, acids, and sunlight; with excellent aging qualities
- TPR Material: Very resistant to oils, acids and alkalis; resistant temperatures (up to 350°F, 176°C short term)

S Sheet Metal Plug



Item No.	Hole Size	Max Metal Thickness		A		B		C		D		E		Pack Qty.	Bulk Pack Qty.
		In	mm	In	mm	In	mm	In	mm	In	mm	In	mm		
S1/4A	0.250	0.110	2.8	0.500	12.7	0.280	7.1	0.250	6.4	0.188	4.8	0.250	6.4	1	5000
SM3/8A	0.375	0.065	1.7	0.740	18.8	0.400	10.2	0.370	9.4	0.240	6.1	0.250	6.4	1	5000
S3/8A	0.375	0.110	2.8	0.730	18.5	0.412	10.5	0.370	9.4	0.270	6.9	0.110	2.8	1	5000
S7/16A	0.438	0.110	2.8	0.688	17.5	0.471	12.0	0.438	11.1	0.375	9.5	0.250	6.4	1	6000
S1/2A	0.500	0.075	1.9	0.875	22.2	0.570	14.5	0.510	13.0	0.375	9.5	0.115	2.9	1	6000
S9/16A	0.563	0.110	2.8	0.813	20.6	0.600	15.2	0.563	14.3	0.500	12.7	0.250	6.4	1	6000
S5/8A	0.625	0.075	1.9	0.813	20.7	0.670	17.0	0.620	15.8	0.540	13.7	0.100	2.5	1	6000
SM1/16A	0.688	0.110	2.8	1.000	25.4	0.720	18.3	0.688	17.5	0.925	23.5	0.250	6.4	1	5000
SM3/4A	0.750	0.094	2.4	1.120	28.5	0.810	20.6	0.760	19.3	0.610	15.5	0.250	6.4	1	5000
S3/4A	0.750	0.110	2.8	1.125	28.6	0.790	20.1	0.760	19.3	0.623	15.8	0.115	2.9	1	6500
S13/16A	0.813	0.110	2.8	1.125	28.6	0.845	21.5	0.813	20.7	0.750	19.1	0.250	6.4	1	5000
S7/8A	0.875	0.110	2.8	1.250	31.8	0.900	22.9	0.870	22.1	0.745	18.9	0.094	2.4	1	5000
S15/16A	0.937	0.111	2.8	1.251	31.8	0.980	24.9	0.937	23.8	0.875	22.2	0.250	6.4	1	5000
S1A	1.000	0.110	2.8	1.438	36.5	1.040	26.4	1.010	25.7	0.875	22.2	0.110	2.8	1	3500
S1-3/32A	1.094	0.110	2.8	1.375	34.9	1.150	29.2	1.094	27.8	1.031	26.2	0.250	6.4	1	4000
S1-1/8A	1.125	0.110	2.8	1.500	38.1	1.180	30.0	1.125	28.6	1.063	27.0	0.250	6.4	1	3000
S1-5/16A	1.313	0.110	2.8	1.688	42.9	1.360	34.5	1.313	33.4	1.250	31.8	0.250	6.4	1	2500
S1-1/2A	1.500	0.110	2.8	1.875	47.6	1.540	39.1	1.500	38.1	1.400	35.6	0.110	2.8	1	2000
S1-3/4A	1.750	0.110	2.8	2.130	54.1	1.835	46.6	1.730	43.9	1.610	40.9	0.105	2.7	1	1500
S2A	2.000	0.110	2.8	2.375	60.3	2.060	52.3	2.000	50.8	1.988	49.2	0.250	6.4	1	1000
S2-1/8A	2.125	0.110	2.8	2.500	63.5	2.175	55.3	2.125	54.0	2.063	52.4	0.250	6.4	1	1000
S2-1/2A	2.500	0.110	2.8	3.000	76.2	2.560	65.0	2.500	63.5	2.438	61.9	0.250	6.4	1	700
S2-5/8A	2.625	0.110	2.8	3.125	79.4	2.685	68.2	2.625	66.7	2.563	65.1	0.250	6.4	1	1200
S3A	3.000	0.110	2.8	3.375	85.7	3.060	77.7	3.000	76.2	2.938	74.6	0.250	6.4		