



- 1 IN-Panel**
- Control Panels
  - Electrical Panels
  - Motor Control Centre

- 2 IN-Field**
- On the Machine
  - In the Process Area or Outdoors

- 3 IN-Route**
- Industrial Pathways
  - Network Zone Enclosure

- 4 IN-Room**
- Control Room
  - Data Centre
  - Telco Closet

- 5 IN-Frastructure**
- Power Distribution
  - Lighting
  - HVAC
  - Security
  - Safety

# Featured *IN*-Panel and *IN*-Field Products

UL & CSA Listed Compression Power Connectors for Code and Flex Conductors: Available in a broad range of styles and sizes. **LEGEND: 1**



UL and CSA Listed Universal Ground Bar: UGB2/0-414-6; UGB2/0-414-12; UGB2/0-414-18. **LEGEND: 2**



Semiautomatic Ferrule Crimping Tool: CT-1000. Wire cutting, stripping, ferrule termination and dispensing all in one tool for quick and easy installation. **LEGEND: 4**



New Lithium-Ion Battery Powered Crimping Tool: Part No. CT-3001. Provides up to 98% more crimps per charge and up to 26% faster cycle time. **LEGEND: 1**



Spiral Wrap: T50F-C. Provides abrasion protection to hoses/cables while harnessing multiple hoses/cables into a single manageable bundle. **LEGEND: 2**



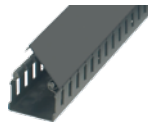
Control Panel Switch Cable Tie Mount: CPM122S-C; CPM875S-C (use with) PLT2S-C. Provides strain relief behind control panel buttons. **LEGEND: 4**



Terminals and Ferrules: Designed and manufactured for fast assembly and superior performance. Terminals also available in bottles and convenience packs. **LEGEND: 1, 4, 5**



Hinged Cover Wiring Duct: H3X3WH6; HC3WH6; H3X3BL6; HC3BL6. Easy access allowing simple wiring changes to be made up to 20% faster. **LEGEND: 2, 3**



Pan-Wrap™ Split Harness Wrap: PW50F-T. Patented slot pattern provides improved flexibility and cable abrasion protection with reduced installation time. **LEGEND: 4**



Contour Crimp Controlled Cycle Tool: CT-1550. Ergonomically designed. **LEGEND: 1**



**NEW!** PanelMax™ DIN Rail Wiring Duct: DRD33LG6. Up to 30% space savings vs. conventional duct/rail layouts. **LEGEND: 3**



Adhesive Backed Mounts: Premium adhesive for a long-term, reliable bond; adhesive backing allows routing of wires and cables where mounted holes cannot be drilled. **LEGEND: 4**



Miniature Circuit Breaker Lockout Devices: PSL-MCB; PCL-MCBNT. No-tool option quickly locks out miniature circuit breakers without the use of a tool. **LEGEND: 1**



PanelMax™ Corner Wiring Duct: CWD3LG6. Up to 20% space savings in layouts with side and back panels. **LEGEND: 3**



ARC Flash and Safety Labels: PVS0305W2201Y; PVS0305W2102Y. Pre-printed and blank labels. **LEGEND: 4**



Plenum Rated Hook and Loop Cable Ties: HLTP2I-X12; HLTP2I-X0. Delivers reliability by protecting against over-tensioning high performance cables. **LEGEND: 1**



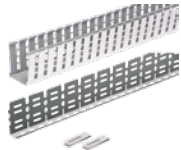
Dynamic Cable Manager: ABDCM30-A-C; ABDCM30-A-E; (use with) PLT2S-C. Provides strain relief at the hinge of control panel door to extend service life. **LEGEND: 3**



Pan-Ty™ and Barb Ty Cable Ties: PLT2S-C0; BT2S-C0. Broad selection of cable tie sizes, materials and colours available. **LEGEND: 5**



**NEW!** PanelMax™ Shielding Wiring Duct and Noise Shield: G2X2LG6EMI; SD2EMI. Provides up to 20dB noise reduction (equal to six inches of air space). **LEGEND: 2,3**



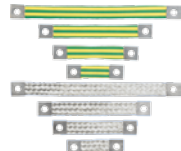
Cable Tie Tool: GTH; GTS. Ergonomic design to ease installation and reduce fatigue; provides flush cut-off and speeds installation to lower installed cost. **LEGEND: 3, 5**



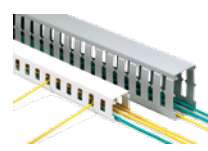
Slotted Grommet Edging - Nylon: GEE71N-C. Up to 149°F (65°C) operating temperature. **LEGEND: 5**



cULus Listed Braided Bonding Straps: BS100445; BS100445U; BS201246EU. **LEGEND: 2**



Halogen Wiring Duct. NNC50X75LG2. Up to 203°F (95°C) operating temperature. **LEGEND: 3**



Pan-Steel® Metal Locking Ties: MLT4EH-LP316; MLT4H-LP316; MLT4SH-LP316. AISI 316 stainless steel for the most corrosive environments. **LEGEND: 5**



**electro sonic**

For a complete product listing, call 1.800.56.SONIC

**1. ENHANCED RELIABLE CONNECTIONS**  
Regulatory Compliant: UL 310, UL486-486B, UL 508A; Design Flexibility: Broad Selection of termination solutions for code and flex conductors.

**2. REDUCE EFFECTS OF EMI**  
Bonding/Grounding for Electrical Systems  
Segregation and Shielding  
Avoidance through Robust Design Practices

**3. INCREASE CONTROL PANEL SPACE SAVINGS**  
Space Optimization  
Noise Mitigation  
Identify Hazards

**4. AVOID STRAY WIRES IN TROUBLESOME HIGH DENSITY TERMINAL BLOCKS**  
High Quality Connections  
Cost Effective Installations

**5. FOR TOUGH APPLICATIONS**  
Protect Your Connections  
Increase Productivity  
Ease of Use

**PANDUIT®**

**LEGEND**