



## Outlet Offering for EMEA

## Workstation Roadmap

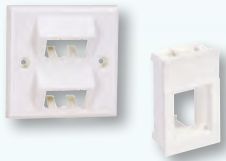
Panduit offers the most comprehensive selection of communication outlets to extend your copper, audio/video and fibre cabling system to the work area. From a standard work station configuration to a MuTOA application, Panduit has a solution to support your requirements.

- Modular, accepting all Mini-Com™ Modules for copper, fibre and audio/video applications
- Superior design provides lower profile, higher density outlet products, creating a cost-effective solution for easy moves, adds and changes
- Aesthetically pleasing solution to complement all types of work areas
- Ultimate ID™ components are part of a complete system for identification designed to efficiently support ANSI/TIA-606-B standard labelling requirements

Work area outlets products are easily installed and provide a broad range of solutions. Outlets solutions consist of a variety of faceplate and adapter styles and port densities.

### UK Selections

Page 4



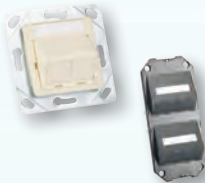
### France Selections

Page 5



### Germany Selections

Page 6



### Italy Selections

Page 7







## Denmark and Switzerland Selections

### Adapters for Galea and Valena Faceplates

Page 8



## Elko Faceplate

### One-Position Adapters and Inserts

Page 9



## Modular Furniture Faceplates

### Surface Mount Boxes

Page 10



## Labelling and Identification

Page 11

## Printers

### Icons

Page 12

## UK Selections



**CBUK\*\*Y**



**CBUK\*\*-2GY**



**CFPUKS2S\*\*Y**



**CFPUKS4SAW-2GY**



**CFPL86S2S\*\*S**



**CFPUKS2B\*\*Y**



**CFPUKS3\*\*Y**



**CFP86S2\*\*Y**



**CFP86S4\*\*Y**



**CFPLUKF2SAW**



**CFPLUKF4SAW**



**CM6CAW-X**



**CM6CSAW-X**



**CM6CSSAW-X**



**CM6CESAW-X**



**CM6CESSAW-X**

Part Number	Description	Colour**	Label Type <sup>^</sup>
<b>Faceplate Frames</b>			
<b>CBUKAWY</b>	86mm x 86mm, single gang faceplate frame with label. Accepts one 1/2-size module insert***.	Arctic White	C
<b>CBUKAW-2GY</b>	86mm x 146mm, double gang faceplate frame with labels. Accepts two 1/2-size module inserts***.	Arctic White	C

<b>Sloped Shuttered Faceplate Kits</b>			
<b>CFPUKS2SAWY</b>	86mm x 86mm single gang faceplate frame and one 1/2-size sloped shuttered module insert.	Arctic White	C
<b>CFPUKS4SAW-2GY</b>	86mm x 146mm double gang faceplate frame and two 1/2-size sloped shuttered module inserts.	Arctic White	C
<b>CFPL86S2SIGS</b>	86mm x 86mm single gang stainless steel two-piece faceplate frame includes two-position sloped shuttered adapter with labels and icon slots.	International Gray	C

<b>Sloped Faceplate</b>			
<b>CFPUKS2BAWY</b>	86mm x 86mm single gang faceplate holds up to two Mini-Com™ Modules. Supplied with CMB blank module.	Arctic White	F
<b>CFPUKS3AWY</b>	86mm x 86mm single gang faceplate holds up to three Mini-Com™ Modules.	Arctic White	F
<b>CFP86S2AWY</b>	86mm x 86mm single gang sloped faceplate with screw cover. Accepts two Mini-Com™ Modules.	Arctic White	F
<b>CFP86S4AWY</b>	86mm x 86mm single gang sloped faceplate with screw cover. Accepts four Mini-Com™ Modules.	Arctic White	F

<b>Flat Shuttered Faceplates</b>			
<b>CFPLUKF2SAW</b>	Single gang, 86mm x 86mm shuttered faceplate with label and icon slots. Accepts up to two Mini-Com™ Modules. Includes two M3.5-0.5x30mm panhead mounting screws.	Arctic White	C
<b>CFPLUKF4SAW</b>	Single gang, 86mm x 86mm shuttered faceplate with label and icon slots. Accepts up to four Mini-Com™ Modules. Includes two M3.5-0.5 x 30mm panhead mounting screws.	Arctic White	C

<b>Adapters</b>			
<b>CM6CAW-X</b>	Unshuttered module snaps into standard UK LJU6C floor box mounting plates, faceplates and patch panels and holds a single Mini-Com™ Module. Compatible with standard UK LJU6C openings with 22.3mm x 36.9mm dimensions.	Arctic White	G
<b>CM6CSAW-X</b>	Shuttered module snaps into standard UK LJU6C floor box mounting plates, faceplates and patch panels and holds a single Mini-Com™ Module. Compatible with standard UK LJU6C openings with 22.3mm x 36.9mm dimensions.	Arctic White	G
<b>CM6CSSAW-X</b>	Sloped, shuttered module snaps into standard UK LJU6C floor box mounting plates, faceplates and patch panels and holds a single Mini-Com™ Module. Compatible with standard UK LJU6C openings with 22.3mm x 36.9mm dimensions.	Arctic White	G
<b>CM6CESAW-X</b>	25mm x 50mm shuttered Euro-mod adapter accepts one Mini-Com™ Module.	Arctic White	G
<b>CM6CESSAW-X</b>	25mm x 50mm sloped, shuttered Euro-mod adapter accepts one Mini-Com™ Module.	Arctic White	G

\*\*Visit [www.panduit.com](http://www.panduit.com) or contact customer service for availability of other colours.

\*\*\*See page 9 for compatible 1/2-size inserts.

<sup>^</sup>See page 11 for compatible labels.

## France Selections



Part Number	Description	Colour**	Label Type^
<b>Faceplate Frames</b>			
<b>FAF80AW</b>	80mm x 80mm faceplate frame accepts 45mm x 45mm or 22.5mm x 45mm adapters which snap in and out of faceplate frame. Two-piece frame includes screw-mount base and snap-on faceplate that conceals screws. Base is compatible with standard DIN openings.	Arctic White	—
<b>Adapter Kits</b>			
<b>CFPFF2AW</b>	45mm x 45mm adapter with one 1/2-size flat module insert that accepts two Mini-Com™ Modules.	Arctic White	F
<b>CFPFS1SAW</b>	45mm x 45mm adapter with one 1/2-size sloped shuttered insert that accepts one Mini-Com™ Module.	Arctic White	G
<b>CFPFS2AW</b>	45mm x 45mm adapter with one 1/2-size sloped module insert that accepts up to two Mini-Com™ Modules.	Arctic White	F
<b>CFPFS2SAW</b>	45mm x 45mm adapter with one 1/2-size sloped shuttered module insert that accepts up to two Mini-Com™ Modules.	Arctic White	F
<b>CFP45LS2SAW</b>	45mm x 45mm adapter with one 1/2-size sloped shuttered module insert with label and label cover. Accepts up to two Mini-Com™ Modules.	Arctic White	D
<b>Adapters</b>			
<b>CBFAW</b>	45mm x 45mm adapter frame, accepts one 1/2-size module insert***.	Arctic White	—
<b>CFPFLS1SAW</b>	45mm x 45mm adapter with one-port sloped shuttered module with labels and icon slots. Accepts a single Mini-Com™ Module.	Arctic White	C
<b>CFPFLS2SAW</b>	45mm x 45mm adapter with two-port sloped shuttered module with labels and icon slots. Accepts up to two Mini-Com™ Modules.	Arctic White	C
<b>CFA1FSAW-X</b>	22.5mm x 45mm flat shuttered adapter. Accepts a single Mini-Com™ Module.	Arctic White	E

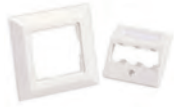
\*\*Visit [www.panduit.com](http://www.panduit.com) or contact customer service for availability of other colours.

\*\*\*See page 9 for compatible 1/2-size inserts.

^See page 11 for compatible labels.



## Germany Selections



CFPE3\*\*Y



CFPAGF2\*\*Y



CFPAGS2\*\*Y



CFPAGS2S\*\*Y



FCFP\*\*



CBAG\*\*Y



CHES2\*\*Y



CHES2S\*\*Y



CHES3\*\*Y



CFPGFB3BL



CFPGAS3SBL



CFPGAS6SBL



CFPGAS9SBL

Part Number	Description	Colour**	Label Type^
<b>Faceplates</b>			
CFPE3AWY	80mm x 80mm faceplate frame and one 55mm x 55mm sloped faceplate. Accepts up to three Mini-Com™ Modules. Supplied with mounting screws, metal mounting plate, label, and label cover.	Arctic White	C
CFPAGF2AWY	50mm x 50mm adapter and one 1/2-size flat module insert that accepts up to two Mini-Com™ Modules. Supplied with mounting screws and metal mounting plate.	Arctic White	C
CFPAGS2AWY	50mm x 50mm adapter and one 1/2-size sloped module insert that accepts up to two Mini-Com™ Modules. Supplied with mounting screws and metal mounting plate.	Arctic White	C
CFPAGS2SAWY	50mm x 50mm adapter and one 1/2-size sloped shuttered module insert that accepts up to two Mini-Com™ Modules. Supplied with mounting screws and metal mounting plate.	Arctic White	C
FCFPAW	80mm x 80mm faceplate frame accepts all Panduit 50mm x 50mm adapters and the CHES3**Y adapter.	Arctic White	C
CBAGAWY	50mm x 50mm adapter for 1/2-size inserts. Includes label and label cover***. Supplied with mounting screws and metal mounting plate.	Arctic White	C
CHES2AWY	50mm x 50mm sloped faceplate holds up to two Mini-Com™ Modules. Supplied with mounting screws, metal mounting plate, label and label cover and icon slots.	Arctic White	C
CHES2SAWY	50mm x 50mm sloped shuttered faceplate holds up to two Mini-Com™ Modules. Supplied with mounting screws, metal mounting plate, label and label cover and icon slots.	Arctic White	C
CHES3AWY	55mm x 55mm sloped faceplate holds up to three Mini-Com™ Modules. Supplied with mounting screws, metal mounting plate, label and label cover.	Arctic White	C
CFPGFB3BL	Floor box sloped faceplate holds up to three Mini-Com™ Modules. Supplied with label and label cover. Compatible with a variety of German floor boxes.	Black	C
CFPGAS3SBL	Mini-Com™ 3-port sloped shuttered faceplate, mounts to Ackermann^ GB2 Sub Box. Includes label and label covers for each available port.	Black	A
CFPGAS6SBL	Mini-Com™ 6-port sloped shuttered faceplate. Mounts to Ackermann^ GB2 Sub Box. Includes label and label covers for each available port.	Black	A
CFPGAS9SBL	Mini-Com™ 9-port sloped shuttered faceplate, mounts to Ackermann^ GB3 Sub Box. Includes three labels and label covers to identify the nine available ports.	Black	A

\*\*Visit [www.panduit.com](http://www.panduit.com) or contact customer service for availability of other colours.

^Ackermann is a trademark of Novar PLC, Weybridge, Surrey, United Kingdom.

\*\*\*See page 9 for compatible 1/2-size inserts.

^^See page 11 for compatible labels.

## Italy Selections



CFPH2\*\*



CFPHS2\*\*



CFPH4\*\*



CFPHS4\*\*



UICFPH2\*\*



UICFPHSE2\*\*



UICFPH4\*\*



UICFPHSE4\*\*



CVIA1\*\*-X



CBTAL1BL-X



CBTA1BL-X



CBTAL1\*\*-X



CBTA1\*\*-X

Part Number	Description	Colour**	Label Type <sup>^</sup>
<b>Faceplates</b>			
CFPH2IW	Single gang, horizontal faceplate accepts two Mini-Com™ Modules.	Off White	F
CFPHS2IW	Single gang sloped horizontal faceplate accepts two Mini-Com™ Modules.	Off White	F
CFPH4IW	Single gang, horizontal faceplate accepts four Mini-Com™ Modules.	Off White	F
CFPHS4IW	Single gang sloped horizontal faceplate accepts four Mini-Com™ Modules. Includes label and label cover.	Off White	A
UICFPH2IW	Single gang horizontal Ultimate ID™ faceplate holds up to two Mini-Com™ Modules.	Off White	H
UICFPHSE2IW	Single gang, horizontal sloped Ultimate ID™ faceplate holds up to two Mini-Com™ Modules.	Off White	H
UICFPH4IW	Single gang horizontal Ultimate ID™ faceplate holds up to four Mini-Com™ Modules.	Off White	H
UICFPHSE4IW	Single gang, horizontal sloped Ultimate ID™ faceplate holds up to four Mini-Com™ Modules.	Off White	H

### Adapters

CVIA1GY-X	Adapter holds one Mini-Com™ Module in a Vimar <sup>^^</sup> IDEA Series Faceplate.	Grey	—
CBTAL1BL-X	Adapter with label pocket accepts one Mini-Com™ Module, for Bticino <sup>‡</sup> Living International series faceplates.	Black	E
CBTA1BL-X	Adapter accepts one Mini-Com™ Module, for Bticino <sup>‡</sup> Living International series faceplates.	Black	G
CBTAL1WH-X	Adapter with label pocket accepts one Mini-Com™ Module, for Bticino <sup>‡</sup> Light series faceplates.	White	E
CBTA1WH-X	Adapter accepts one Mini-Com™ Module, for Bticino <sup>‡</sup> Light series faceplates.	White	G

\*\*Visit [www.panduit.com](http://www.panduit.com) or contact customer service for availability of other colours.

<sup>^</sup>Gewiss is a registered trademark of Gewiss S.P.A. of Italy.

<sup>^^</sup>Vimar is a registered trademark of Vimar SPA.

<sup>‡</sup>Bticino is a registered trademark of Bticino S.P.A. of Italy.

\*\*\*See page 11 for compatible labels.

## Denmark Selections



CFPDS2EWY



CFPDS2S\*\*Y



CFPDPS2S\*\*



CHLKCLS2S\*\*



CFD66S2S\*\*

Part Number	Description	Colour**	Label Type <sup>^</sup>
<b>Faceplate Kits</b>			
CFPDS2EWY	Danish 77.1mm x 50.4mm faceplate with one 1/2-size sloped module insert. Holds up to two Mini-Com™ Modules. Supplied with label and label cover.	European White	C
CFPDS2SEWY	Danish 77.1mm x 50.4mm faceplate with one 1/2-size sloped shuttered module insert. Holds up to two Mini-Com™ Modules. Supplied with label and label cover.	European White	C
CFPDPS2SEW	Denmark faceplate with one 1/2-size sloped shuttered insert. Holds up to two Mini-Com™ Modules. Supplied with label and label cover.	European White	C
CHLKCLS2SEW	Mini-Com™ faceplate for use with LK Clic'Line <sup>^</sup> Series faceplate snaps to LK back box. Includes one 1/2-size sloped shuttered insert that holds up to two Mini-Com™ Modules.	European White	C

### Adapters

CFD66S2SEW	Mini-Com™ 2-position, sloped shuttered OPUS 66 <sup>^^</sup> adapter holds up to two Mini-Com™ Modules. Compatible with in-wall and surface mount installation.	European White	F
------------	---	----------------	---

\*\*Visit [www.panduit.com](http://www.panduit.com) or contact customer service for availability of other colours.

<sup>^</sup>Clic'Line is a trademark of Lauritz Knudsen A/S, Ballerup, Denmark.

<sup>^^</sup>Opus 66 is a trademark of Lauritz Knudsen A/S, Ballerup, Denmark.

\*\*\*See page 11 for compatible labels.

## Switzerland Selections



CFPCH3AW



CBCHAW

Part Number	Description	Colour**	Label Type <sup>^</sup>
<b>Faceplate</b>			
CFPCH3AW	37.5mm x 63mm faceplate holds up to three Mini-Com™ Modules.	Arctic White	G
<b>Faceplate Frame</b>			
CBCHAW	64mm diameter faceplate frame accepts one 1/2-size module insert***. For use with Feller <sup>^^</sup> trunking box.	Arctic White	—

\*\*Visit [www.panduit.com](http://www.panduit.com) or contact customer service for availability of other colours.

\*\*\*See page 9 for compatible 1/2-size inserts.

<sup>^</sup>See page 11 for compatible labels.

<sup>^^</sup>Feller AG operates as a subsidiary of Schneider Electric S.A.

## Adapter for Galea and Valena Faceplates



CGVA2BL

Part Number	Description	Colour**	Label Type <sup>^</sup>
CGVA2BL	Mini-Com™ 2-port adapter to fit Galea <sup>^</sup> and Valena <sup>^</sup> faceplates. Holds up to two Mini-Com™ Modules.	Black	—

\*\*Visit [www.panduit.com](http://www.panduit.com) or contact customer service for availability of other colours.

<sup>^</sup>Galea and Valena are trademarks of Legrand, Limoges, France.

\*\*\*See page 11 for compatible labels.



## Elko Faceplate



CES3AWY



CFPTS4AW



CFTSL4\*\*

Part Number	Description	Colour**	Label Type <sup>^</sup>
CES3AWY	Sloped faceplate holds up to three Mini-Com™ Modules. For use with Elko <sup>^</sup> faceplate frame. Includes back plate, label and label cover and mounting screws.	Arctic White	C

\*\*Visit [www.panduit.com](http://www.panduit.com) or contact customer service for availability of other colours.

<sup>^</sup>Elko is a trademark of ELKO AS, Sandvika, Norway.

<sup>^^</sup>See page 11 for compatible labels.

### For use with Thorsman Perimeter Trunking

CFPTS4AW	Sloped faceplate holds up to four Mini-Com™ Modules. For use with Thorsman <sup>^</sup> plastic trunking.	Arctic White	A
CFTSL4AW	Sloped faceplate holds up to four Mini-Com™ Modules. For use with Thorsman <sup>^</sup> plastic or metal trunking.	Arctic White	B

\*\*Visit [www.panduit.com](http://www.panduit.com) or contact customer service for availability of other colours.

<sup>^</sup>Thorsman is a division of Schneider Electric.

<sup>^^</sup>See page 11 for compatible labels.

## One-Position Adapters



CMNZA\*\*-X



CMAA1\*\*-X



CAFPA\*\*-X



CADIN1\*\*

Part Number	Description	Colour**	Label Type <sup>^</sup>
CMNZABL-X	Adapter snaps into 21mm x 21mm opening and accepts one Mini-Com™ Module. For snug fit, panel thickness should be 1.17mm to 1.42mm.	Black	—
CMAA1WH-X	Adapter snaps into 25mm x 25mm opening and accepts one Mini-Com™ Module. For snug fit, panel thickness should be 1.5mm to 2.0mm***.	White	—
CAFPAIW-X	Faceplate adapter mounts into a Clipsal <sup>^</sup> or HPM <sup>^</sup> faceplate opening and accepts single-space Mini-Com™ Modules. Not compatible with shuttered modules.	Off White	—
CADIN1IW	Mini-Com™ DIN Rail Mount Adapter mounts to standard 35mm DIN rail and accepts any single port Mini-Com™ Module. Includes a label and label cover.	Off White	D

\*\*Visit [www.panduit.com](http://www.panduit.com) or contact customer service for availability of other colours.

<sup>^</sup>Clipsal is a registered trademark of Clipsal Australia Pty Ltd.; HPM is a registered trademark of HPM Pty Ltd. of Australia.

\*\*\*Can be used with Electraplan faceplate, MP09M2.

<sup>^^</sup>See page 11 for compatible labels.

## Inserts



CHS2\*\*-X



CHS2S\*\*-X



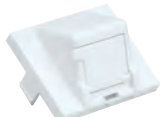
CHLS2S\*\*-X



CHF2\*\*-X



CHSRE2\*\*-X



CHS1S\*\*-X



CHB2\*\*-X

Part Number	Description	Colour**	Label Type <sup>^</sup>
CHS2IW-X	Two module space, 1/2-size, sloped insert accepts two Mini-Com™ Modules.	Off White	F
CHS2SIW-X	Two module space, 1/2-size, sloped shuttered insert accepts two Mini-Com™ Modules. Not suitable for use with any audio/video or fibre connector module that protrudes beyond the face of the insert.	Off White	F
CHLS2SIW-X	Two module space, 1/2-size, sloped shuttered insert accepts two Mini-Com™ Modules. Not suitable for use with any audio/video or fibre connector module that protrudes beyond the face of the insert. Supplied with label and label cover.	Off White	D
CHF2IW-X	Two module space, 1/2-size flat insert accepts two Mini-Com™ Modules.	Off White	F
CHSRE2IW-X	Two module space, 1/2-size, 30° sloped recessed insert accepts two Mini-Com™ Modules.	Off White	F
CHS1SIW-X	One module space, 1/2-size, sloped shuttered insert accepts one Mini-Com™ Module. Not suitable for use with any audio/video or fibre connector module that protrudes beyond the face of the insert.	Off White	F
CHB2IW-X	1/2 blank insert. Reserves space for future upgrades.	Off White	—

\*\*Visit [www.panduit.com](http://www.panduit.com) or contact customer service for availability of other colours.

<sup>^</sup>See page 11 for compatible labels.

## Modular Furniture Faceplates



CFFP4\*\*



CFFPL4\*\*



CFFPLA4\*\*



CFFPA2\*\*



CFFPE3BL



UICFFP4\*\*



MFFPE\*\*



CFFPHM4\*\*



CFFPEBSL4\*\*



CFFPKE3BL

Part Number	Description	Colour**	Label Type <sup>^</sup>
CFFP4BL	Faceplate snaps into industry standard knockouts found on modular furniture. Accepts up to four Mini-Com™ Modules.	Black	F
CFFPL4BL	Faceplate snaps into industry standard knockouts found on modular furniture. Accepts up to four Mini-Com™ Modules. Supplied with write-on label and label cover.	Black	B
CFFPLA4BL	Angled faceplate snaps into industry standard knockouts found on modular furniture. Accepts up to four Mini-Com™ Modules. Supplied with write-on label and label cover.	Black	B
CFFPA2BL	Angled faceplate snaps into industry standard knockouts found on modular furniture. Accepts up to two Mini-Com™ Modules.	Black	F
CFFPE3BL	Faceplate snaps into knockouts found on Knoll Morrison <sup>^</sup> furniture, as well as industry standard knockouts. Accepts up to three Mini-Com™ Modules.	Black	G
UICFFP4BL	Ultimate ID™ Faceplate snaps into standard knockouts found on modular furniture. Holds up to four Mini-Com™ Modules.	Black	H
MFFPEBL	Faceplate extender for use when depth inside modular furniture base is limited. Extends plate approximately 12.7mm. Accepts CFFPL4 and CFFP4 modular faceplates.	Black	—
CFFPHM4BL	Faceplate snaps into knockouts found on Herman Miller <sup>^</sup> furniture such as Action Office Series 2 and 3 and Ethospace Baseline. Accepts up to four Mini-Com™ Modules.	Black	F
CFFPEBSL4BL	Sloped faceplate snaps into knockouts found on Herman Miller <sup>^</sup> furniture such as Ethospace Beltline. Accepts up to four Mini-Com™ Modules. Supplied with write-on label and label cover and icon slots.	Black	B
CFFPKE3BL	Faceplate snaps into knockouts found on Knoll Equity <sup>^</sup> furniture. Accepts up to three Mini-Com™ Modules.	Black	G

\*\*Visit [www.panduit.com](http://www.panduit.com) or contact customer service for availability of other colours.

<sup>^</sup>HERMAN MILLER is a trademark of Herman Miller, Inc., Zeeland, MI. KNOLL, MORRISON and EQUITY are trademarks of Knoll, Inc.

<sup>^</sup>See page 11 for compatible labels.

## Surface Mount Boxes



CBXQ1\*\*-A



CBXQ2\*\*-A



CBXQ4\*\*-A



CBXQ6\*\*-A

Part Number	Description	Colour**	Label Type <sup>^</sup>
<b>Shuttered*</b>			
CBXQ1AW-A	1-port surface mount box with quick release cover and adhesive. Dimensions: 24.8mmH x 37.5mmW x 66.0mmH	Arctic White	G
CBXQ2AW-A	2-port surface mount box with quick release cover and adhesive. Dimensions: 24.8mmH x 53.4mmW x 66.0mmH	Arctic White	C
CBXQ4AW-A	4-port surface mount box with quick release cover and adhesive. Dimensions: 30.0mmH x 95.3mmW x 30.0mmH	Arctic White	A
CBXQ6AW-A	6-port surface mount box with quick release cover and adhesive. Dimensions: 30.5mmH x 129.0mmW x 30.5mmH	Arctic White	A

\*Shuttered feature achieved by installing jack modules with spring shuttered door

## Surface Mount Boxes (continued)



Part Number	Description	Colour**	Label Type <sup>^</sup>
<b>Non-Shuttered</b>			
CBX1AW-A	Mini-Com™ 1-port low profile surface mount box accepts a single Mini-Com™ Module. Dimensions: 22.8mmH x 26.3mmW x 48.1mmL.	Arctic White	G
CBX2AW-AY	Mini-Com™ surface mount box accepts up to two Mini-Com™ Modules. Includes built-in removable blank to add a second module. Dimensions: 27.0mmH x 49.5mmW x 92.7mmL.	Arctic White	F
CBX4AW-AY	Mini-Com™ surface mount box accepts four Mini-Com™ Modules. Provides slots that accept cable ties for strain relief. Supplied with label holder/screw cover. Dimensions: 27.0mmH x 73.6mmW x 114.3mmL.	Arctic White	A
<b>Multimedia</b>			
CBXF6AW-AY	Mini-Com™ surface mount box accepts up to six Mini-Com™ Modules. Includes built-in fibre spool that stores up to 24 metres of buffered fibre optic cable. Icon slots available for optional icons. Dimensions: 25.0mmH x 119.4mmW x 169.2mmL.	Arctic White	A
CBXF12AW-AY	Mini-Com™ surface mount box accepts up to 12 Mini-Com™ Modules. Includes built-in fibre spool that stores up to 24 metres of buffered fibre optic cable. Dimensions: 45.8mmH x 119.4mmW x 169.2mmL.	Arctic White	A

\*\*Visit [www.panduit.com](http://www.panduit.com) or contact customer service for availability of other colours.  
<sup>^</sup>See page 11 for compatible labels.

## Labeling and Identification

A full line of labelling products, software and printers is available to assist with standards-compliant labelling within your enterprise. Identification solutions comply with ANSI/TIA-606-B and ISO/IEC 14763-2 standards. These standards specify the format of identifiers that are required for data center and telecommunications room components, all the way to the desktop.

Maintaining standards-compliant labelling allows moves, adds, changes, trouble-shooting and repairs to be accomplished faster and more efficiently, to lower the total cost of ownership.

## Label Chart

Label Type	Individual labels with covers	Laser/Ink Jet Desktop Printer label	TDP43ME Thermal Transfer Desktop Printer label	PanTher™ LS8E Hand-Held Printer label
A	CSGLLC-L	C195X040Y1J	C195X040Y1T	C195X040Y1C
B	C4PPLK	C261X035Y1J	C261X035Y1T	C261X035Y1C
C	RL505BK-X	C150X030Y1J	C150X030Y1T	C150X030Y1C
D	—	—	—	UILS8BW
E	—	—	C195X040Y1T	—
F	—	C125X030FJJ*	C125X0300YPT, T031X000FJT‡	C125X030FJC*, T031X000FJC-BK
G	—	C061X030FJJ*	T031X000FJT‡	C061X030FJC*, T031X000FJC-BK
H	—	UILJ1, UILJ2, UILJ3, UILJ4, UILJ6, UILJCOMBO <sup>^</sup>	—	UILS8BW <sup>^</sup>
I	—	C252X030FJJ	C252X030YPT	C252X030FJC

‡Adhesive or non-adhesive use (for non-adhesive labelling solution, do not remove liner from label).

\*Adhesive use only.

<sup>^</sup>Includes Ultimate ID Software.



## Printers



TDP43ME/E



TDP43ME/E-KIT



LS8EQ-KIT-ACE



LS8EQ



LS8E-KIT-ACE



LS8E

Label Type	Part Description
TDP43ME/E	300 dpi printer; includes printer, Panduit™ Easy-Mark™ Labeling Software, RMEH4BL hybrid black ribbon, USB cable, user manual, quick start card, driver disk, and the following power cords: EuroPlug, Swiss, UK, and Japan JIS 8303 3-pin; for use outside North America.
TDP43ME/E-KIT	TDP43ME/E printer kit. Includes: printer, Panduit™ Easy-Mark™ Labeling Software, RMEH4BL hybrid black ribbon, AC power adapter with EuroPlug cord, USB cable, user manual, quick start card, TDP43ME-RS Roll Stand, TDP43ME-CASE, one roll of S100X150VATY labels, and driver disk.
LS8EQ-KIT-ACE	Includes LS8EQ printer with QWERTY keypad, one cassette of S100X150VAC self-laminating labels, six AA alkaline batteries, LS8-CASE, LS8-PCKIT, LS8-IB, LS8-WS, quick reference card, and operator's manual. Includes AC power adapter for Europe.
LS8EQ	Includes LS8EQ printer with QWERTY keypad, one cassette of S100X150VAC self-laminating labels, six AA alkaline batteries, and quick reference card.
LS8E-KIT-ACE	Includes LS8E printer, one cassette of S100X150VAC self-laminating labels, six AA alkaline batteries, LS8-CASE, LS8-PCKIT, LS8-IB, LS8-WS, quick reference card, and operator's manual. Includes AC power adapter for Europe.
LS8E	Includes LS8E printer, one cassette of S100X150VAC self-laminating labels, six AA alkaline batteries, and quick reference card.
LS8E-ACE	100-240V AC power adapter for Europe for use with LS8E and LS8EQ printers.

## Icons



Label Type	Part Description	Colour**
CIDAW-C	Plastic snap-in icon with data image.	Arctic White
CIPAW-C	Plastic snap-in icon with phone image.	Arctic White

\*\*Visit [www.panduit.com](http://www.panduit.com) or contact customer service for availability of other colours.

# PANDUIT™

Panduit Corp.  
World Headquarters  
Tinley Park, IL 60487

800.777.3300

[www.panduit.com](http://www.panduit.com)