

## Series CR Material Specifications

**Coating**  
Vitreous enamel

**Body**  
Ceramic

**Windings**  
High-grade resistance alloy

**Terminals**  
Welded and solder-coated

**Weight (lbs.)**

CR12.5...0.6 oz.	<del>CR150.....1.1</del>
CR25.....0.19	<del>CR225......2</del>
CR50.....0.32	<del>CR300.....2.6</del>
<del>CR75.....0.52</del>	<del>CR500.....4</del>
<del>CR100....0.64</del>	<del>CR1000...10</del>

## Series CR Electrical Specifications

**Resistance Tolerance**  
±10% standard  
Closer tolerances available.

**Voltage**  
High-strength ceramic hub insulates the shaft and bushing from all line parts. 25 watt to 150 watt models have the live parts insulated to ground to meet Underwriters' Laboratories 300 volt rating. 225 watt to 1000 watt models meet U.L.'s 600 volt rating. 12.5 watt model is not U.L. approved.

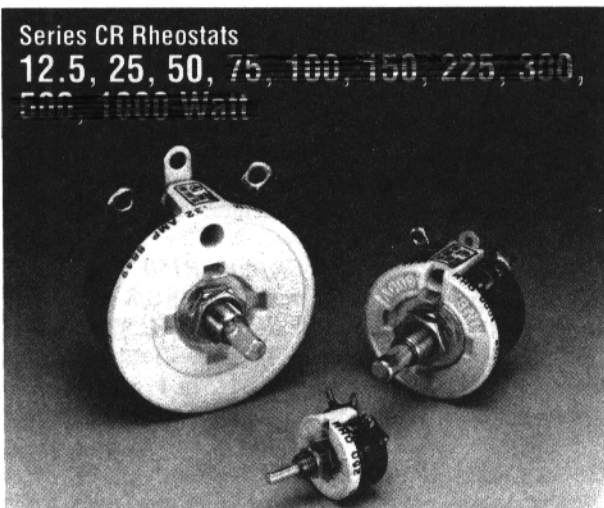
**Dielectric Withstanding Voltage**  
25 watt to 1000 watt models, 3000 Vac test to ground.

**Resistance Range (ohms)**

CR12.5...1-5000	<del>CR150.....1-10K</del>
CR25.....1-5000	<del>CR225.....1-2500</del>
CR50.....1-10K	<del>CR300....1-2500</del>
<del>CR75.....1-10K</del>	<del>CR500.....1-2500</del>
<del>CR100....1-10K</del>	<del>CR1000...1-2000</del>

## Series CR Rheostats

12.5, 25, 50, 75, 100, 150, 225, 300,  
500, 1000 Watt



### Description

The CR series of rheostats is ideal for use over long periods of time. The CR series is made in accordance to MIL-R-22 and most of this series is UL approved.

### Features

- Vitreous enamel bonds core and base
- Windings secured to prevent shifting
- Wiper tracks are buffed to assure smooth rotation and uniform contact
- Three terminals for potentiometer applications
- Minimum backlash

## Series CR Mechanical Specifications

### Shaft Torque (lbs. inches)

<del>CR150.....0.5 to 3.0</del>	<del>CR12.5...1.0 to 6.0</del>
<del>CR225.....2.5 to 4.0</del>	<del>CR25....0.25 to 0.5</del>
<del>CR300.....2.5 to 5.0</del>	<del>CR50....0.25 to 2.0</del>
<del>CR500.....4.5 to 7.0</del>	<del>CR75.....0.5 to 2.0</del>
<del>CR1000...3.5 to 7.0</del>	<del>CR100....0.5 to 2.0</del>

### Rotation (± 5%)

<del>CR12.5...300°</del>	<del>CR150.....300°</del>
<del>CR25.....300°</del>	<del>CR225....310°</del>
<del>CR50.....300°</del>	<del>CR300....370°</del>
<del>CR75.....300°</del>	<del>CR500....325°</del>
<del>CR100....300°</del>	<del>CR1000...335°</del>

## Standard Mounting

### Series CR12.5

Mounts to panels up to 1/8 in. (3.175 mm) thick with 1/4 in (6.35 mm) - 32 (6.35 mm) bushing and hex nut, locating pin requires 1/8 in. (3.175 mm) diameter hole, 1/4 in. (6.35 mm) below shaft center.

### Series CR25, CR50, CR75, CR100, CR150

Mounts to panels up to 1/4 in. thick with 3/8 in. (9.53 mm) - 32 bushing and hex nut, (CR150 can use 10 in. (254 mm) - 32 thread F.H. screws.) Locating pin requires .188 in. (4.78 mm) hole, 1/2 in. (12.7 mm) below center of shaft, CR150 has no locating pin.

### Series CR225, CR300, CR500, CR1000

Mounts to panels up to 1 1/4 in. (31.75 mm) thick with two 1/4 in. (6.35 mm) - 20 x 1 1/2 in. (38.1 mm) flat head screws. (included).

Figure 1

### CR 12-1/2 - 12.5 WATTS

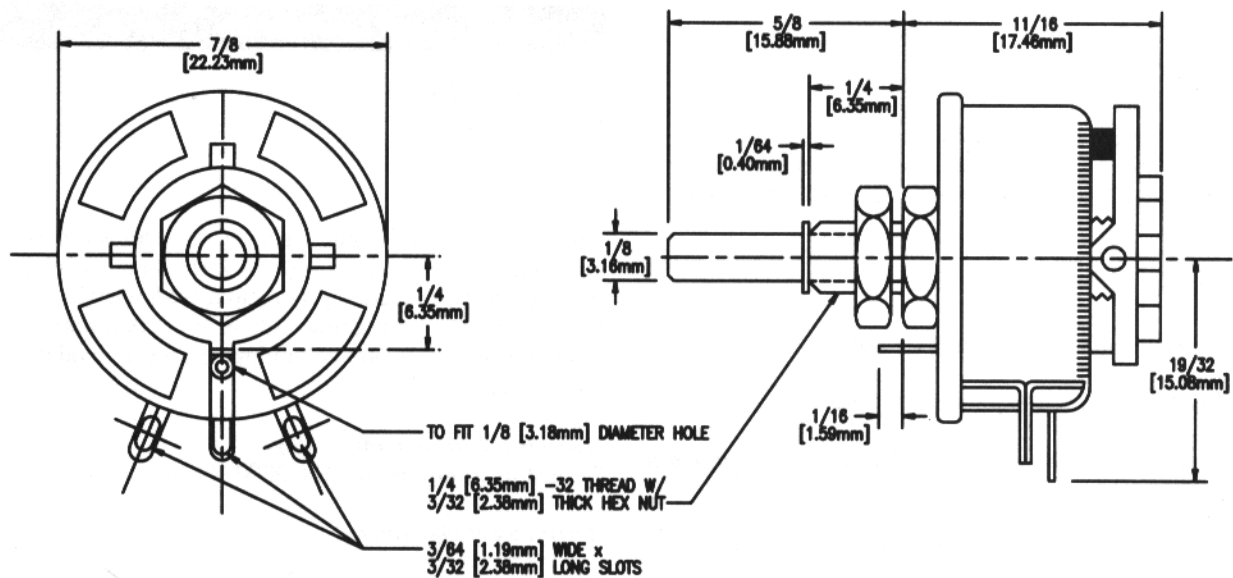


Figure 2

### CR25 - 25 WATTS

UL APPROVED

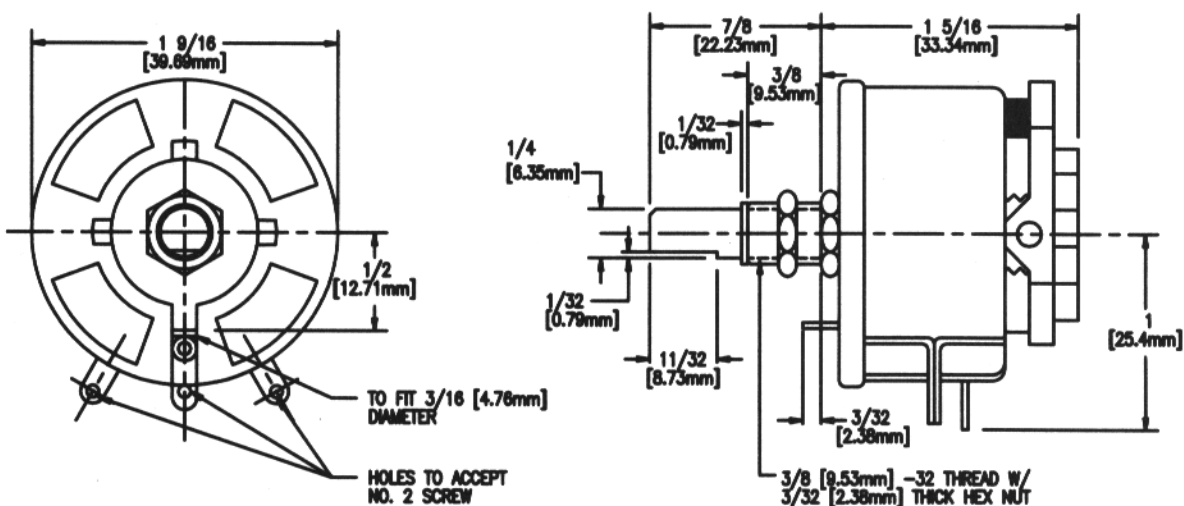


Figure 3

**CR50 - 50 WATTS**

UL APPROVED

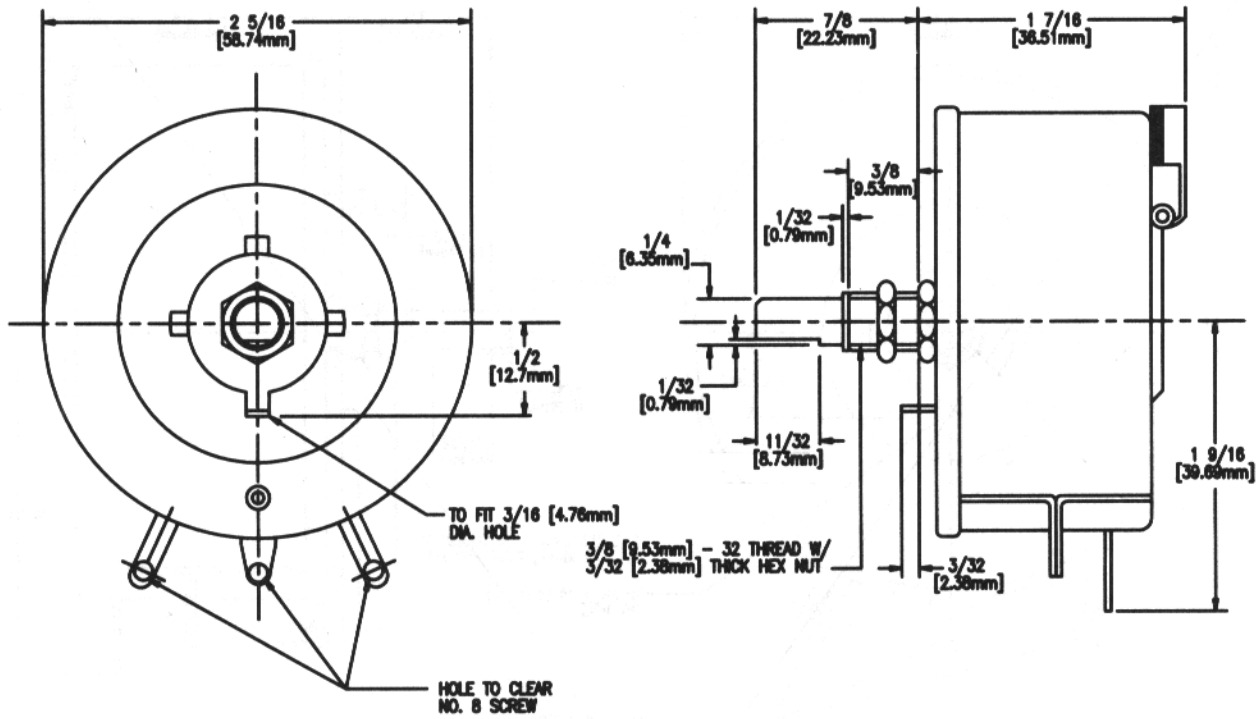


Figure 4

**CR75 - 75 WATTS**

UL APPROVED

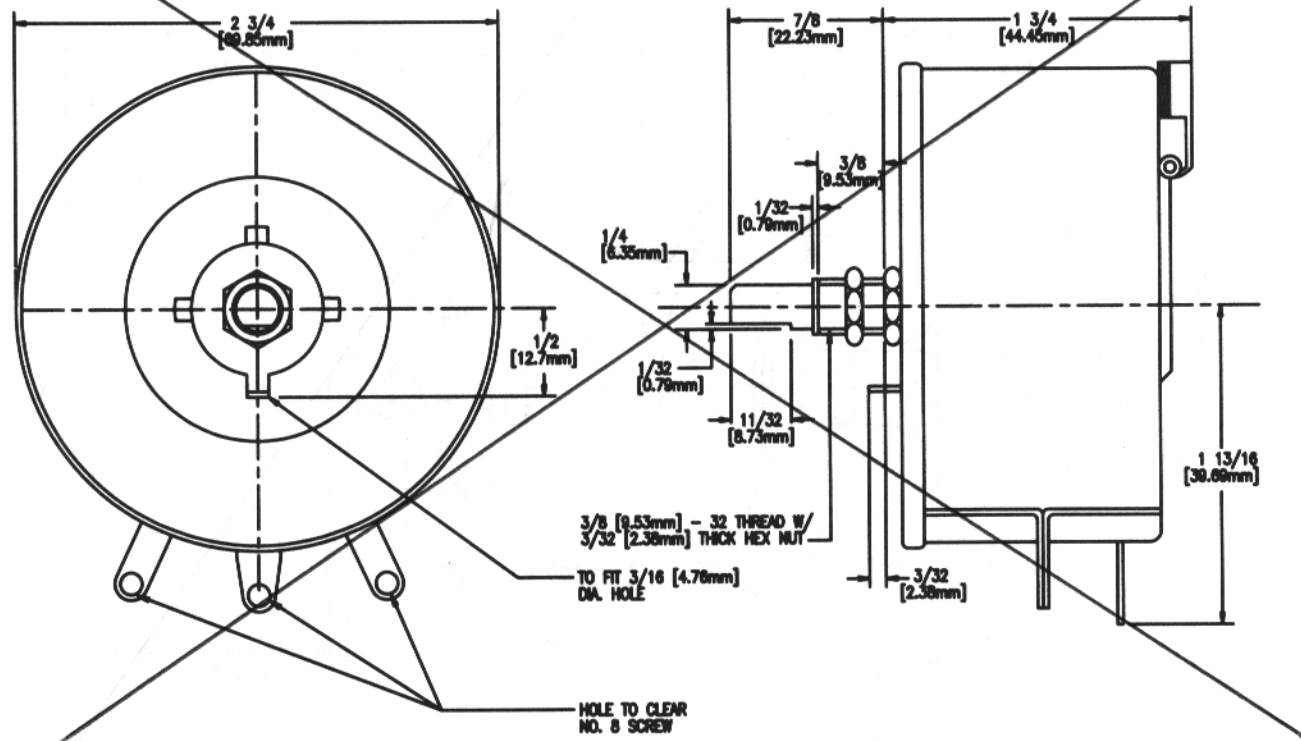


Figure 5

**CR100 - 100 WATTS**

UL APPROVED

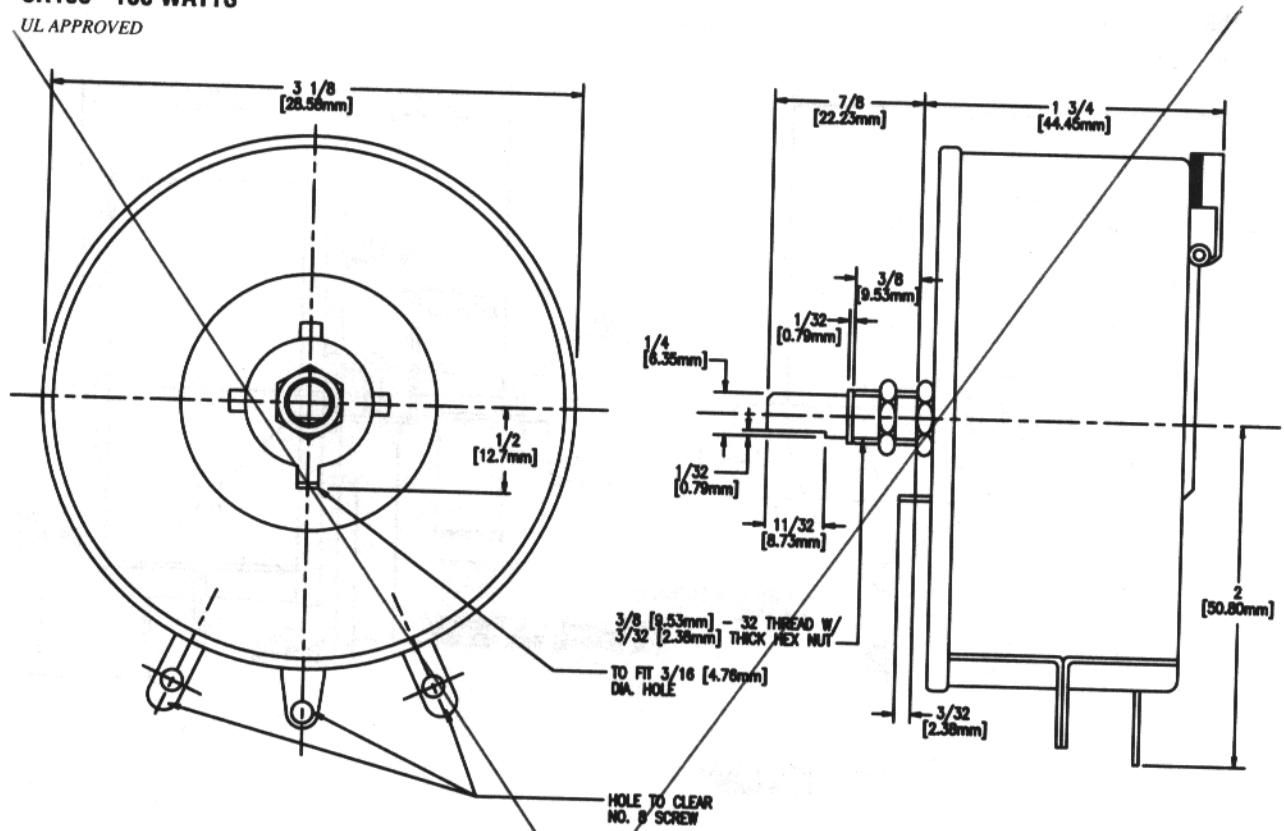


Figure 6

**CR150 - 150 WATTS**

UL APPROVED

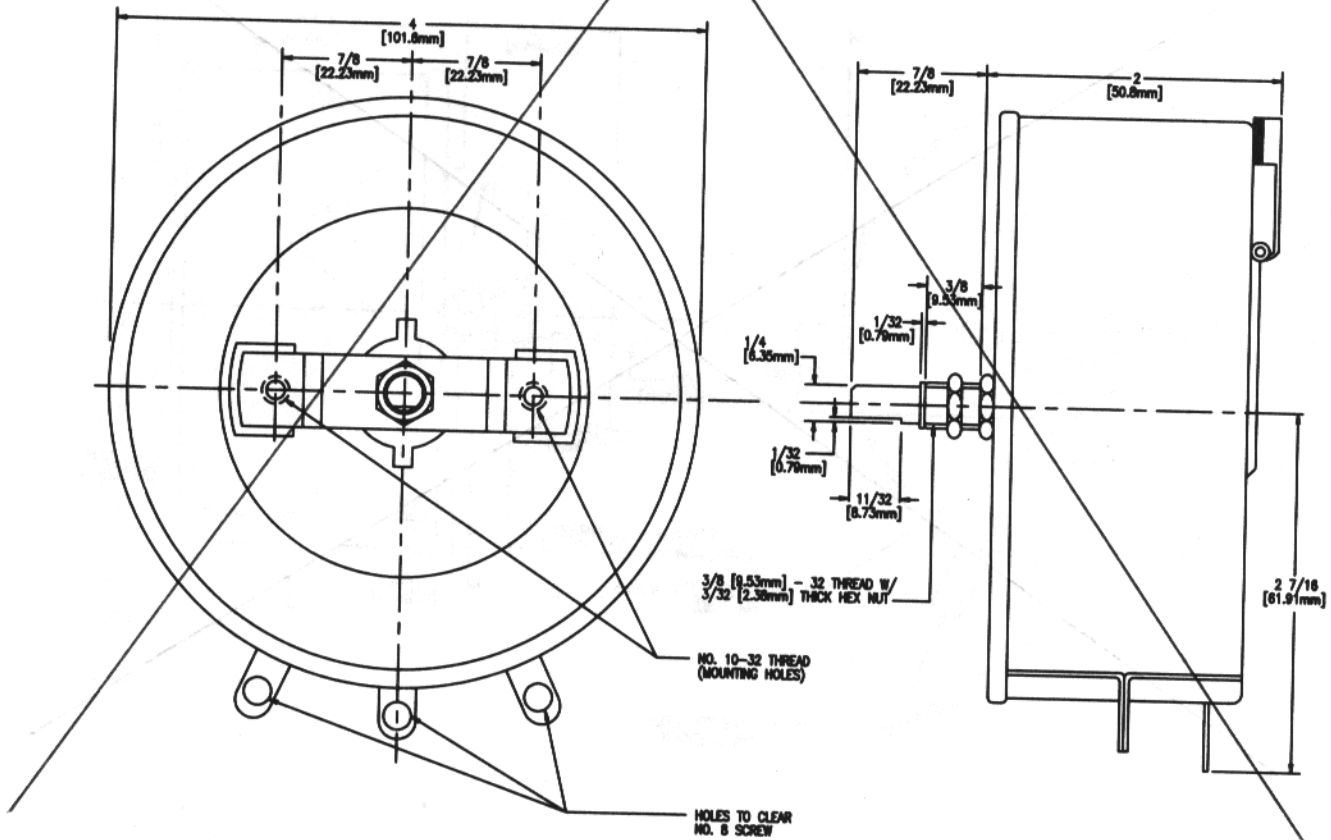


Figure 7

**CR225 - 225 WATTS**

UL APPROVED

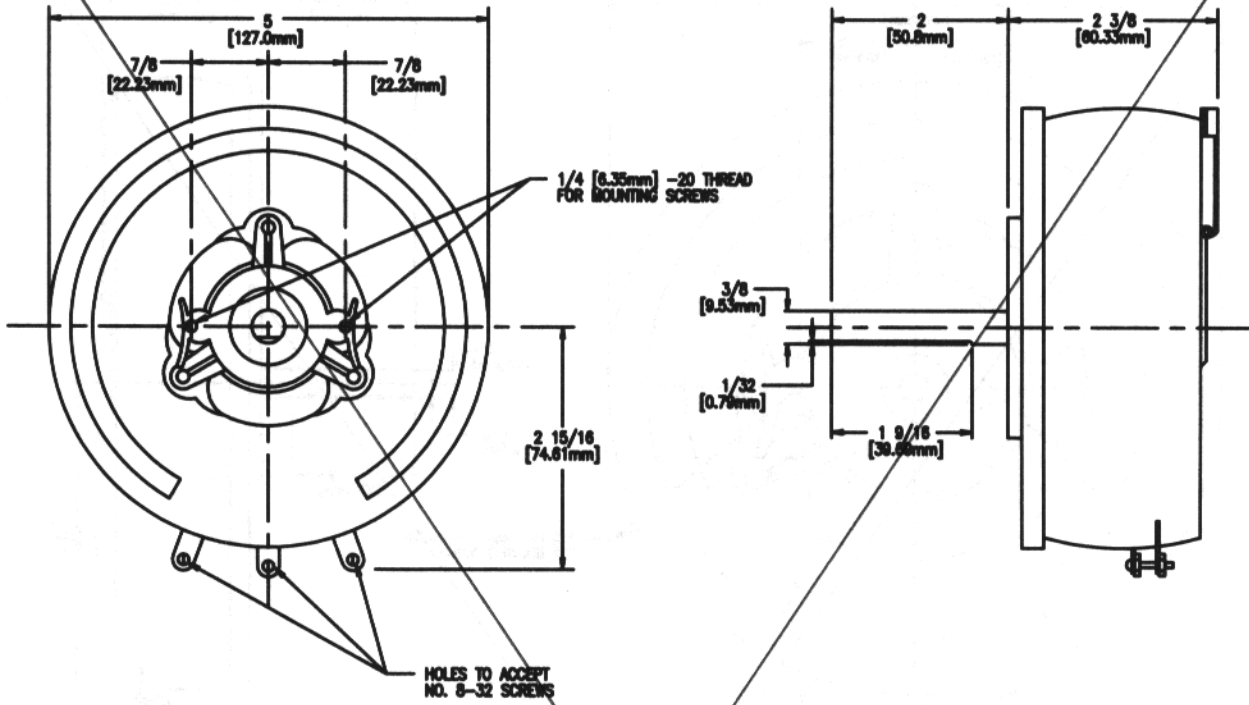


Figure 8

**CR300 - 300 WATTS**

UL APPROVED

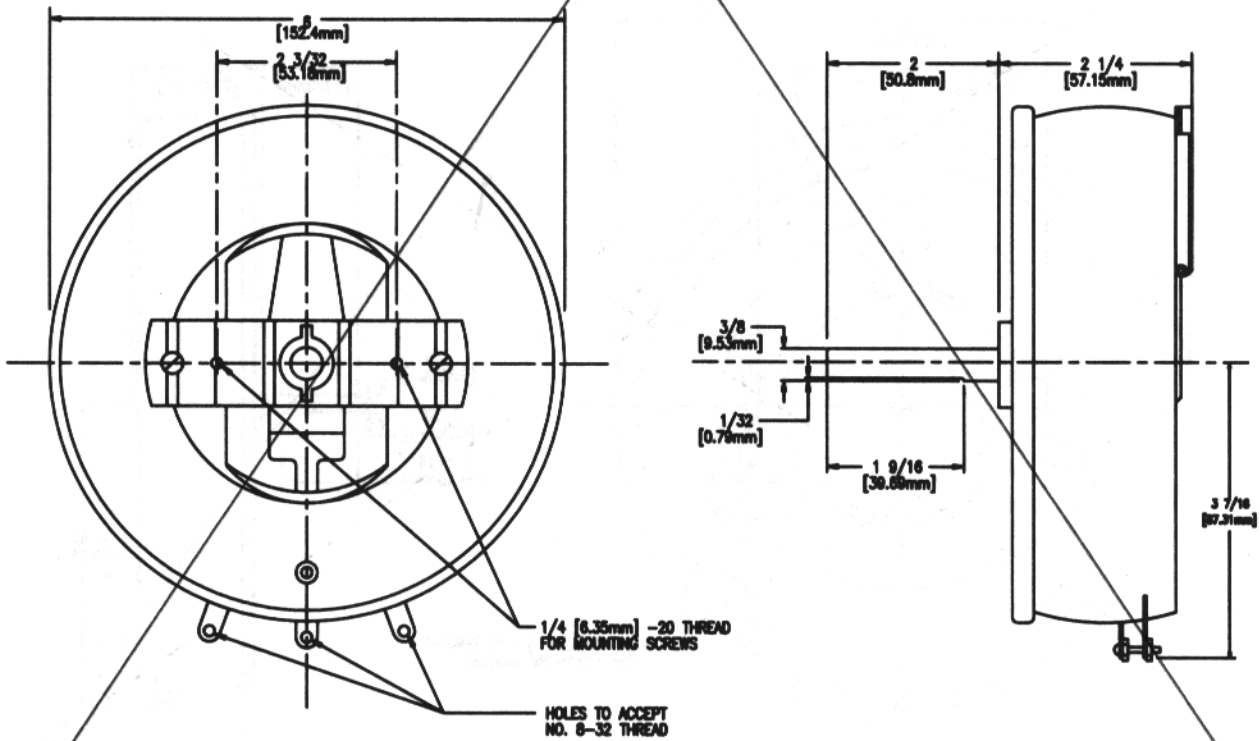


Figure 9

**CR500 - 500 WATTS**

UL APPROVED

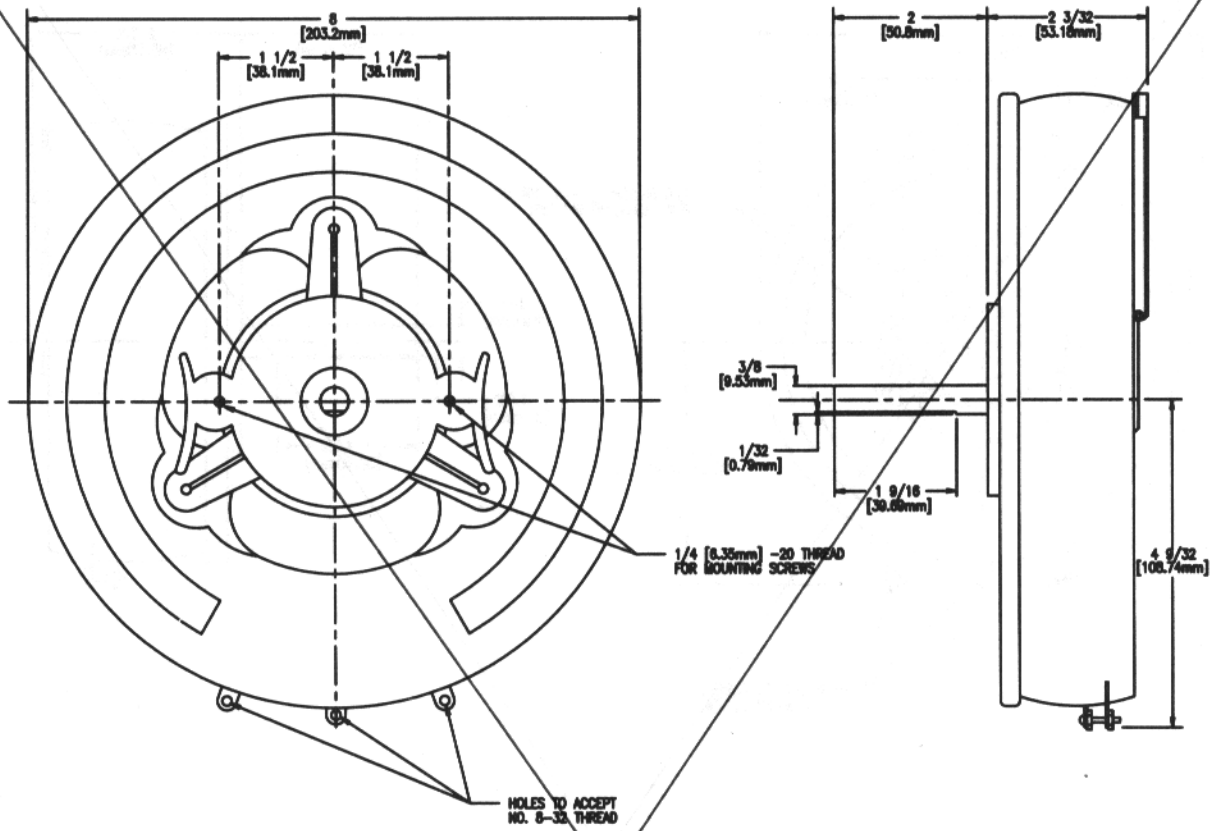
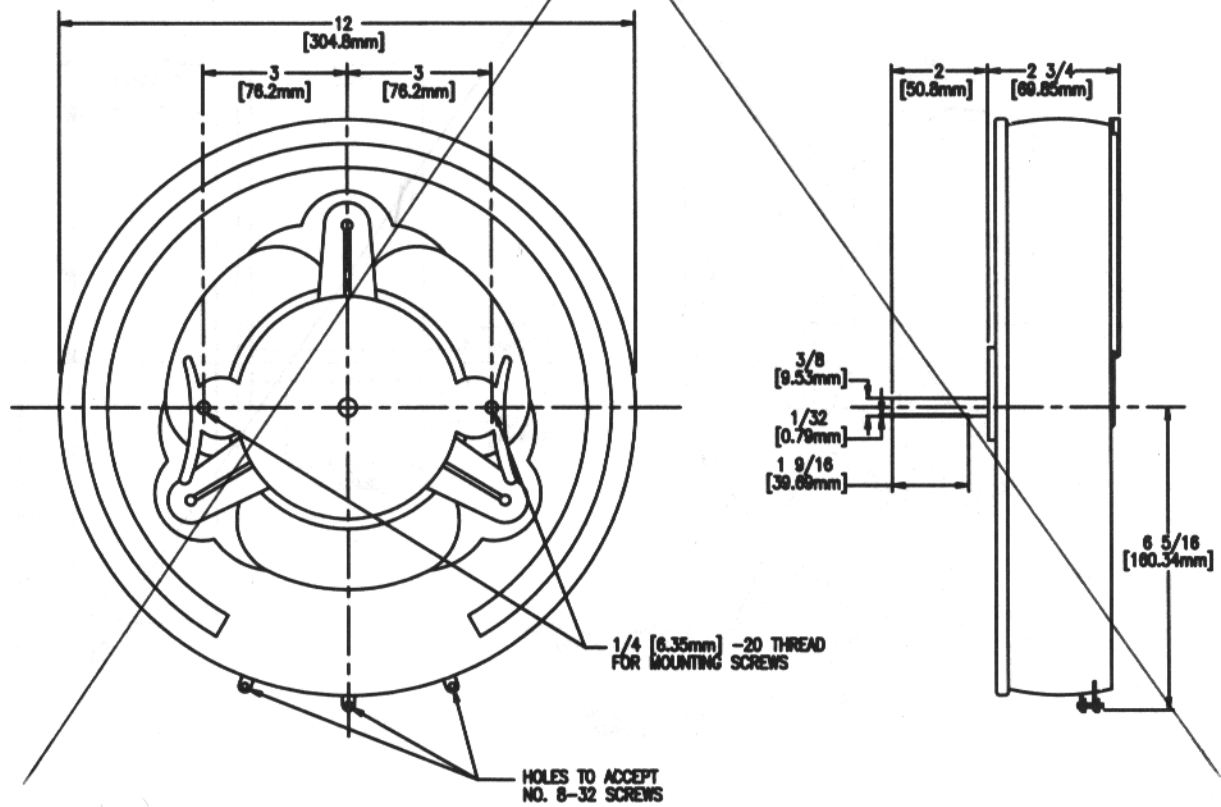


Figure 10

**CR1000 - 1000 WATTS**

UL APPROVED



**Series CR Standard Resistance Values**

**Stock Values (Ohms)**

**CR 12.5**

15	100
25	250
50	1500
75	10K

**CR25**

3	25	125	750	3.5K
6	50	175	1K	5K
10	75	250	1.5K	10K
15	100	500	2.5K	

**CR50**

0.5	225
1	500
50	1K
125	10K

*Notes:*

*12.5, 25, and 50 watt versions are stocked.  
All others are on a made-to-order basis, please  
contact Factory for pricing and minimums.  
Lead time: 6 to 8 weeks for made-to-order items.  
Made-to-order items are non-cancellable,  
non-returnable.*

**Series CR How to Order**

Series/Wattage + Resistance Value = Part Number

**Examples:**

- If 12.5 watts: CR12.5 + 250 Ohms = CR12.5-250
- If 50 watts: CR50 + 225 Ohms = CR50-225
- If 300 watts\*: CR300 + 100 Ohms = CR300-100
- If 1000 watts\*: CR1000 + 750 Ohms = CR1000-750

\*made-to-order.