

PLEASE CHECK WWW.MOLEX.COM FOR LATEST PART INFORMATION

Part Number: **0760151102**
Status: **Active**
Overview: GbX I-Trac™ Backplane Connector System
Description: GbX I-Trac™ Vertical Header Module, 1.85mm by 3.70mm Pitch, Unguided, Open Ends, 7 Rows, 10 Columns, 140 Circuits, Mating Pin Length 3.90mm

Documents:

[3D Model](#) [Packaging Specification PK-70873-802 \(PDF\)](#)
[Drawing \(PDF\)](#) [RoHS Certificate of Compliance \(PDF\)](#)
[Product Specification PS-75710-999-001 \(PDF\)](#)

Agency Certification

UL E29179

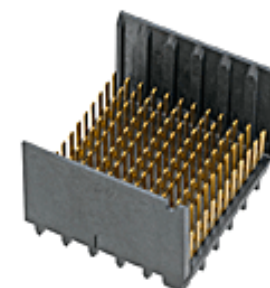
General

Product Family Backplane Connectors
Series 76015
Application Backplane, Midplane, Orthogonal
Component Type PCB Header
Overview GbX I-Trac™ Backplane Connector System
Product Name GbX I-Trac™
UPC 822350957717

Physical

Circuits (Loaded) 140
Circuits (maximum) 140
Color - Resin Black
Durability (mating cycles max) 200
First Mate / Last Break No
Flammability 94V-0
Guide to Mating Part No
Keying to Mating Part None
Material - Metal High Performance Alloy (HPA)
Material - Plating Mating Gold
Material - Plating Termination Tin
Material - Resin High Temperature Thermoplastic
Net Weight 4.840/g
Number of Columns 10
Number of Pairs 4, Open Pin Field
Number of Rows 7
Orientation Vertical
PC Tail Length 2.10mm
PCB Locator No
PCB Retention None
PCB Thickness - Recommended 1.60mm
Packaging Type Tray
Pitch - Mating Interface 1.85mm, 3.70mm
Pitch - Termination Interface 1.00mm, 2.70mm
Plating min - Mating 0.762µm
Plating min - Termination 0.762µm
Polarized to PCB No
Stackable Yes
Surface Mount Compatible (SMC) Yes
Temperature Range - Operating 85°C
Termination Interface: Style Through Hole - Compliant Pin

Electrical



Series image - Reference only

EU ELV

Not Relevant

EU RoHS

Compliant

REACH SVHC

Not Contained Per -
ED/30/2017 (7 July
2017)

Halogen-Free

Status

Low-Halogen

**Need more information on product
environmental compliance?**

Email productcompliance@molex.com
Please visit the [Contact Us](#) section for any
non-product compliance questions.

China ROHS

ELV

RoHS Phthalates

Green Image

Not Relevant

Not Contained

Search Parts in this Series

76015 Series

Mates With

76020 GbX I-Trac™ Right Angle Receptacle
Module

Use With

78227 GbX I-Trac™ Vertical Power
Receptacle. 75234 Backplane Free Standing
Guide Pin

Current - Maximum per Contact	1.0A
Data Rate	12.0 Gbps
Shield Type	N/A
Shielded	No
Voltage - Maximum	120V AC (RMS)/DC

Solder Process Data

Lead-freeProcess Capability	N/A
-----------------------------	-----

Material Info**Reference - Drawing Numbers**

Packaging Specification	PK-70873-802
Product Specification	PS-75710-999-001
Sales Drawing	SD-76015-001

This document was generated on 08/03/2017

PLEASE CHECK WWW.MOLEX.COM FOR LATEST PART INFORMATION