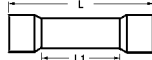
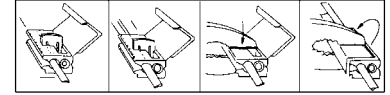


## BUTT CONNECTORS



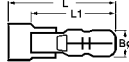
Wire Range	Bulk Number	Pkg.	Dimensions		CSA UL
			L	L1	
22-18	<b>73-730-0</b>	-100	26.0	15.0	UL/CSA
16-14	<b>73-740-0</b>	-50	26.0	15.0	UL/CSA
12-10	<b>73-750-0</b>	-50	26.0	15.0	UL/CSA

## WIRE TAPS



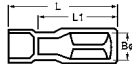
Wire Range	Bulk Number	Pkg.	Color
22-18	<b>73-760-0</b>	-25	Red
16-14	<b>73-770-0</b>	-25	Blue
12-10	<b>73-780-0</b>	-25	Yellow

## MALE BULLET CONNECTORS



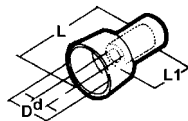
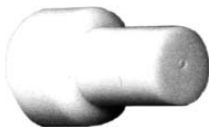
Wire Range	Tab Size	Bulk Number	Pkg.	Dimensions		
				Bo	L	L1
22-18	.157"	<b>73-632-0</b>	-100	4.0	21.6	16.3
16-14 (Blue)	.157"	<b>73-642-0</b>	-100	4.0	21.6	16.3
	.187"	<b>73-644-0</b>	-100	5.0	21.8	16.2
12-10	.187"	<b>73-654-0</b>	-100	5.0	21.8	17.0

## FEMALE BULLET CONNECTORS



Wire Range	Tab Size	Bulk Number	Pkg.	Dimensions		
				Bo	L	L1
22-18	.157"	<b>73-631-0</b>	-100	4.0	24.0	16.5
16-14 (Blue)	.157"	<b>73-641-0</b>	-100	4.0	24.0	16.5
	.187"	<b>73-643-0</b>	-100	5.0	24.0	16.5
12-10	.187"	<b>73-653-0</b>	-100	5.0	24.0	16.5

## CLOSED END CONNECTORS



Wire Range	Bulk Number	Pkg.	Dimensions				CSA UL
			d	D	L	L1	
22-18	<b>73-830-0</b>	-50	2.3	6.5	15.2	7.0	UL/CSA
16-14	<b>73-840-0</b>	-50	3.0	6.8	15.2	7.0	UL/CSA
12-10	<b>73-850-0</b>	-50	4.0	9.5	16.6	9.0	UL/CSA

## TWIST-ON WIRE NUTS



Bulk Number	Pkg.	Color	Min. Wire	Max. Wire	CSA UL
<b>73-961-0</b>	-50	Grey	#20x1+#22x1	#16x2	UL/CSA
<b>73-962-0</b>	-50	Blue	#20 x3	#16x3	UL/CSA
<b>73-963-0</b>	-50	Orange	#22x3	#16x3+#18x1	UL/CSA
<b>73-964-0</b>	-50	Yellow	#14x1+#18x1	#14x2+#16x3	UL/CSA
<b>73-965-0</b>	-50	Red	#12x1+#18x2	#10x3	UL/CSA

## TERMINAL ASSORTMENTS



### 73-001-1

Large terminal assortment with 180 pcs of the most popular ring, spade, butt and quick connect terminals in a durable box.



### 73-006-1

Butt connector assortment. Contains 25 pcs of each wire size.



### 73-007-1

Wire tap assortment. Contains 10 each of 73-760 and 770 and of 6 73-780-0.



### 73-008-1

Closed end connector assortment. Contains 25 each of all 3 sizes.



### 73-009-1

Wire nut assortment. Contains 25 each of gray, blue & orange, 15 red and 10 yellow.

## ECONO-PACKS

All wire terminals are available in low cost but attractive re-usable econo-packs. These packages contain smaller quantities of each terminal. Order part number with **EP** at end. For example 73-631EP.

