

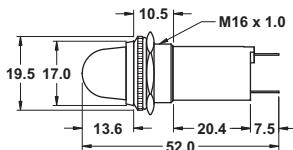


55-056-0 Bulk 12V/140mA lead wire lamp
55-056-2 Display Package (2)



55-120-0 Bulk NE-2 Neon bulb
55-120-2 Display Package (2)

For a complete selection of bulbs, see the 56 series starting on page 57

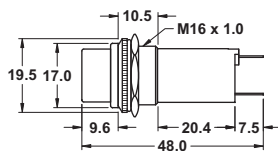


T 3-1/4 (10mm) bayonet base

G3 1/2 Lamps Only

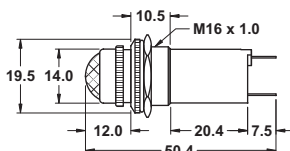
55-322-0 Red Bulk
55-325-0 Green Bulk
Use -1 for Display Package

G3 1/2 Lamps Only



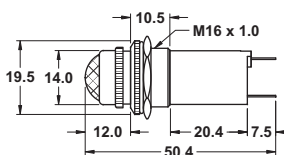
T 3-1/4 (10mm) bayonet base

55-332-0 Red Bulk
55-335-0 Green Bulk
55-339-0 Clear Bulk
Use -1 for Display Package



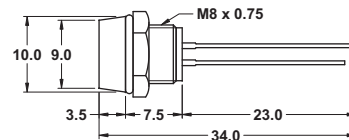
T 3-1/4 (10mm) bayonet base

55-342-0 Red Bulk
55-343-0 Amber Bulk
55-345-0 Green Bulk
55-349-0 Clear Bulk
Use -1 for Display Package



T 3-1/4 (10mm) screw base

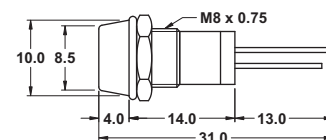
55-365-0 Green Bulk
Use -1 for Display Package



Black plastic bezel LED indicator

These indicators require a resistor to limit current. See note on page 50 for details.

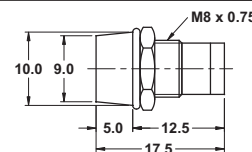
55-431-0 Green LED Bulk
Use -1 for Display Package



Chrome plated LED indicator

These indicators require a resistor to limit current. See note on page 50 for details.

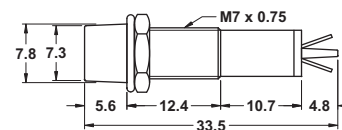
55-432-0 Red LED Bulk
55-433-0 Green LED Bulk
55-434-0 Orange LED Bulk
Use -1 for Display Package



Chrome plated LED holder

Chrome plated holder for 5mm LEDs. LED is not included.

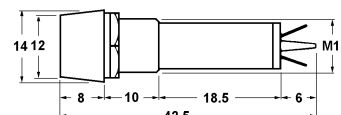
55-439-0 Bulk **55-439-1** Pkg.



Neon indicators (internal resistor) 120VAC

55-442-0 Red lens 120VAC
55-443-0 Amber lens 120VAC
55-445-0 Green lens 120VAC

Use -1 for Display Package

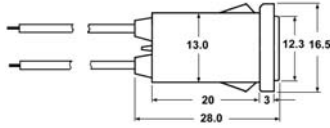


Neon indicators (internal resistor) 120VAC

55-462-0 Red lens 120VAC
55-463-0 Amber lens 120VAC
55-465-0 Green lens 120VAC

Use -1 for Display Package

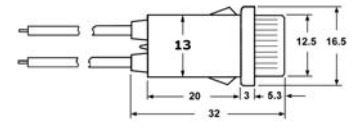
IMPORTANT NOTE:
 The 55-32X series is suitable for G3 1/2 lamps only. (see page 57 for these lamps). T3 1/4 lamps will not fit into the lens of these holders. The 55-34X and 55-365 are suitable for T3 1/4 lamps and LED replacement lamps.
 55-11XX series LED replacement lamps will not fit into any 55-32X, 55-33X, 55-34X and 55-365-0 holder.



Neon indicators (internal resistor) 120VAC

- 55-452-0** Red lens 120VAC
- 55-453-0** Amber lens 120VAC
- 55-455-0** Green lens 120VAC

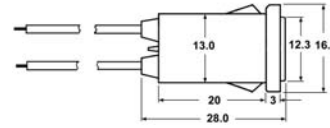
Use -1 for Display Package



Neon indicators (internal resistor) 120VAC

- 55-482-0** Red lens 120VAC
- 55-483-0** Amber lens 120VAC
- 55-485-0** Green lens 120VAC

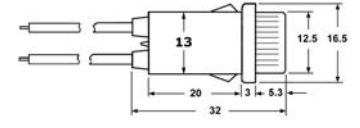
Use -1 for Display Package



Incandescent indicators 12VDC

- 55-472-0** Red lens 12VDC @ 58mA
- 55-473-0** Amber lens 12VDC @ 58mA
- 55-475-0** Green lens 12VDC @ 58mA

Use -1 for Display Package



Incandescent indicators 12VDC and 24VDC

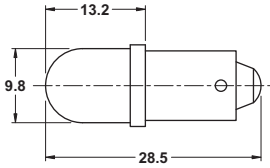
- 55-492-0** Red lens 12VDC @ 58mA
- 55-493-0** Amber lens 12VDC @ 58mA
- 55-495-0** Green lens 12VDC @ 58mA
- 55-496-0** Red lens 24VDC
- 55-497-0** Amber lens 24VDC
- 55-498-0** Green lens 24VDC

Use -1 for Display Package

LED REPLACEMENT LAMPS

T3 1/4 (10mm) Bayonet Base

Energy efficient, long lasting led replacement bulbs are suitable replacements for T3 1/4 (10mm) Bayonet Base Lamps. They are not affected with high vibration or harsh conditions like incandescent bulbs. These replacement bulbs will operate on either AC or DC voltage.



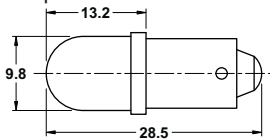
If = 20mA

Part No.	Color	Volts	MCD	
55-110B-0	Blue	6V AC/DC	2800	—
55-110G-0	Green	6V AC/DC	1300	7V Max
55-110R-0	Red	6V AC/DC	2000	
55-110Y-0	Yellow	6V AC/DC	2000	
55-110W-0	White	6V AC/DC	2000	—
55-111B-0	Blue	12V AC/DC	2800	15V Max
55-111G-0	Green	12V AC/DC	1300	
55-111R-0	Red	12V AC/DC	2000	
55-111Y-0	Yellow	12V AC/DC	2000	
55-111W-0	White	12V AC/DC	2000	—
55-112B-0	Blue	24V AC/DC	2800	32V Max
55-112G-0	Green	24V AC/DC	1300	
55-112R-0	Red	24V AC/DC	2000	
55-112Y-0	Yellow	24V AC/DC	2000	
55-112W-0	White	24V AC/DC	2000	

Use -1 for Display Package

T3 1/4 (10mm) Bayonet Base

Energy efficient, long lasting led replacement bulbs are suitable replacements for T3 1/4 (10mm) Bayonet Base Lamps. They are not affected with high vibration or harsh conditions like incandescent bulbs. These replacement bulbs will operate on either AC or DC voltage.



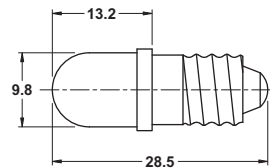
If = 20mA

Part No.	Color	Volts	MCD	
55-113B-0	Blue	120V AC/DC	2800	If = 20mA 130V Max
55-113G-0	Green	120V AC/DC	1300	
55-113R-0	Red	120V AC/DC	2000	
55-113W-0	White	120V AC/DC	2000	
55-113Y-0	Yellow	120V AC/DC	2000	

Use -1 for Display Package

T3 1/4 (10mm) Screw Base

These LED lamps are suitable long life replacements for T3 1/4 screw base lamps. The bottom contact is the anode (+) and the screw sleeve is the cathode. With internal resistor for the specified voltage



If = 20mA

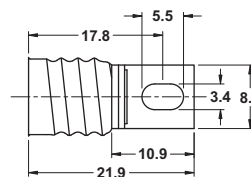
Part No.	Color	Volts	MCD	
55-120G-0	Green	6VDC	1300	7V Max
55-120R-0	Red	6VDC	2000	
55-120Y-0	Yellow	6VDC	2000	
55-120W-0	White	6VDC	2000	15V Max
55-121R-0	Red	12VDC	2000	
55-122B-0	Blue	24VDC	2800	
55-122G-0	Green	24VDC	1300	
55-122Y-0	Yellow	24VDC	2000	32V Max
55-122W-0	White	24VDC	2000	

Use -1 for Display Package

E10 (T3 1/4) SCREW BASE SOCKET



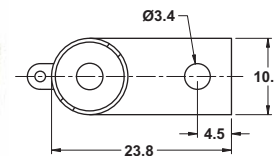
55-200-0 Bulk
55-200-4 Pkg (4)



55-202-0 Bulk
55-202-3 Pkg (3)

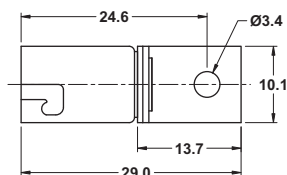
E10 (T3 1/4) BAYONET BASE SOCKETS

55-203-0 Bulk
55-203-3 Pkg (3)



With straight mounting tab.

55-204-0 Bulk
55-204-3 Pkg (3)

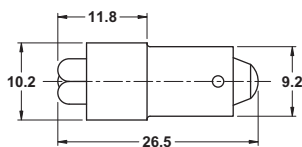


With right angle mounting tab.

SUPER BRIGHT LED REPLACEMENT LAMPS

T3 1/4 (10mm) Bayonet Base

These LED lamps are suitable long life replacements for T3 1/4 bayonet base lamps. With internal resistor for the specified voltage



***Important Note:** This series of LED bulbs are suitable for AC or DC voltage.

Part No.	Color	Volts	MCD	If
55-211B-0	Blue	12V*	4500	32mA
55-211G-0	Green	12V*	17000	32mA
55-211R-0	Red	12V*	21000	32mA
55-211Y-0	Yellow	12V*	21000	32mA
55-211W-0	White	12V*	10000	32mA
55-212G-0	Green	24V*	17000	20mA
55-212R-0	Red	24V*	21000	20mA
55-212Y-0	Yellow	24V*	21000	20mA
55-212W-0	White	24V*	10000	20mA

15V Max

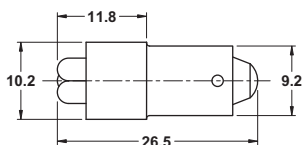
32V Max

Use -1 for Display Package

SUPER BRIGHT 120VAC/DC LED REPLACEMENT LAMPS

T3 1/4 (10mm) Bayonet Base

These LED lamps are suitable long life replacements for T3 1/4 bayonet base lamps. With internal resistor for the specified voltage



If = 4.8mA

Part No.	Color	Volts	MCD
55-214B-0	Blue	120V*	800
55-214G-0	Green	120V*	3000
55-214R-0	Red	120V*	3500
55-214Y-0	Yellow	120V*	3500
55-214W-0	White	120V*	1800

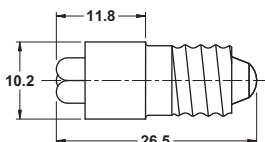
120V Max

Use -1 for Display Package

***Important Note:** This series of LED bulbs are suitable for AC or DC voltage.

T3 1/4 (10mm) Screw Base

These LED lamps are suitable long life replacements for T3 1/4 screw base lamps. With internal resistor for the specified voltage



If = 4.8mA

Part No.	Color	Volts	MCD
55-224W-0	White	120V*	1800

120V Max

Use -1 for Display Package

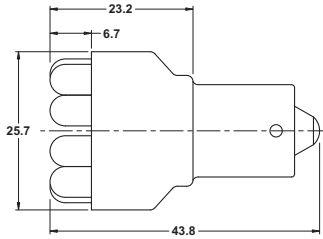
***Important Note:** This series of LED bulbs are suitable for AC or DC voltage.

SUPER BRIGHT LED CLUSTER, SINGLE AND DUAL CONTACT, REPLACEMENT LAMPS

Replaces 1156 bulb



Consists of 12 LED's



These LED lamps are suitable long life replacements for 15mm bayonet base lamps. The bottom contact is the anode (+) and the bayonet sleeve is the cathode. With internal resistor for 12VDC.

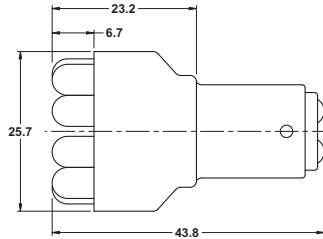
Part No.	Color	Volts	LM	MCD	If
55-256R-0	Super Red	12V	9.5	7500	80mA
55-256G-0	Ultra Green	12V	20.0	21500	80mA
55-256W-0	Super White	12V	15.0	10800	80mA

Use -1 for Display Package **14V Max**

Replaces 1157 bulb



Consists of 12 LED's



These LED lamps are suitable long life replacements for 15mm bayonet base, dual contact lamps. With internal resistor for 12VDC

Part No.	Color	Volts	LM	MCD	If
55-257R-0	Super Red	12V	8.0/1.8	7500	80/25mA
55-257Y-0	Super Yellow	12V	9.5/2.2	8800	80/25mA

Use -1 for Display Package **14V Max**

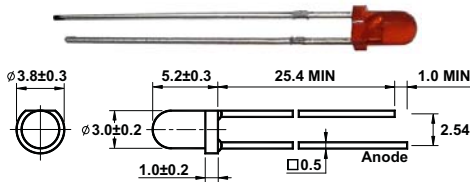
All LED's (excluding the LED indicator lamps with internal resistor) require a resistor in series to limit the current to the required specification (usually 20mA). Use Ohm's law to calculate the value of the resistor required. Most LED's have a voltage drop of 2 volts. Blue & white LED's are 3.5 - 4 volts.

$$V=IR \text{ (volts = current(amps) x resistance)}$$

For a 12VDC supply voltage @ 20mA the required resistor would be:
 $10 \text{ (volts)} / .02 \text{ (amps)} = 500 \text{ ohms}$

LED'S ARE SUITABLE FOR DC ONLY

3mm LED'S



STANDARD 3mm LED'S

Brightness rating @ 10mA

55-532-0	Red	4MCD
55-533-0	Red	35MCD
55-534-0	Yellow	6MCD
55-535-0	Green	15MCD

Use -5 for Display Package

HIGH BRIGHTNESS 3mm LED'S

Brightness rating @ 20mA

55-532HB-0	Red	150MCD
55-534HB-0	Yellow	1200MCD
55-535HB-0	Green	3000MCD
55-536HB-0	White	1200MCD

Use -3 for Display Package

SUPER BRIGHT 3mm LED'S

Brightness rating @ 20mA

55-532SB-0	Red	1800MCD
55-534SB-0	Yellow	2000MCD
55-535SB-0	Green	4000MCD
55-536SB-0	White	1800MCD
55-537SB-0	Blue	2000MCD
55-540SB-0	Pink	1800MCD

Use -1 for Display Package

EXTRA BRIGHT 3mm LED'S

Brightness rating @ 20mA

55-532XB-0	Red	5000MCD
55-534XB-0	Yellow	4000MCD
55-535XB-0	Green	5000MCD
55-536XB-0	White	2400MCD
55-537XB-0	Blue	3500MCD

Use -1 for Display Package

ULTRA BRIGHT 3mm LED'S

Brightness rating @ 20mA

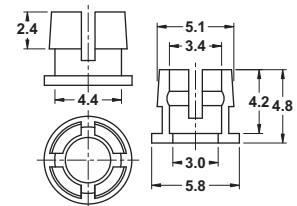
55-532UB-0	Red	7000MCD
55-535UB-0	Green	8000MCD
55-536UB-0	White	6000MCD
55-537UB-0	Blue	4500MCD

Use -1 for Display Package

3mm MOUNTING BEZEL



3mm plastic mounting bezel (1 piece)



55-530-0 Bulk
55-530-10 Disp. Pkg. (10)

LED's continued on next page.

We have many different types of LED's available on special order. If you have a requirement, please contact Mode or your local Distributor for details and order quantities.

3mm BI-COLOR LED'S



Color: Red/Green
Brightness: 15-25/5-10 mcd

55-539-0
55-539-5

Bulk
Display Package (5)

3mm R/A LED'S



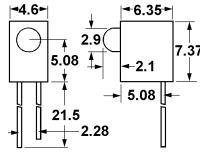
Brightness level @ 10mA

55-542-0
55-545-0

Red
Green

3.2MCD
15MCD

Use -5 for Display Package



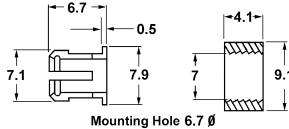
5mm LED HOLDER



Plastic 2 piece panel mount holder for 5mm LED's.

55-550-0
55-550-10

Bulk
Display Package (10)



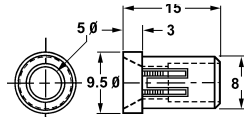
5mm LED HOLDER (concave)



Plastic 1 piece panel mount holder for 5mm LED's.

55-550A-0
55-550A-4

Bulk
Display Package (4)



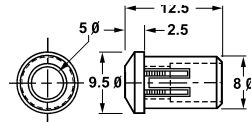
5mm LED HOLDER (convex)



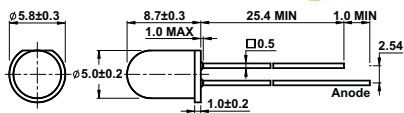
Plastic 1 piece panel mount holder for 5mm LED's.

55-550B-0
55-550B-4

Bulk
Display Package (4)



5mm LED'S



STANDARD 5mm LED's

Brightness rating @ 10mA

55-552-0	Red	5-10MCD
55-553-0	Orange	200-400MCD
55-554-0	Yellow	300-500MCD
55-555-0	Green	100-120MCD
55-558-0	Blue	1000-1500MCD
55-558-1	Display Package	
55-561-0	Violet	50-100MCD
55-561-2	Display Package (2)	

Use -5 for Display Package-except 55-558 and 55-561

HIGH BRIGHTNESS 5mm LED'S

Brightness rating @ 20mA

55-556-0	Red	2500-3500MCD
55-556-5	Display Package (5)	
55-555HB-0	Green	1000-2000MCD
55-558HB-0	Blue	1500-2500MCD
55-559HB-0	White	1500-3000MCD

Use -1 for Display Package-except 55-556

SUPER BRIGHT 5mm LED'S

Brightness rating @ 20mA

55-557-0	Red	2500MCD
55-557-2	Display Package (2)	
55-554SB-0	Yellow	1000-1500MCD
55-554SB-2	Display Package (2)	
55-555SB-0	Green	7000-9000MCD
55-555SB-1	Display Package	
55-558SB-0	Blue	2500-3000MCD
55-558SB-1	Display Package	
55-559SB-0	White	3000-5000MCD
55-559SB-1	Display Package	

EXTRA BRIGHT 5mm LED'S

Brightness rating @ 20mA

55-552XB-0	Red	4000-6000MCD
55-554XB-0	Yellow	3500MCD
55-555XB-0	Green	8K-11KMCD
55-558XB-0	Blue	3000-4000MCD
55-559XB-0	White	4000-6000MCD
55-559XB-2	Display Package (2)	

Use -3 for Display Package-except 55-559XB

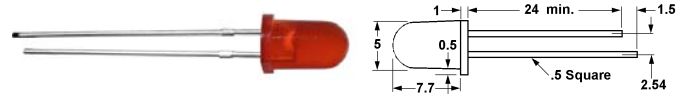
ULTRA BRIGHT 5mm LED'S

Brightness rating @ 20mA

55-552UB-0	Red	10K-12KMCD
55-554UB-0	Yellow	10K-12KMCD
55-555UB-0	Green	15K-20KMCD
55-558UB-0	Blue	8K-10KMCD
55-559UB-0	White	20K-22KMCD
55-559UB-2	Display Package (2)	

Use -3 for Display Package-except 55-559UB

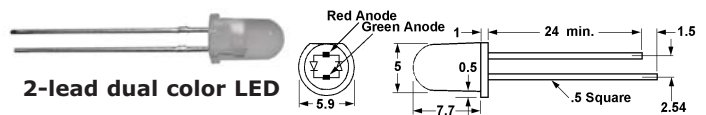
5mm FLASHING LED



Requires no external circuitry.

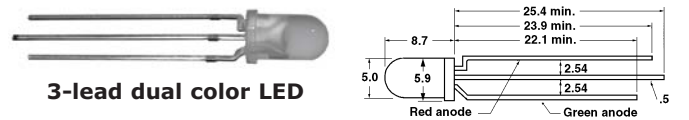
55-572-0	Red	1000MCD (3 - 5VDC)
55-572-2	Display Package (2)	
55-573-0	Red	18MCD (3.5 - 14VDC)
55-573-2	Display Package (2)	

5mm BI-COLOR LED'S



2-lead dual color LED

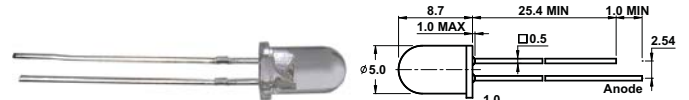
55-582-0	Red/Green	2.2/3.5MCD
55-582-5	Display Package (5)	



3-lead dual color LED

55-592-0	Red/Green	2.2/2.5MCD
55-592-5	Display Package (5)	

5mm INFRARED LED



55-610-0	Emitter
55-611-0	Detector

Use -5 for Display Package

55-612-2	Display Package (2)
-----------------	---------------------

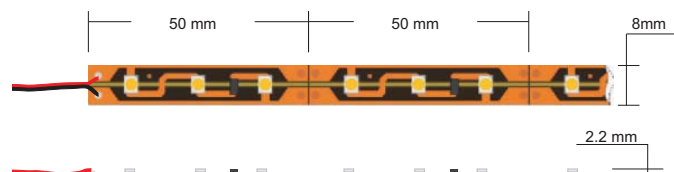
Package content: 55-610-0 and 55-611-0

INDOOR SERIES - BARE PCB LED STRIPS

Input Voltage: DC 12V Regulated
 Forward Current: 0.4A per 1m (60 pcs LED Strip)
 Power Dissipation: 4.8W per 1m (60 pcs LED Strip)
 Non-Waterproof IP20: 2 - Protected against solid objects up to 12mm³, 0 - No protection
 Operating Temperature: -20°C ~ 50°C

Very bright & low power consumption.
 Long life span LED lights, more than 50,000 hours.
 Adhesive back, peel & stick. Ideal for sign letters and channel letters, concealed lights, room lighting

Part Number	Length [m] / LED [PCS]	Material Type	Emitted Color	Lumen / meter	Dominant Wavelength [nm]	Color Temperature [CCT]	View Angle
55-7030B-0	0.5 / 30	InGaN	Blue	150	470	n/a	120
55-7030G-0	0.5 / 30	InGaN	Green	240	525	n/a	120
55-7030R-0	0.5 / 30	AlGaInP	Red	120	625	n/a	120
55-7030Y-0	0.5 / 30	AlGaInP	Yellow	120	590	n/a	120
55-7030W-0	0.5 / 30	InGaN	White	390	n/a	6000	120
55-7030WW-0	0.5 / 30	InGaN	Warm White	360	n/a	3300	120
55-7060B-0	1 / 60	InGaN	Blue	150	470	n/a	120
55-7060G-0	1 / 60	InGaN	Green	240	525	n/a	120
55-7060R-0	1 / 60	AlGaInP	Red	120	625	n/a	120
55-7060Y-0	1 / 60	AlGaInP	Yellow	120	590	n/a	120
55-7060W-0	1 / 60	InGaN	White	390	n/a	6000	120
55-7060WW-0	1 / 60	InGaN	Warm White	360	n/a	3300	120
55-70300B-0	5 / 300	InGaN	Blue	150	470	n/a	120
55-70300G-0	5 / 300	InGaN	Green	240	525	n/a	120
55-70300R-0	5 / 300	AlGaInP	Red	120	625	n/a	120
55-70300Y-0	5 / 300	AlGaInP	Yellow	120	590	n/a	120
55-70300W-0	5 / 300	InGaN	White	390	n/a	6000	120
55-70300WW-0	5 / 300	InGaN	Warm White	360	n/a	3300	120



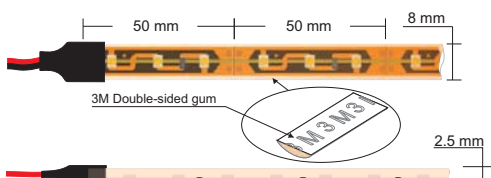
SILICONE COATED SERIES LED STRIPS

Input Voltage: DC 12V Regulated
 Forward Current: 0.4A per 1m (60 pcs LED Strip)
 Power Dissipation: 4.8W per 1m (60 pcs LED Strip)
 Waterproof IP65: 6 - Totally protected against dust, 5 - Protected against low pressure jets of water from all directions - limited ingress permitted
 Operating Temperature: -20°C ~ 50°C

Very bright & low power consumption. Long life span LED lights, more than 50,000 hours. Adhesive back, peel & stick.

Part Number	Length [m] / LED [PCS]	Material Type	Emitted Color	Lumen / meter	Dominant Wavelength [nm]	Color Temperature [CCT]	View Angle
55-7130B-0	0.5 / 30	InGaN	Blue	150	470	n/a	120
55-7130G-0	0.5 / 30	InGaN	Green	240	525	n/a	120
55-7130R-0	0.5 / 30	AlGaInP	Red	120	625	n/a	120
55-7130Y-0	0.5 / 30	AlGaInP	Yellow	120	590	n/a	120
55-7130W-0	0.5 / 30	InGaN	White	390	n/a	6000	120
55-7130WW-0	0.5 / 30	InGaN	Warm White	360	n/a	3300	120
55-7160B-0	1 / 60	InGaN	Blue	150	470	n/a	120
55-7160G-0	1 / 60	InGaN	Green	240	525	n/a	120
55-7160R-0	1 / 60	AlGaInP	Red	120	625	n/a	120
55-7160Y-0	1 / 60	AlGaInP	Yellow	120	590	n/a	120
55-7160W-0	1 / 60	InGaN	White	390	n/a	6000	120
55-7160WW-0	1 / 60	InGaN	Warm White	360	n/a	3300	120
55-71300B-0	5 / 300	InGaN	Blue	150	470	n/a	120
55-71300G-0	5 / 300	InGaN	Green	240	525	n/a	120
55-71300R-0	5 / 300	AlGaInP	Red	120	625	n/a	120
55-71300Y-0	5 / 300	AlGaInP	Yellow	120	590	n/a	120
55-71300W-0	5 / 300	InGaN	White	390	n/a	6000	120
55-71300WW-0	5 / 300	InGaN	Warm White	360	n/a	3300	120
55-7130RGB-0 *	5 / 150	n/a	RGB (Multi)	R: 60 G: 120 B: 75	n/a	n/a	120
55-7160RGB-0 *	5 / 300	n/a	RGB (Multi)	R: 120 G: 240 B: 150	n/a	n/a	120

* RGB Multi Color. DMX compatible. RGB Controller is required (55-725-0)



RGB CONTROLLER



- 9 pattern adjustable controller
- Rated current: 8A
- Rated load current: 8A x 3CHANNEL
- Working Voltage: 12VDC
- Working temperature: -20°C ~ 60°C
- Size: 107x65x24mm
- 3 AAA Batteries Included

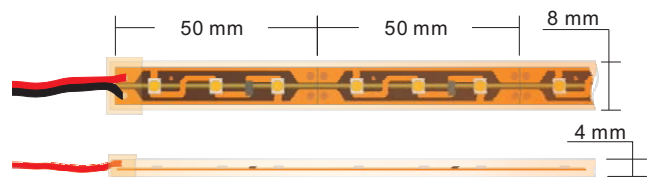
55-725-0

SILICONE SLEEVE SERIES LED STRIPS

Input Voltage: DC 12V Regulated
 Forward Current: 0.4A per 1m (60 pcs LED Strip)
 Power Dissipation: 4.8W per 1m (60 pcs LED Strip)
 Waterproof IP67: 6 - Totally protected against dust, 7 - Protected against the effect of immersion between 15cm and 1m
 Operating Temperature: -20°C ~ 50°C

Very bright & low power consumption. Long life span LED lights, more than 50,000 hours.

Part Number	Length [m] / LED [PCS]	Material Type	Emitted Color	Lumen / meter	Dominant Wavelength [nm]	Color Temperature [CCT]	View Angle
55-7230B-0	0.5 / 30	InGaN	Blue	150	470	n/a	120
55-7230G-0	0.5 / 30	InGaN	Green	240	525	n/a	120
55-7230R-0	0.5 / 30	AlGaInP	Red	120	625	n/a	120
55-7230Y-0	0.5 / 30	AlGaInP	Yellow	120	590	n/a	120
55-7230W-0	0.5 / 30	InGaN	White	390	n/a	6000	120
55-7230WW-0	0.5 / 30	InGaN	Warm White	360	n/a	3300	120
55-7260B-0	1 / 60	InGaN	Blue	150	470	n/a	120
55-7260G-0	1 / 60	InGaN	Green	240	525	n/a	120
55-7260R-0	1 / 60	AlGaInP	Red	120	625	n/a	120
55-7260Y-0	1 / 60	AlGaInP	Yellow	120	590	n/a	120
55-7260W-0	1 / 60	InGaN	White	390	n/a	6000	120
55-7260WW-0	1 / 60	InGaN	Warm White	360	n/a	3300	120
55-72300B-0	5 / 300	InGaN	Blue	150	470	n/a	120
55-72300G-0	5 / 300	InGaN	Green	240	525	n/a	120
55-72300R-0	5 / 300	AlGaInP	Red	120	625	n/a	120
55-72300Y-0	5 / 300	AlGaInP	Yellow	120	590	n/a	120
55-72300W-0	5 / 300	InGaN	White	390	n/a	6000	120
55-72300WW-0	5 / 300	InGaN	Warm White	360	n/a	3300	120



End Cap and Clip for 55-72X and 55-73X Series

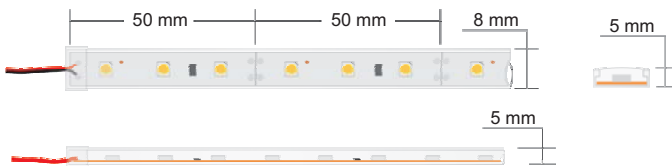


SILICONE ENCAPSULATED SERIES LED STRIPS

Input Voltage: DC 12V Regulated
 Forward Current: 0.4A per 1m (60 pcs LED Strip)
 Power Dissipation: 4.8W per 1m (60 pcs LED Strip)
 Waterproof IP68: 6 - Totally protected against dust, 8 - Protected against long periods of immersion under pressure
 Operating Temperature: -20°C ~ 50°C

Very bright & low power consumption. Long life span LED lights, more than 50,000 hours.

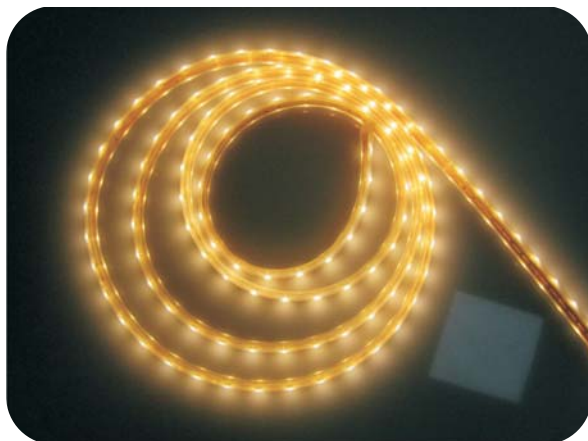
Part Number	Length [m] / LED [PCS]	Material Type	Emitted Color	Lumen / meter	Dominant Wavelength [nm]	Color Temperature [CCT]	View Angle
55-7330B-0	0.5 / 30	InGaN	Blue	150	470	n/a	120
55-7330G-0	0.5 / 30	InGaN	Green	240	525	n/a	120
55-7330R-0	0.5 / 30	AlGaInP	Red	120	625	n/a	120
55-7330Y-0	0.5 / 30	AlGaInP	Yellow	120	590	n/a	120
55-7330W-0	0.5 / 30	InGaN	White	390	n/a	6000	120
55-7330WW-0	0.5 / 30	InGaN	Warm White	360	n/a	3300	120
55-7360B-0	1 / 60	InGaN	Blue	150	470	n/a	120
55-7360G-0	1 / 60	InGaN	Green	240	525	n/a	120
55-7360R-0	1 / 60	AlGaInP	Red	120	625	n/a	120
55-7360Y-0	1 / 60	AlGaInP	Yellow	120	590	n/a	120
55-7360W-0	1 / 60	InGaN	White	390	n/a	6000	120
55-7360WW-0	1 / 60	InGaN	Warm White	360	n/a	3300	120
55-73300B-0	5 / 300	InGaN	Blue	150	470	n/a	120
55-73300G-0	5 / 300	InGaN	Green	240	525	n/a	120
55-73300R-0	5 / 300	AlGaInP	Red	120	625	n/a	120
55-73300Y-0	5 / 300	AlGaInP	Yellow	120	590	n/a	120
55-73300W-0	5 / 300	InGaN	White	390	n/a	6000	120
55-73300WW-0	5 / 300	InGaN	Warm White	360	n/a	3300	120



End Cap and Clip for 55-72X and 55-73X Series



LED STRIP DIMMER



- Single color LED Strips Dimmer (not for 55-7130RGB-0 or 55-7160RGB-0)
- Maximum up to 18A current output
- Working Voltage: 12VDC
- Working temperature: -20°C ~ 60°C
- Size: 107x55x24mm
- Sturdy aluminum frame

55-724-0

8MM SOLDERLESS LED STRIP CONNECTOR



8mm Solderless LED Strip Connector with 6" leads.

55-740-0 Bulk

10MM SOLDERLESS RGB STRIP CONNECTOR



10mm Solderless RGB LED Strip Connector with 6" leads.

55-750-0 Bulk



8MM SOLDERLESS LED STRIP JOINER

55-742-0 Bulk



10MM SOLDERLESS RGB STRIP JOINER

55-752-0 Bulk

8MM SNAP-ON LED STRIP CONNECTOR



8mm Snap-on LED Strip Connector with 6" leads.

55-744-0 Bulk

10MM SNAP-ON LED STRIP CONNECTOR



10mm Snap-on LED Strip Connector with 6" leads.

55-745-0 Bulk



8MM SNAP-ON LED STRIP JOINER

55-746-0 Bulk



10MM SNAP-ON LED STRIP JOINER

55-747-0 Bulk



10MM SNAP-ON RGB LED STRIP JOINER

55-756-0 Bulk

8MM SNAP-ON LED STRIP JOINER



8mm Snap-on LED Strip Joiner with 6" leads.

55-748-0 Bulk

10MM SNAP-ON RGB LED STRIP JOINER



10mm Snap-on RGB LED Strip Joiner with 6" leads.

55-758-0 Bulk

Note: 8mm Connectors are for standard single color LED Strips. 55-750-0, 55-752-0, 55-756-0 and 55-758-0 10mm Connectors are for RGB LED Strips.

LAMP CROSS-REFERENCE

Generic lamp number to Mode part number.

Important Note: This cross-reference only indicates the closest Mode part for the generic lamp numbers. If the Mode # is the same as the generic # they are identical parts. The Mode lamps were selected to be suitable replacements for a number of lamps. They may not be electrically identical. Our objective was to offer a limited number of lamps that could replace many of the similar generic items. Please make sure to check the exact specifications for a replacement to make sure that it is suitable.

PR2	56-PR2	68	56-1178	431	56-0293	3150	56-0349
PR4	56-PR2	82	56-0064	455	56-0055	6839	56-6839
PR5	56-PR2	90	56-1178	456	56-0456	7326	56-0373
PR6	56-PR6	94	56-1076	459	56-0459	7327	56-7376
PR9	56-PR6	251	56-0375	502	56-0502	7332	56-0349
PR14	56-PR6	257	56-0293	503	56-0055	7333	56-0349
PR31	56-PR6	293	56-0293	624	56-0624	7334	56-0349
PR3	56-PR17	304	56-0624	685	56-0718	7346	56-0398
PR7	56-PR17	328	56-0349	714	56-0718	7376	56-7376
PR30	56-PR17	398	56-0398	718	56-0718	7387	56-7376
PR13	56-PR17	407	56-0407	1076	56-1076	7420	56-0022
PR32	56-PR17	332	56-0349	1109	56-1076	7876	56-7376
PR15	56-PR17	335	56-0399	1118	56-1076	8022	56-0718
PR17	56-PR17	336	56-0346	1142	56-1076	8362	56-0373
PR12	56-PR20	337	56-0398	1152	56-1076		
PR18	56-PR20	338	56-0375	1178	56-1178		
PR20	56-PR20	345	56-0349	1224	56-1224		
22	56-0022	346	56-0346	1228	56-1229		
27	56-0502	349	56-0349	1229	56-1229		
32	56-0022	350	56-0349	1252	56-0624		
41	56-0042	369	56-0399	1638	56-1638		
42	56-0042	370	56-0459	1738	56-1738		
43	56-0043	373	56-0373	1764	56-1764		
48	56-0042	375	56-0375	1767	56-1769		
49	56-0043	362	56-0373	1769	56-1769		
55	56-0055	377	56-0349	1895	56-0293		
57	56-0293	379	56-0398	2176	56-1764		
57X	56-0293	380	56-0349	2185	56-1764		
58	56-1738	381	56-0349	2187	56-1764		
64	56-0064	386	56-0346	2370	56-1764		

FLASHLIGHT BULBS (B3 1/2)



Part No.	Volts	Amps	CP	Life
56-PR2-0	2.38	.50	.80	15
56-PR6-0	2.47	.30	.45	30
56-PR17-0	4.90	.30	1.2	31.8
56-PR20-0	8.63	.50	5.0	31.8

SCREW/BAYONET (G4 1/2)



Part No.	Base	Volts	Amps	CP	Life
56-0407-0	Screw	4.90	.30	1.2	50
56-0502-0	Screw	5.10	.15	.60	100
56-0055-0	Bay	7.0	.41	2.0	500
56-0293-0	Bay	14.0	.33	2.0	7500
56-0456-0	Bay	28.0	.17	2.0	3000

DC BAYONET (G6)



Part No.	Base	Volts	Amps	CP	Life
56-0064-0	Bay	7.0	.63	3.0	1000
56-1178-0	Bay	13.5	.69	4.0	5000
56-0624-0	Bay	28	.37	6.0	1000
56-1224-0	Bay	34.0	.16	3.8	275

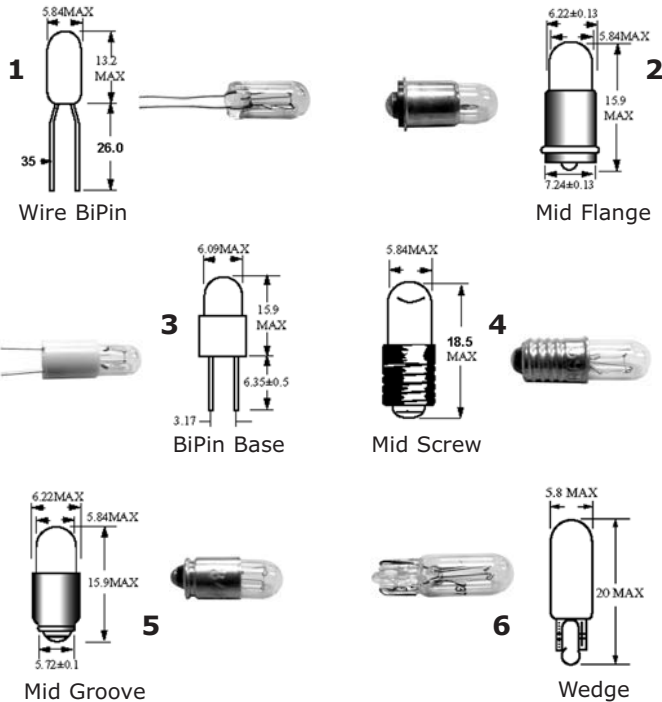
DC BAYONET (S8)



Part No.	Base	Volts	Amps	CP	Life
56-1076-0	Bay	12.8	1.8	32	200
56-1638-0	Bay	28.0	1.02	32	500
56-1229-0	Bay	34.0	.45	15	275

Lamp Specifications:
Current in Amperes
CP = Mean Spherical Candle Power
Life is listed in hours.

T1 3/4 BULBS



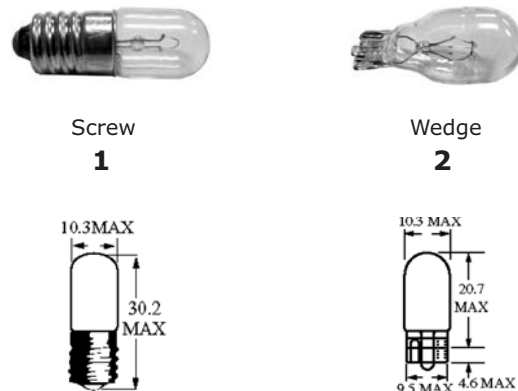
Part No.	Base	Volts	Amps	CP	Life
56-1738-0	1	2.70	.06	.04	6000
56-1764-0	1	28.0	.04	.34	4000
56-0375-0	2	3.0	.015	.003	20K
56-0349-0	2	6.3	.20	.55	20K
56-0459-0	2	22.0	.04	.30	5000
56-7376-0	3	28.0	.065	.65	10K
56-1769-0	4	2.5	.20	.20	1000
56-0373-0	4	14.0	.08	.50	2500
56-0399-0	4	28.0	.04	.30	7000
56-0398-0	5	6.3	.20	.55	20K
56-0346-0	5	18.0	.04	.15	10K

T1 BULBS



Part No.	Base	Volts	Amps	CP	Life
56-0718-0	MF	5.0	.115	.15	40K
56-0022-0	MF	14.0	.04	.132	16K
56-6839-0	MF	28.0	.024	.15	16K

T3 1/4 BULBS



Part No.	Base	Volts	Amps	CP	Life
56-0042-0	1	3.2	.35	.50	3000
56-0464-0	2	28.0	.17	3.0	1500

The lamps shown in this catalog are stocked. We have many additional types available - contact us or your local Distributor for details.

Have you ever wondered where the bulb size designations came from or what they mean? So did we... they refer to increments of .125" (1/8"). For example a T1 is .125" in Diameter. A T3 1/4 is 3.25 x .125 = .40625". In Metric a T1 3/4 is considered 5mm and T3 1/4 is considered 10mm.