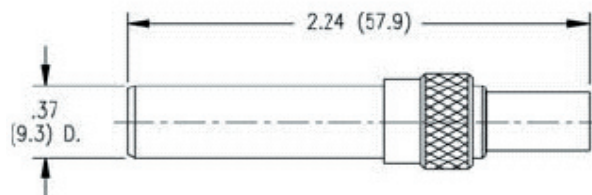


7510 SERIES

Patch Plugs, Adapter, and Termination

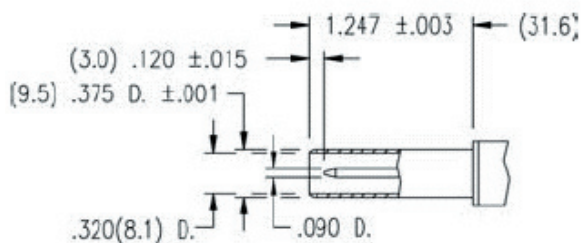
Standard Size

Broadcast



P/N 7510-1 Patch Plug

SOLID RELIABILITY
POINT-TO-POINT SOLUTIONS



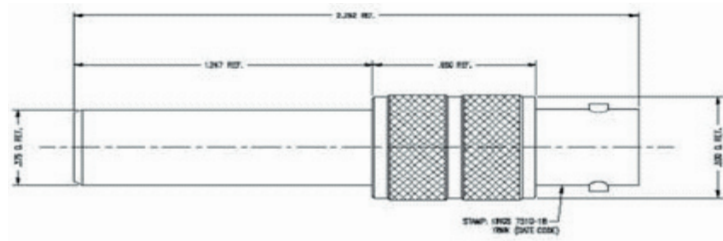
Patch Plug Interface

Connector	P/N	Pin Size	Cable	Crimp Die	Cabling
Patch Plug, Cable Entry	7510-1	0.090"	RG-59/U	KTH-2002	CP-470
Patch Plug, Cable Entry	7510-2	0.090"	Belden 9259	KTH-2002	CP-470
Patch Plug, Cable Entry	7510-4	0.090"	Belden 8281	KTH-2012	CP-470
Patch Plug, Cable Entry	7510-16	0.090"	Belden 1694A	KTH-2267	CP-470



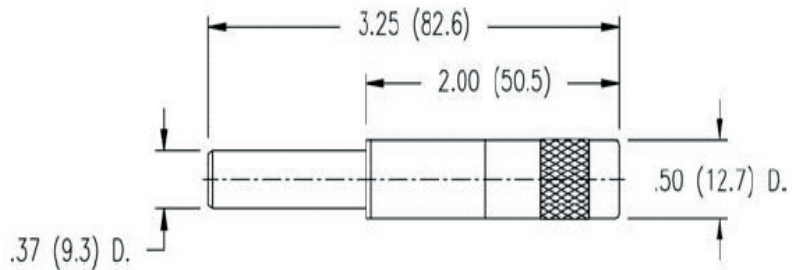
7510 SERIES

Patch Plugs, Adapter, and Termination Standard Size



P/N 7510-18

Adapter, Patch Plug to BNC



Resistance: 75 ohms

P/N 7510-7 Patch Plug Termination

1685 Overview Drive
Rock Hill, SC 29730
www.kingselectronics.com
Manufactured in the USA

Toll Free
Main
Customer Support
Technical Support

888-909-5551
803-909-5000
803-909-5500
803-909-5086

KINGS
ELECTRONICS CO., INC.

Your Solid, Point-To-Point Connection