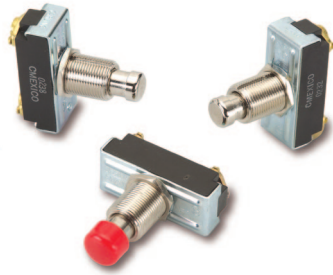


## 170/172-Series Pushbutton Switches



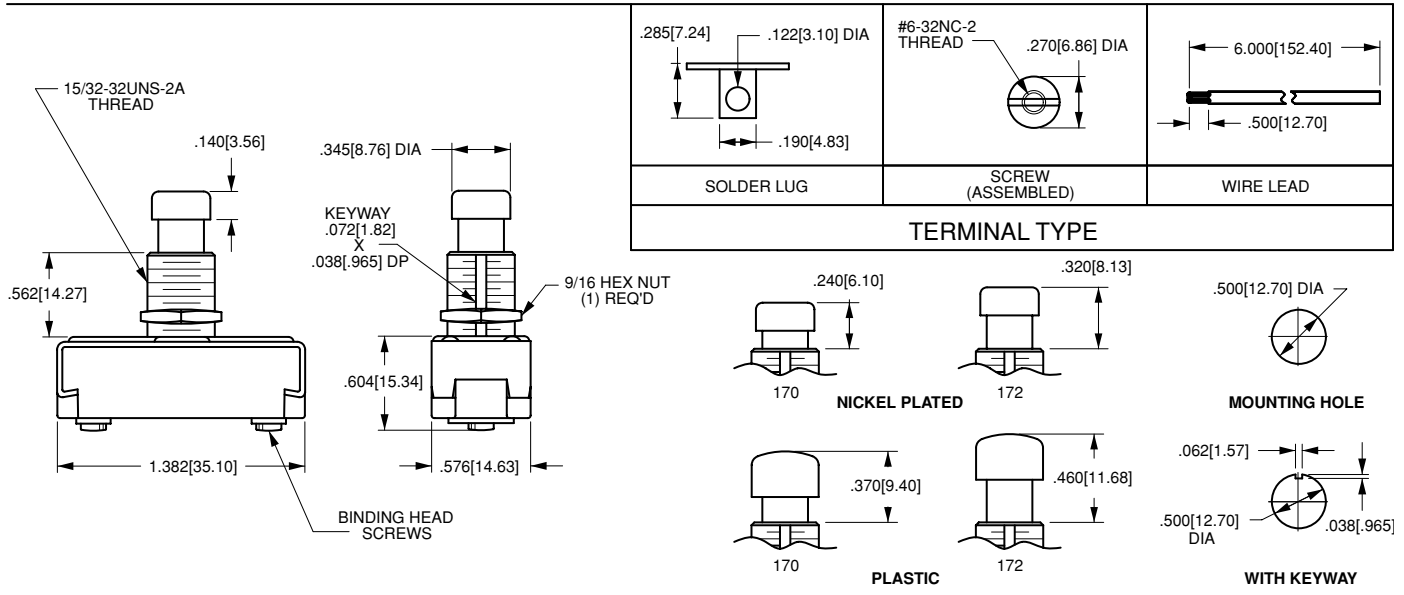
The 170/172-Series pushbutton switches are single pole, high amperage switches suitable for shallow back panel applications. These switches are momentary action and require an actuation force of 2.5 lbs. The 170/172-Series switches are equipped with a slow-make, slow-break contact mechanism and are rated at 15 amps at 125VAC.

**Dielectric Strength**  
UL/CSA: 1000V - live to dead metal parts

**Electrical Life**  
25,000 cycles- momentary

**Mechanical Life**  
100,000 cycles

**Operating Temperature**  
32°F to 185°F (0°C to +85°C)



**172** - **CBL**

<sup>1</sup> Base Part Number

<sup>2</sup> Cap Style/Color

**1 BASE PART NUMBER: SERIES/POLES/CIRCUITRY/RATING/TERMINATION**

*Single Pole*  
**10A 250VAC; 15A 125VAC**

	solder lugs	wire leads	screw terminals
ON-(OFF) <sup>2</sup>	170-B	170-A	170
OFF-(ON) <sup>2</sup>	172-B	172-A	172

**2 CAP STYLE/COLOR<sup>1</sup>**

<b>CBL</b>	black plastic
<b>CGN</b>	green plastic
<b>CRD</b>	red plastic
<b>CWH</b>	white plastic

**NOTES**

- <sup>1</sup> When selection 2 is left blank, a standard nickel plated plunger is supplied.
- ( ) Indicates momentary function.