

Part # Search

- [About Curtis](#)
- [ISO Certified](#)
- [Distributors](#)
- [Reps](#)
- [Competitor Cross Reference](#)
- [Catalog PDF's](#)
- [Contact Us](#)
- [Sample Request](#)
- [What's New](#)
- [Shipment Track](#)
- [FAQ's](#)
- [Glossary](#)
- [Check Stock](#)
- [Terms and Conditions](#)

An Introduction to **Curtis Industries**
A Div. of Powers Holdings, Inc.

[Flash Version](#)
[PDF Version](#)

Medical Filters – F3000/3100/3200/3400/3500 Series



Features

- ? Meets UL 544 specifications for medical and dental equipment
- ? Effective in low-leakage current applications
- ? F3400/3500 Series have enhanced differential mode performance

Specifications

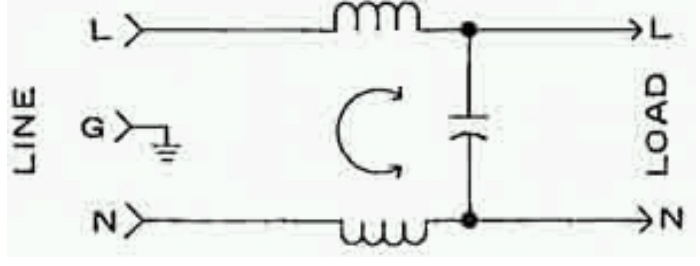
Rated Voltage:	250VAC Max., 50/60 Hz.	
Rated Current at:	115VAC	250VAC
	3A	3A
	6A	5A
Maximum Operating Ambient Temperature at Rated Current:	40° C	
Humidity Range:	0-95% R.H.	
Insulation Resistance:	9 x 10 ⁹ ohms at 100VDC	
Maximum Leakage Current		

Safety Agency Recognition/Approvals

All Units are Approved under VDE File No.11722 -4730 -1002 and 1004.

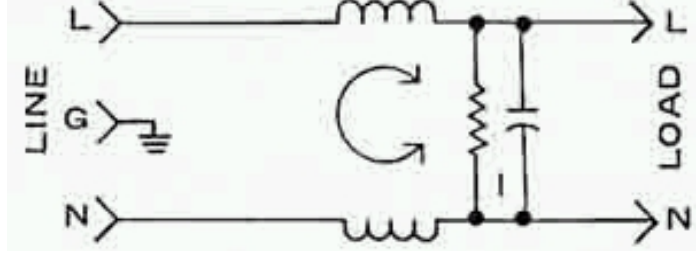
Schematic

F3000/3100/3200 Series



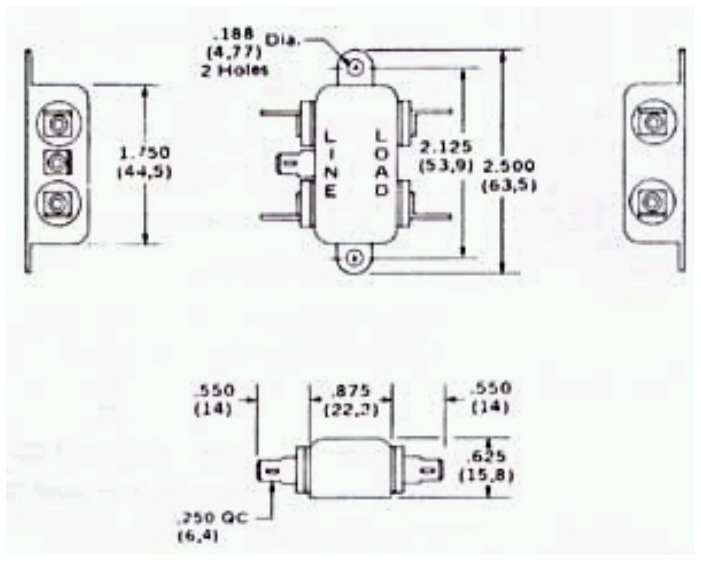
Each Line to Ground	F3000
at 115VAC, 60 Hz.:	2 ? A
at 250VAC, 50 Hz.:	2 ? A
Hipot Test (one minute) -	
Line to Ground:	1500VAC
Line to Line:	1768VDC

F3400/3500 Series

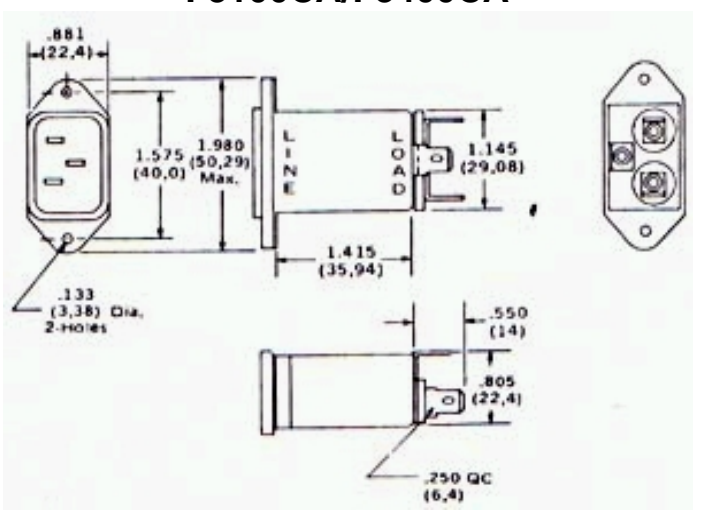


Nominal Current Rating	Part Number	Termination Line/Load	MINIMUM INSERTION LOSS- dB (50 ohm Circuit)						
			Mode	.15	.5	1.0	5.0	10	30
3A	F3400CA03	IEC/QC	Common	22	32	35	30	25	20
	F3500CA03	IEC/QC	Differential	8	18	24	35	35	35
6A	F3000AA06	QC/QC	Common	10	20	23	25	23	15
	F3100CA06	IEC/QC							
	F3200CA06	IEC/QC							
	F3400CA06	IEC/QC	Common	15	21	24	24	22	26
	F3500CA06	IEC/QC	Differential	8	18	24	35	35	35

F3000AA



F3100CA/F3400CA



F3200CA/F3500CA

