

MOLDED DIALLYL INSULATED TERMINALS

DIALLYL PHTHALATE INSULATED TERMINAL

MATERIAL: Terminal: Brass per ASTM B16, Alloy C36000, 1/2 Hard

Insulation*: Molded Diallyl Phthalate, SDGF (Standard Color: Blue)

Base: Brass per ASTM B16, Alloy C36000, 1/2 Hard (Brass per QQ-B-626, Alloy 360)

STANDARD FINISH: Terminal: Electro-Solder

Diallyl Phthalate is recommended for continuous duty temperatures up to 350° F. It has a high dielectric breakdown and has a 94VO UL Rating.

* Other Finish and Colors Available.

GENERAL PROPERTIES OF DIALLYL PHTHALATE

MATERIAL PROPERTIES

PROPERTY	ASTM METHOD	US UNITS
Specific Gravity	D-792A	1.85-1.95
Apparent Density	D-1895	0.75 g/cm ³
Bulk Factor (approximately)	D-1895	2.3
Shrink (C)	D-955	0.0015-0.0030 in/in

PERMANENCE

PROPERTY	ASTM METHOD	US UNITS
Flammability (Ign/B)	Fed.2023	110/40 Sec.
U.L.Rating 1/8"	UL94	94VO
U.L.Rating 1/16"	UL94	94VO

MECHANICAL PROPERTIES

PROPERTY	ASTM METHOD	US UNITS
Impact (Izod)	D-256A	1.0 ft.lb./in
Flexural Strength (C/T)	D-790	16,000/19,000psi
Flexural Modulus	D-790	1.8x10 ⁶ psi
Tensile Strength	D-651	7,500 psi
Compressive Strength	D-695	28,000 psi
Water Absorption		0.25%

ELECTRICAL PROPERTIES

PROPERTY	ASTM METHOD	US UNITS
Dielectric Strength	D-149	400+/400+VPM
60 Hz ST/SS, as is		400/375 VPM
60 Hz ST/SS, wet		
Dielectric Constant	D-150	4.1/4.0
1 khz/1 mhz, as is		4.3/4.1
1 khz/1 mhz, wet		
Dissipation Factor	D-150	.009/.013
1 khz/1 mhz, as is		.010/.016
1 khz/1 mhz, wet		
Volume Resistivity	D-257	1 x 10 ¹⁶ Ohm/cm
as is		1 x 10 ¹⁴ Ohm/cm
wet		130Sec.
Arc Resistance	D-495	

THERMAL PROPERTIES

PROPERTY	ASTM METHOD	US UNITS
Deflection Temperature	D-648A	450°F
Continuous Use Temperature		350°F
Coefficient Thermal Expansion	D-696	15 x 10 ⁻⁶ in/in/°C

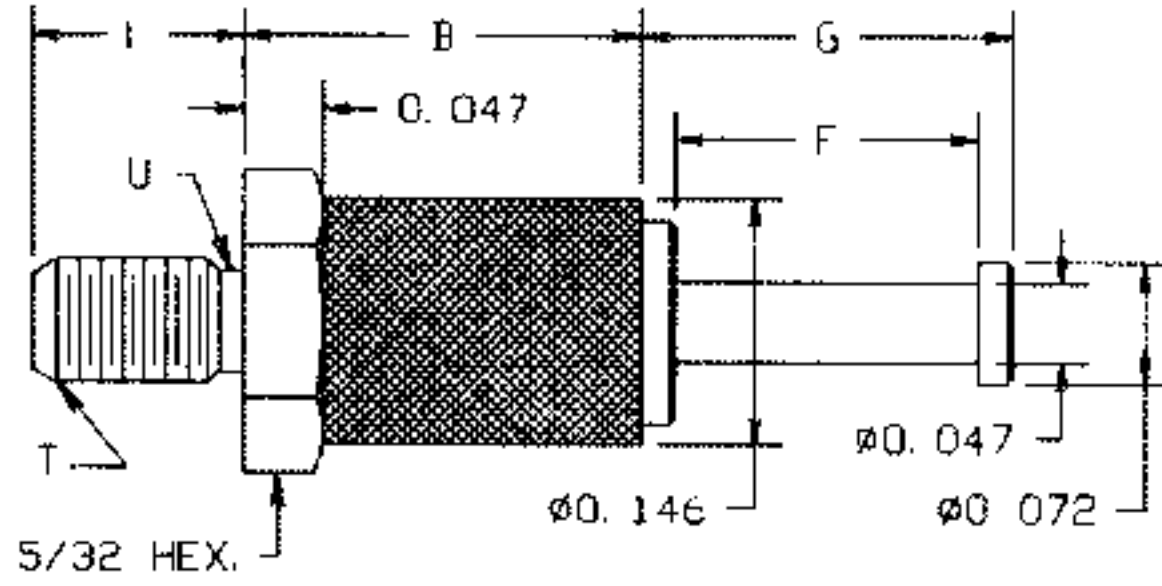


FIG.1200

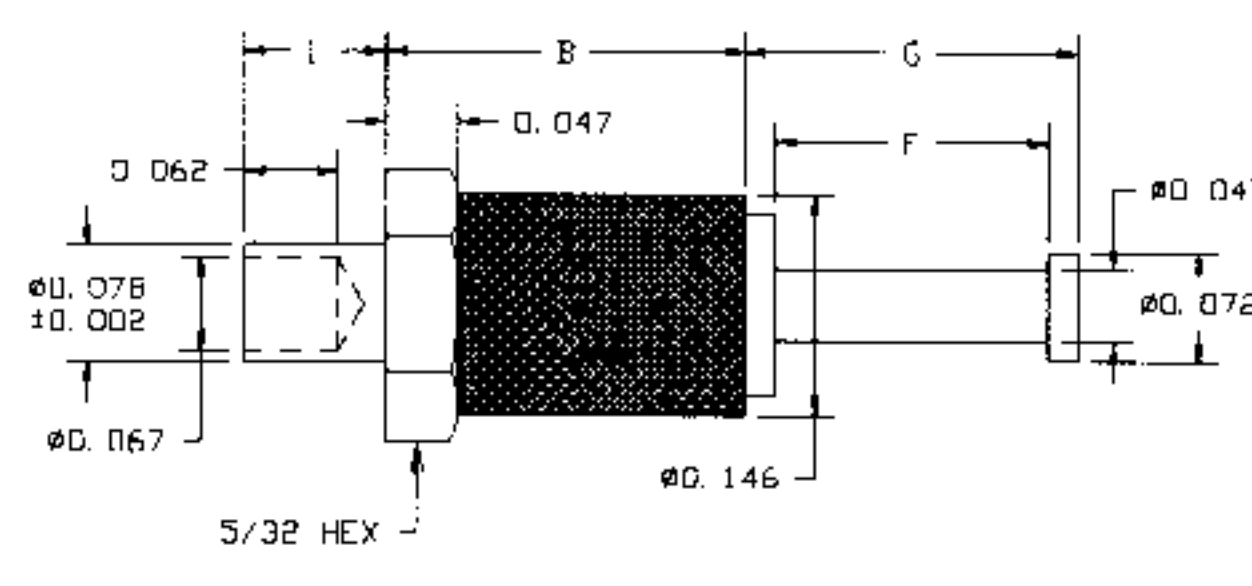


FIG.1205

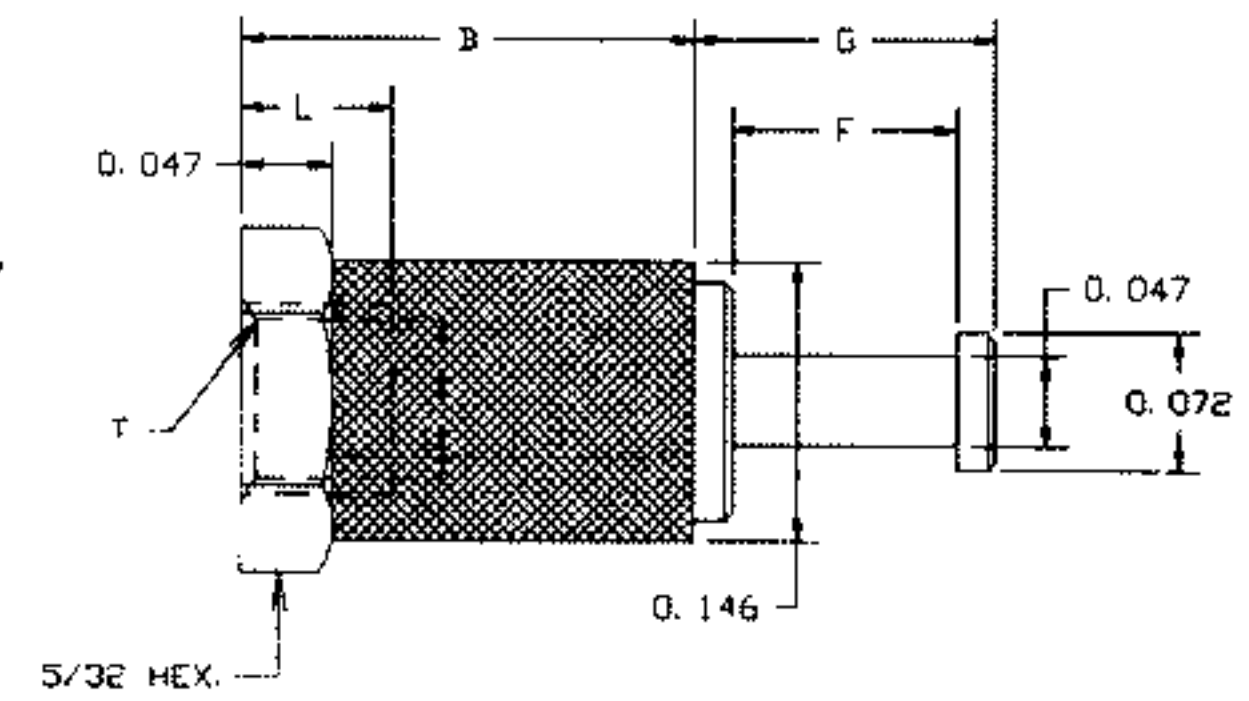


FIG.1210

FIG.	PART NO.	FOR PANEL THK.	L	T THREAD	B	F	G	DIELECTRIC WITHSTANDING VOLTAGE
FIG.1200	1127-56	-	.125	2-56	.235	.116	.156	3000 VRMS
	1127-57	-	.188	2-56	.235	.116	.156	
	1127-58	-	.250	2-56	.235	.116	.156	
	1127-59	-	.125	2-56	.235	.179	.219	
	1127-60	-	.188	2-56	.235	.179	.219	
	1127-61	-	.250	2-56	.235	.179	.219	
FIG.1205	1127-62	.062	.094	-	.235	.179	.219	3000 VRMS
	1127-63	.094	.125	-	.235	.179	.219	
FIG.1210	1127-64	-	.078	2-56	.235	.116	.156	3000 VRMS
	1127-65	-	.117	2-56	.391	.116	.156	
	1127-66	-	.078	2-56	.235	.179	.219	
	1127-67	-	.117	2-56	.391	.179	.219	

TERMINAL: ELECTRO-SOLDER PLATED

U-UNDERCUT AT MANUFACTURERS OPTION

