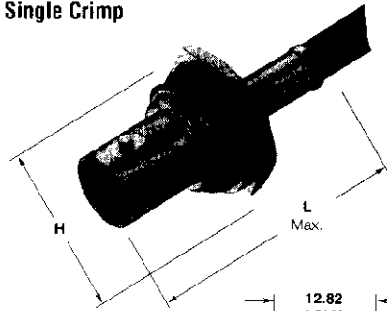


**BNC Connectors, 50 Ohm (Continued)**

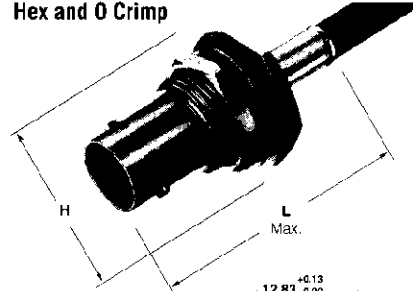
**Bulkhead Jacks, Crimp (Continued)**

Note: Panel Insulating Bushings — Page 54

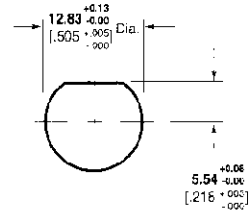
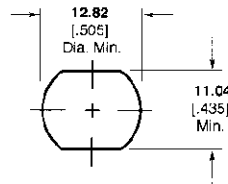
**Single Crimp**



**Hex and O Crimp**



**Recommended Panel Cutouts**  
Maximum Panel Thickness **3.18** [.125]



H = 11/16" across flats, 20.32 [.800] Max. across points

RG/U Cable	Termination Type	Center Contact Plating	Body Plating	Dielectric	Style	Dim. L	CERTI-CRIMP Hand Tool with Integral Die	Interchangeable Dies for PRO-CRIMPER Hand Tool 354940-1 or PRO-CRIMPER Adapter 679304-1	Interchangeable Dies for Hand Tool 69710-1 & 626 Pneu. Head 318161-1	Part No.
58, 58A, 58B, 58C, Belden 88240, Beck-Tek BTDC-56, Comm/Scope 2135	Hex Crimp	Gold	Nickel	Polyethylene	Commercial	<b>36.83</b> 1.450	—	56436-1	—	<b>413771-1</b>
58, 58A, 58B, 58C	O Crimp	Gold	Nickel	Polypropylene	Commercial	<b>34.93</b> 1.375	220187-1	56435-1	220217-1	<b>228980-5</b>
	O Crimp	Gold	Nickel	TEFLON	Mil Type	<b>41.28</b> 1.625	69478-1	220189-3	69727	<b>225398-1</b>
	Single Crimp	Gold	Silver	TEFLON	Mil Type	<b>32.13</b> 1.265	69140-1	—	69223-1	<b>2-329456-1</b>
223, 55, 55A, 55B	O Crimp	Gold	Nickel	TEFLON	Mil Type	<b>35.71</b> 1.406	69478-1	220189-3	69727	<b>225398-3</b>
142, 142A, 142B, 400	O Crimp	Gold	Nickel	TEFLON	Mil Type	<b>35.71</b> 1.406	—	220189-3	69727	<b>225398-6</b>
124, 140, 210, 62, 62A, 62B, 59, 59A, 59B, Belden 9291 9205, 9269	Hex Crimp	Gold	Nickel	Polyethylene	Commercial	<b>36.83</b> 1.450	—	56436-1	—	<b>413771-2</b>
	O Crimp	Gold	Nickel	Polypropylene	Commercial	<b>34.93</b> 1.375	220187-2	56435-1	220217-2	<b>228980-6</b>
	O Crimp	Gold	Nickel	TEFLON	Mil Type	<b>41.28</b> 1.625	69477-1	56537-1	69669-1	<b>225398-2</b>

Order AMP PRO-CRIMPER Coaxial "O" Crimp Hand Tool assembly 58433-1, which includes dies 58435-1.