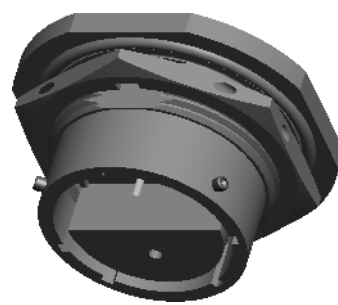


REV. F		SHEET 1 OF 2		71-533720/729	
REVISIONS					
LTR	DESCRIPTION			DATE	
F	(CL11) SEE ECN: B9450			10/13/14 Pratt	



71-533720/729

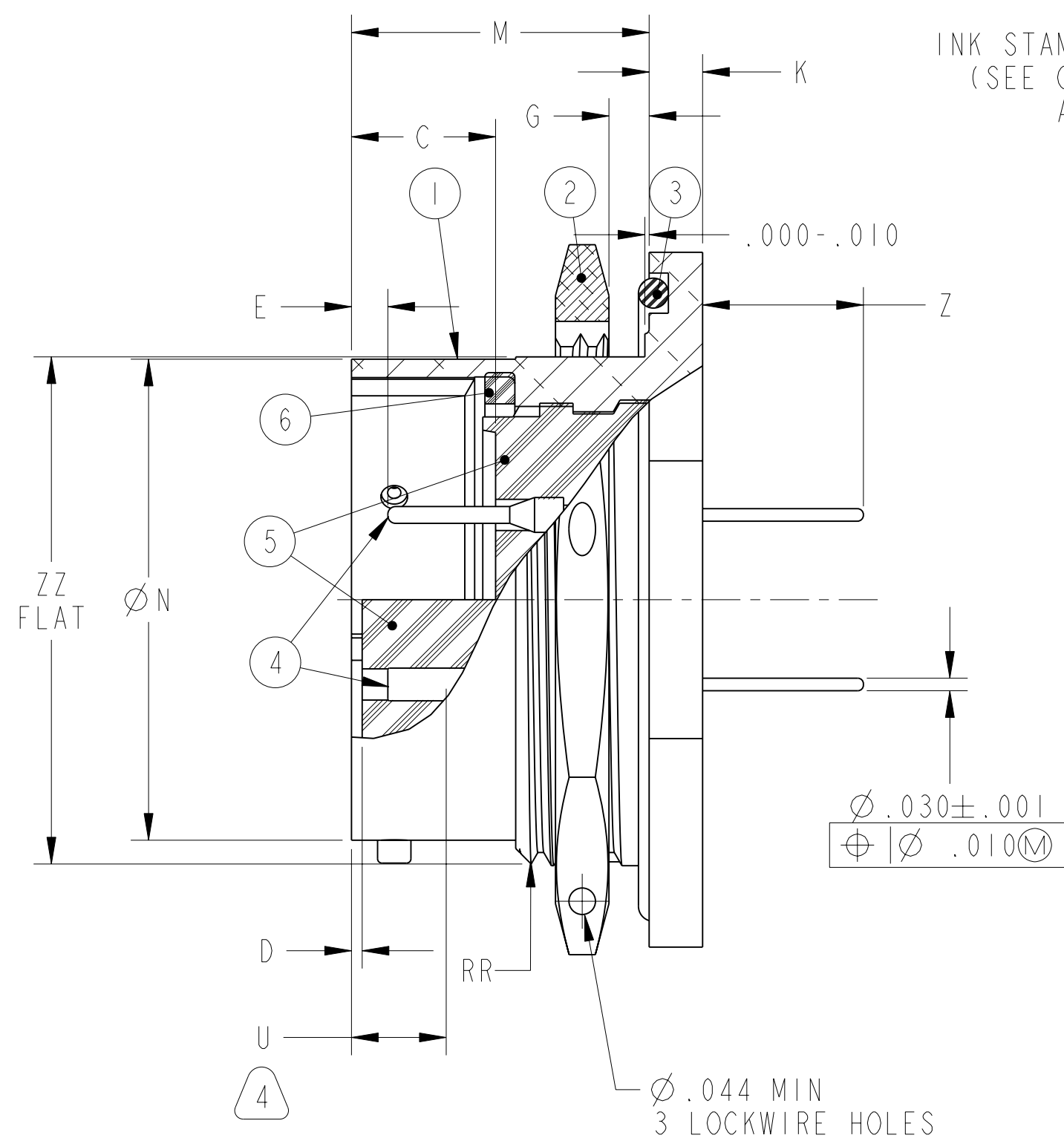
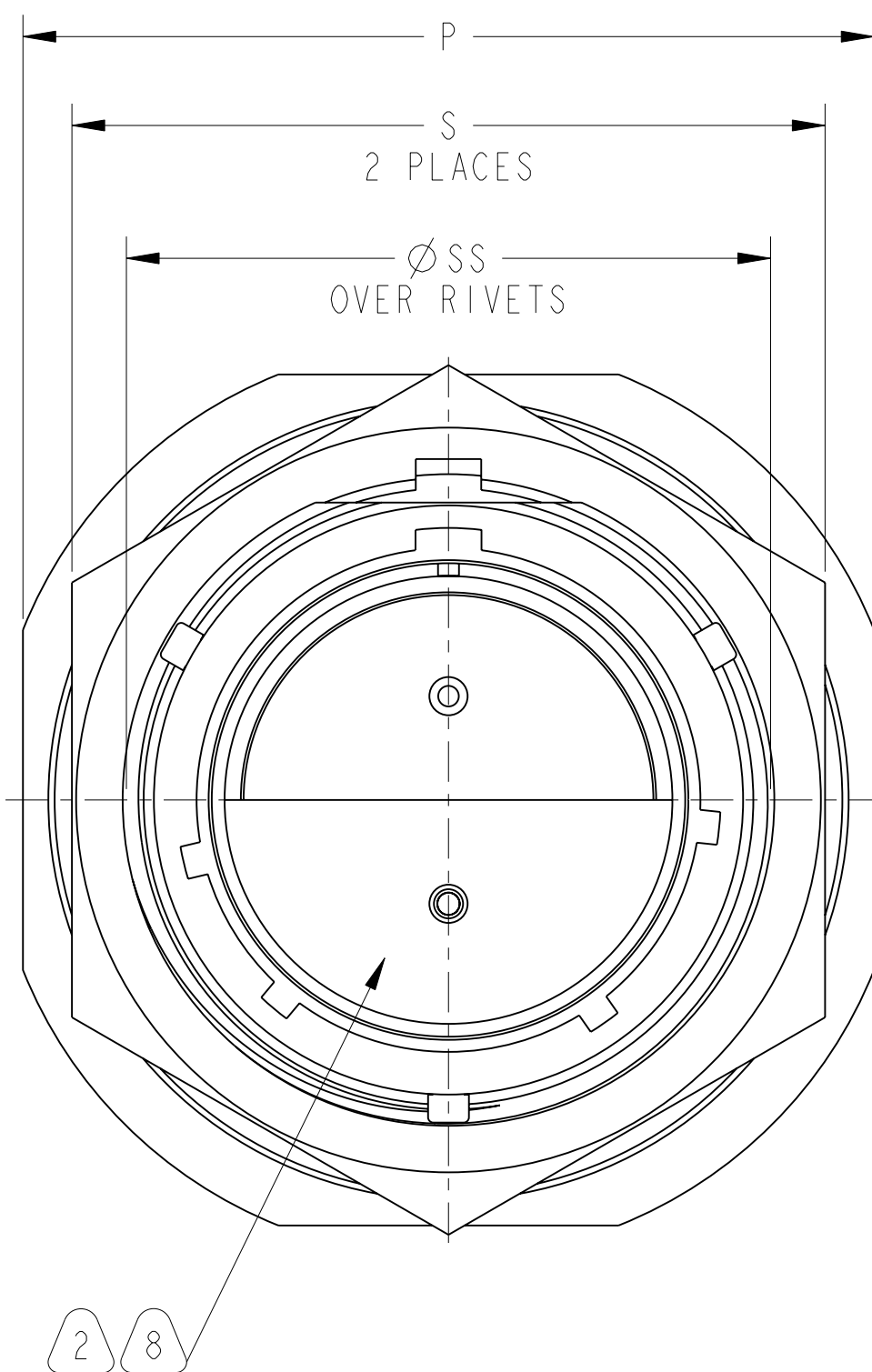
SHEET 1 OF 2

REV. F

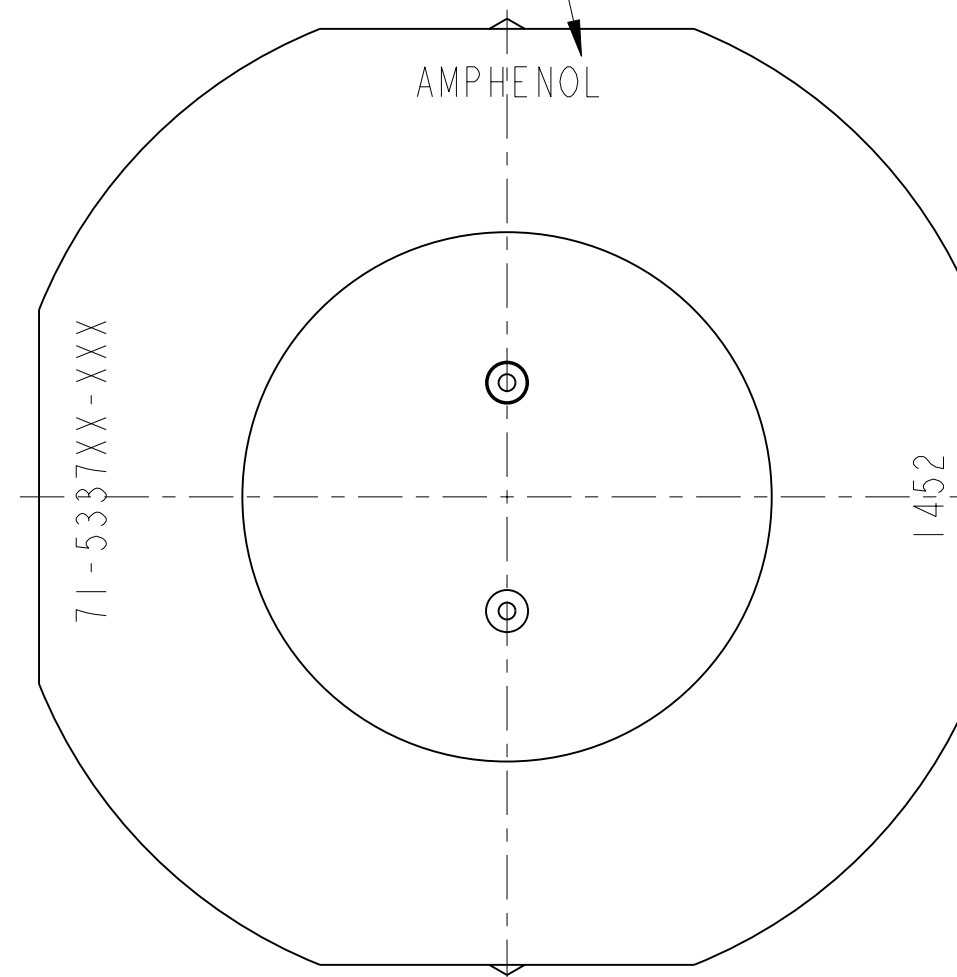
C

B

A



INK STAMP "AMPHENOL", ASSEMBLY NUMBER (SEE COLUMN) AND DATE CODE (9-3895) APPROX .047 HIGH PER 9-3856-5. EXAMPLE: AMPHENOL 71-533728-18P 1452



POS	QTY	PART NUMBER	DESCRIPTION	NOTE
6	1	10-330914-XX1	GASKET	
5	1	10-1018XX-( )P/S	INSERT	8
		10-2528XX-( )P/S		
4		SEE CONTACT TABLE	CONTACTS	2, 8
3		SEE COLUMN	PACKING	9
2		10-123017-XX3	NUT	
1		10-150903-XX3	SHELL	

SEE SHEET 2

NOTES:

THE USE OF THIS DOCUMENT IS UNLIMITED. HOWEVER, DOCUMENTS REFERENCED HEREON MAY CONTAIN LIMITED RIGHTS DATA.

N/A	PRO/ENGINEER INFORMATION
N/A	Pro/e Model Used: 71-5337XXP.S.ASSEM
NEXT ASSEMBLY	Drawing Name: 71-533720-729

UNLESS OTHERWISE SPECIFIED	SPECIFICATIONS
LINEAR DIMENSIONS ARE IN INCHES TOLERANCES: .XXXX = ±.0005 ANGLES= ±2° .XXX = ±.010 .XX = ±.03 .X = ±.1	MATERIAL SPEC. N/A
DIM. & TOL. PER ASME Y14.5M; DRM PER MIL-DTL-31000; OTHER Amphenol Sds. PER 9-3800	PROCESS SPEC. SEE NOTES 9 & 10
LEGENDS: =FLAG NOTE CALL OUT REFERENCE ONLY	

APPROVALS		DATE
PREPARED BY L. Pratt		07-01-14
ENGINEER IN CHARGE A. Prescott		
DESIGN MANAGER A. Polishak		
DESIGN ACTIVITY GROUP C & I		
THIRD ANGLE PROJECTION		

PARTS LIST			
<b>AMPHENOL CORPORATION</b> <small>40-60 DELAWARE AVENUE SIDNEY, N.Y. 13858</small>			
<b>RECEPTACLE, ELECTRICAL CONNECTOR TYPE PT07C(), SPECIAL, OLIVE DRAB CADMIUM PLATED</b>			
SIZE <b>C</b>	CAGE CODE <b>77820</b>	DOCUMENT NO. <b>71-533720/729</b>	REV. <b>F</b>
SCALE: 1.0 REF: 71-147706/750		SHEET 1 OF 2	

ASSEMBLY NUMBER	PT NUMBER	PACKING	C +.010 -.025	D +.010 -.025	E +.010 -.020	G PANEL THICKNESS		K +.011 -.010	M	ØN +.001 -.005	P HEX +.017 -.016	S	U MAX	Z +.025 -.035	RR THREAD (PLATED) CLASS 2A	ØSS +.000 -.016	ZZ +.000 -.010
						MIN	MAX										
71-533720-()	PT07C- 6-()	10-090351-015	.337	.025	.085	.062	.125	.125	.696	.348	.625	.812	.153	.376	.4375-28 UNEF	.439	.405
71-533721-()	PT07C- 8-()	10-090351-017	.337	.025	.085	.062	.125	.125	.696	.473	.750	.938	.153	.376	.5625-24 UNEF	.563	.530
71-533722-()	PT07C-10-()	10-090351-019	.337	.025	.085	.062	.125	.125	.696	.590	.875	1.062	.153	.376	.6875-24 UNEF	.680	.655
71-533723-()	PT07C-12-()	10-090351-022	.337	.025	.085	.062	.125	.125	.696	.750	1.062	1.250	.153	.376	.8750-20 UNEF	.859	.818
71-533724-()	PT07C-14-()	10-090351-024	.337	.025	.085	.062	.125	.125	.696	.875	1.188	1.375	.153	.376	1.0000-20 UNEF	.984	.942
71-533725-()	PT07C-16-()	10-090351-026	.337	.025	.085	.062	.125	.125	.696	1.000	1.312	1.500	.153	.376	1.1250-18 UNEF	1.108	1.066
71-533726-()	PT07C-18-()	10-090351-028	.337	.025	.085	.062	.125	.125	.696	1.125	1.438	1.625	.153	.376	1.2500-18 UNEF	1.233	1.191
71-533727-()	PT07C-20-()	10-090351-128	.399	.087	.147	.062	.250	.156	.884	1.250	1.562	1.812	.215	.367	1.3750-18 UNEF	1.358	1.316
71-533728-()	PT07C-22-()	10-090351-130	.399	.087	.147	.062	.250	.156	.884	1.375	1.688	1.938	.215	.367	1.5000-18 UNEF	1.483	1.441
71-533729-()	PT07C-24-()	10-090351-132	.399	.087	.147	.062	.250	.156	.917	1.500	1.812	2.062	.215	.334	1.6250-18 UNEF	1.610	1.566

3

CONTACTS	
SIZE	PART NUMBER
20L PIN	10-497534-06D
20L SOCKET	10-597859-FFF
20 PIN	10-497512-06D
20 SOCKET	10-664164-FFF OR 10-497513-06D
16L PIN	10-247924-167
16L SOCKET	10-247926-167
16 PIN	10-247920-168
16 SOCKET	10-247922-168
12 PIN	10-733100-05D
12 SOCKET	—

5. SEE DRAWING 71-146606/50 FOR REQUIRED MATING PLUG ASSEMBLY.
4. INDICATED DIMENSION IS DISTANCE BETWEEN END OF SHELL AND THE POINT AT WHICH A GAGE PIN, HAVING THE SAME BASIC DIAMETER AS THE MATING CONTACT AND A SQUARE FACE, ENGAGES SOCKET CONTACT SPRING.
3. TO COMPLETE ASSEMBLY NUMBER AND PT NUMBER, ADD APPLICABLE INSERT ARRANGEMENT SUFFIX TO BASE NUMBERS LISTED ABOVE PER 9-2437-1.
2. FOR CONTACT ARRANGEMENTS, SEE DRAWINGS L-15206/50-().
1. UNIT ILLUSTRATED MEETS THE APPLICABLE REQUIREMENTS OF MIL-C-26482.

10. PROCESS SPEC:  
ASSEMBLY 9-3605-1  
9-2437-1, 9-3856-5, 9-3895  
TEST 9-3353-1
9. FOR MAXIMUM SEALING EFFICIENCY, APPLY A LIGHT COAT OF COMPOUND (MIL-S-8660) TO PACKING.
8. INSERTS AND CONTACTS ARE NOT REMOVABLE.
7. SEE SEPERATE PARTS LIST FOR COMPONENT PART NUMBERS AND QUANTITIES.
6. SEE WORK ORDER FOR PERMISSIBLE ADDITIONAL OR ALTERNATE STAMPING.

NOTES:

THE USE OF THIS DOCUMENT IS UNLIMITED. HOWEVER, DOCUMENTS REFERENCED HEREON MAY CONTAIN LIMITED RIGHTS DATA.

SIZE <b>C</b>	CAGE CODE <b>77820</b>	DOCUMENT NO. <b>71-533720/729</b>	REV. <b>F</b>
SCALE: 1.0	REF. 71-147706/750	SHEET 2 OF 2	

71-533720/729

SHEET 2 OF 2

REV. F

C

B

A

D

C

REV. F

SHEET 2 OF 2

71-533720/729

A