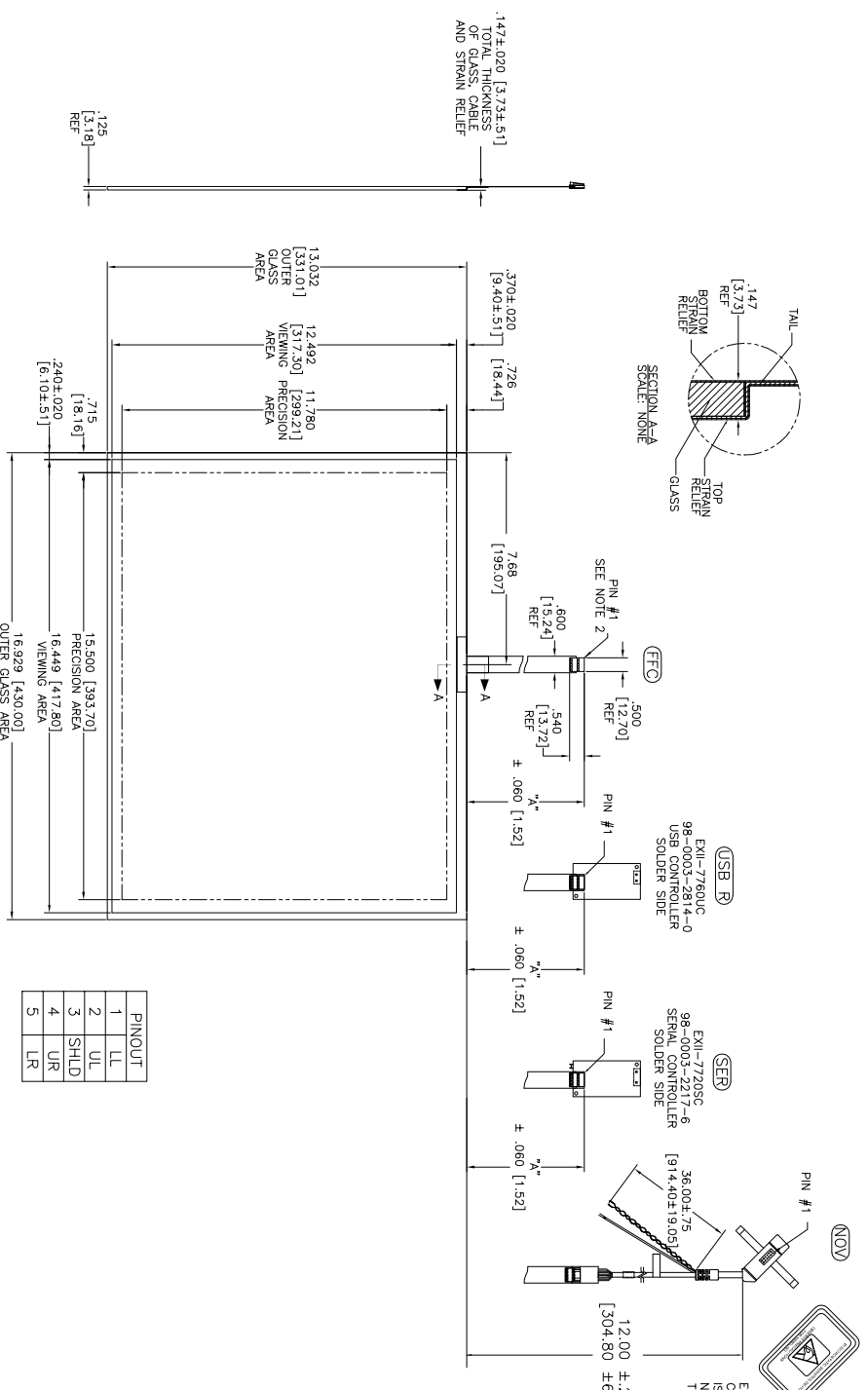


OGA DIAGONAL: 21.36 [542.65]
 VA DIAGONAL: 20.65 [524.63]
 PA DIAGONAL: 19.47 [494.50]

TOP LEVEL NUMBER	US NUMBER	CHINA NUMBER	TYPE	DM # (TOTAL GLASS TO CONNECTOR)	A/G FINISH	PROD. SPEC
17-8441-203	98-0003-2601-1	N/A	FFC	4.22" [108.46]	AG500	23655
17-8441-221	98-0003-2606-0	N/A	SER	6.00" [152.40]	AG500	23655
17-8441-204	98-0003-2981-7	N/A	FFC	6.00" [152.40]	AG500	23655
17-8441-223	98-0003-2607-8	N/A	SER	8.00" [203.20]	AG500	23655
17-8441-227	98-0003-2195-4	59-0000-0136-8	SER	8.00" [203.20]	AG500	23655
17-8441-205	98-0003-2602-9	59-0000-0132-7	FFC	8.00" [203.20]	AG500	23655
17-8441-206	98-0003-2603-7	59-0000-0133-5	NOV	SEE DWG	AG500	23655
17-8441-218	98-0003-3153-2	59-0000-0134-3	USB R	4.22" [108.46]	AG500	23655
17-8441-220	98-0003-3154-0	59-0000-0135-0	USB R	6.00" [152.40]	AG500	23655
17-8441-226	98-0003-3155-7	N/A	USB R	8.00" [203.20]	AG500	23655



PINOUT
1 LL
2 UL
3 SHLD
4 UR
5 LR

NOTES:
 1. WEIGHT OF GLASS IN GRAMS: 1084±10%
 2. NICOMATIC HOUSING P/N: OLOS
 NICOMATIC RECEPTACLES (PINS) MATTE TIN PLATED P/N: 14106-12
 HOUSING ORIENTED WITH LATCH DOWN

UNITS INCHES [MM]
 TOLERANCES UNLESS OTHERWISE SPECIFIED
 X ±.03 [.76]
 .XX ±.015 [.38]
 XXX ±.015 [.38]
 ANGLES ±1°

3M TOUCH SYSTEMS
 3M TOUCH SYSTEMS
 USA
 USA

© COPYRIGHT 2004
 THIS DOCUMENT IS THE UNPUBLISHED PROPERTY OF 3M TOUCH SYSTEMS. NO PART OF THIS DOCUMENT MAY BE REPRODUCED OR TRANSMITTED IN ANY FORM OR BY ANY MEANS WITHOUT THE WRITTEN PERMISSION OF 3M TOUCH SYSTEMS.

DMW K CROWLEY 9/05

MARKETING DRAWING
 SCT32NN 20.65"

REV	DATE	BY	CHK	APP
G	2/12	SB		
F	9/11	SB		
05	5/09	SB		

DO NOT SCALE DRAWING
 1 = 1

SIZE C DOCUMENT NO. 28213-MKT SHEET 1 OF 1 REV G