

2600 SERIES - ILLUMINATED & NON-ILLUMINATED ROCKER SWITCHES



FEATURES

- Broad selection of lamp types and/or rocker colors.
- SPDT & DPDT models with plain, 'V' shaped or concave rocker.
- Illuminated rocker or rocker with illuminated window.
- Screw terminals with clamp or solder lug/quick-connect terminals.

SPECIFICATIONS

Contact ratings (resistive loads):	Silver contacts; ON-OFF and ON-ON: 10(4)A 380VAC -16(6)A 250VAC or 20(6)A 125VAC. Other functions: 10A 250VAC or 15A 125VAC Silver plated copper contacts; All functions: 4A 250VAC or 5A 125VAC	
Agency recognized ratings:	See table below	
Initial contact resistance:	10 milliohms max. at 1A 2VDC	
Insulation resistance:	1000 megohms min. at 500 VDC	
Dielectric strength:	2500 V rms min. - between terminals 3000 V rms min. - between terminals and metal panel	
Electrical life:	10,000 cycles min. at full load	
Operating temperature range:	Silver contacts: -20°C to +125°C	Silver plated contacts: -10°C to +55°C
Panel thickness:	0.8-4mm (.031"-.157")	

AGENCY RECOGNIZED RATINGS		
FUNCTIONS	UL & CSA	VDE
ON-OFF	1/6 HP 125VAC, 16A 125VAC	10(4)A 380VAC, 16(6)A 250VAC &
ON-ON	16A 250VAC & 1/3 HP 250VAC	20(6)A 125VAC
ON-OFF-ON	10A 125VAC, 10A 250VAC & 1/6 HP 125/250VAC	10(4)A 380VAC
OTHERS, CSA ONLY : 10A 125VAC, 10A 250VAC & 1/6 HP 250VAC		

MATERIALS

Contacts & Terminals:	Silver or silver plated copper
Actuator:	Polyamide
Frame:	Polyamide
Case:	Melamine/polyester

AGENCY RECOGNITION



UL, CSA & VDE. Recognized models are supplied with agency markings.

ABOUT THIS SERIES

The material in this series is organized in the following sequence:

- Completely specified switch models
- 'build your own switch' order format
- Option drawings
- Mounting & miscellaneous

ALSO IN THIS SERIES

2600 Series switches for peak currents - for switching power supplies, DC-DC converters, motors, etc. See specifications on last page of completely specified models.

2600 SERIES - ILLUMINATED & NON-ILLUMINATED ROCKER SWITCHES

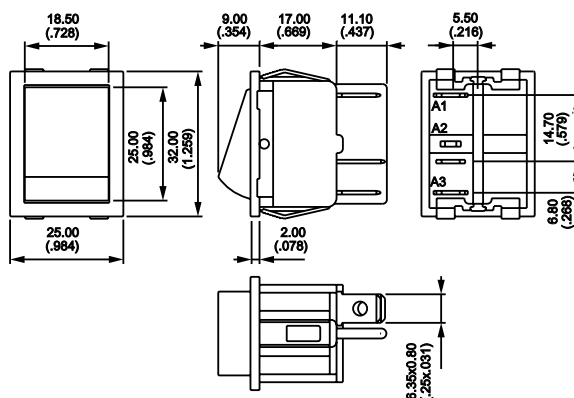
B

Single pole - non-illuminated - black rocker - silver contacts



Screw terminals and clamp	Solder lug/quick-connect terminals	CIRCUIT		
2631LHA212000L0	2631LH/2A212000L0	ON	-	OFF
2636LHA212000L0	2636LH/2A212000L0	ON	-	ON
2639LHA212000L0	2639LH/2A212000L0	ON	OFF	ON
Terminals connected:		A2-A1	A2-A3	

Above models have black frame.

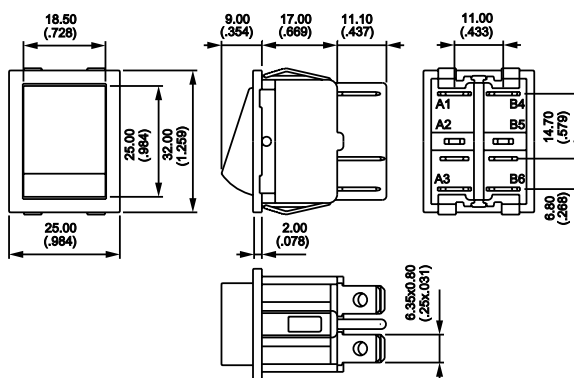


Double pole - non-illuminated - black rocker - silver contacts



Screw terminals and clamp	Solder lug/quick-connect terminals	CIRCUIT		
2641LHA212000L0	2641LH/2A212000L0	ON	-	OFF
2645LHA212000L0	2645LH/2A212000L0	MOM	-	ON
2646LHA212000L0	2646LH/2A212000L0	ON	-	ON
2647LHA212000L0	2647LH/2A212000L0	MOM	OFF	MOM
2648LHA212000L0	2648LH/2A212000L0	ON	OFF	MOM
2649LHA212000L0	2649LH/2A212000L0	ON	OFF	ON
Terminals connected:		A2-A1	A2-A3	
		B5-B4	B5-B6	

Above models have black frame.

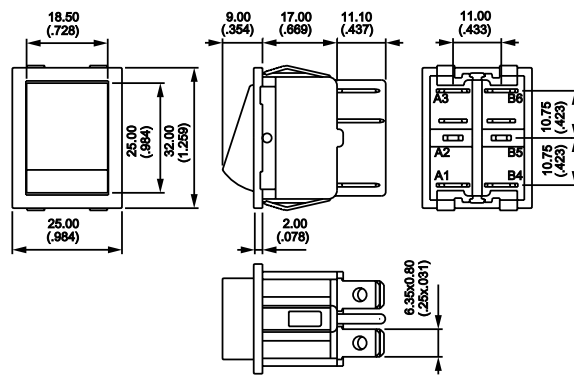


Double pole - illuminated - green rocker - silver contacts



Screw terminals and clamp	CIRCUIT		
2641LHA21300L110V3	ON	-	OFF
2646LHA21300L110V3	ON	-	ON
2649LHA21300L110V3	ON	OFF	ON
Solder lug/quick-connect terminals	CIRCUIT		
2641LH/2A21300L110V3	ON	-	OFF
2646LH/2A21300L110V3	ON	-	ON
2649LH/2A21300L110V3	ON	OFF	ON
Terminals connected:		A2-A1	A2-A3
		B5-B4	B5-B6

Above models have black frame.

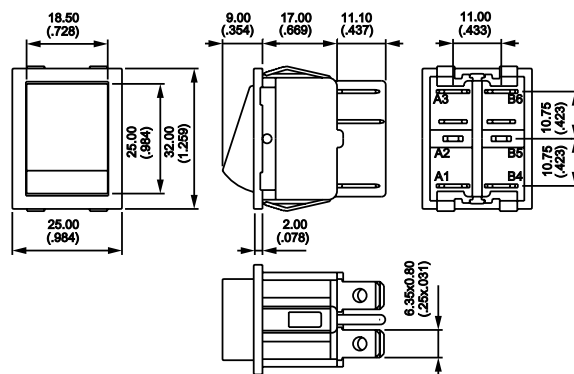


Double pole - illuminated - red rocker - silver contacts



Screw terminals and clamp	CIRCUIT		
2641LHA21600L110V	ON	-	OFF
2646LHA21600L110V	ON	-	ON
2649LHA21600L110V	ON	OFF	ON
Solder lug/quick-connect terminals	CIRCUIT		
2641LH/2A21600L110V	ON	-	OFF
2646LH/2A21600L110V	ON	-	ON
2649LH/2A21600L110V	ON	OFF	ON
Terminals connected:		A2-A1	A2-A3
		B5-B4	B5-B6

Above models have black frame.



SPECIFICATIONS SUBJECT TO CHANGE WITHOUT NOTICE

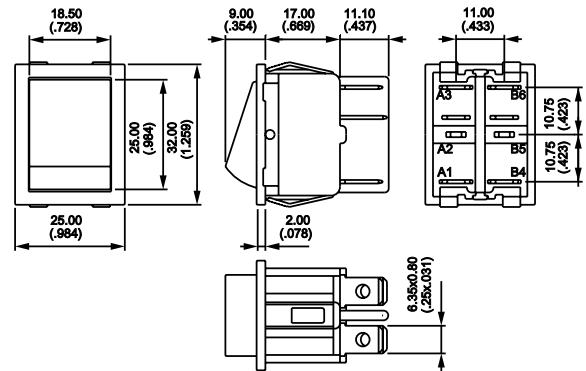
2600 SERIES - ILLUMINATED & NON-ILLUMINATED ROCKER SWITCHES

Double pole - illuminated - amber rocker - silver contacts



Screw terminals and clamp	CIRCUIT		
2641LHA21900L110V	ON	-	OFF
2646LHA21900L110V	ON	-	ON
2649LHA21900L110V	ON	OFF	ON
Solder lug/quick-connect terminals	CIRCUIT		
2641LH/2A21900L110V	ON	-	OFF
2646LH/2A21900L110V	ON	-	ON
2649LH/2A21900L110V	ON	OFF	ON
Terminals connected:	A2-A1 B5-B4	A2-A3 B5-B6	

Above models have black frame.

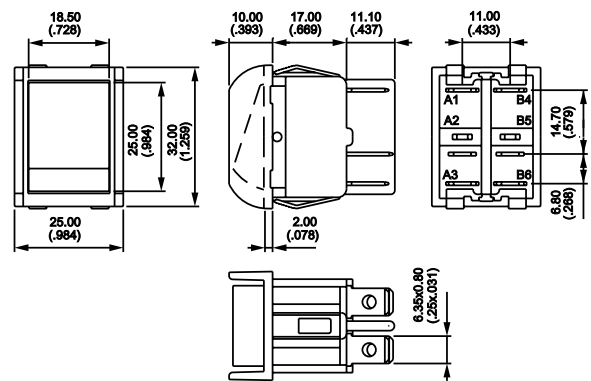


Double pole - illuminated - red rocker - protection guard - silver contacts



Screw terminals and clamp	CIRCUIT		
2641LPA21600L110V	ON	-	OFF
2646LPA21600L110V	ON	-	ON
2649LPA21600L110V	ON	OFF	ON
Solder lug/quick-connect terminals	CIRCUIT		
2641LP/2A21600L110V	ON	-	OFF
2646LP/2A21600L110V	ON	-	ON
2649LP/2A21600L110V	ON	OFF	ON
Terminals connected:	A2-A1 B5-B4	A2-A3 B5-B6	

Above models have black frame.



2600 Series double pole switches for peak currents up to 150 Amps at 250 VAC

Also see 'Switches for Peak Currents' technical page in rear of catalog.

Contacts: Silver cadmium oxide

Maximum ratings:

Capacitive load:

15/150A 125VAC and 250VAC - 5000 cycles
10/150A 125VAC and 250VAC - 10,000 cycles
4/90A (10 ms) 60VDC -10,000 cycles

Motor load:

15(6)A 250VAC - 10,000 cycles. 10(4)A 380VAC - 10,000 cycles
17(6)A 125VAC - 6,000 cycles. 1 HP 250VAC - 10,000 cycles
2 HP 250VAC - 6,000 cycles. 1/2 HP 125VAC - 6,000 cycles
Note - 6(3 A 125VAC means 6A resistive and 3A motor

Lamp Load:

10A 125VAC and 250VAC - 10,000 cycles

Other specifications and dimensions same as previous 2600 Series models - see first page of Series.

To specify models with protection guard, replace **LH** with **LP** in model numbers shown in table.



16A 250VAC - 1/3 HP 250VAC
16A 125VAC - 1/6 HP 125VAC

NON-ILLUMINATED - BLACK ROCKER

Solder lug/quick-connect terminals	Screw terminals	CIRCUIT
2641SLH/2A212000L0	2641SLHA212000L0	ON - OFF
2646SLH/2A212000L0	2646SLHA212000L0	ON - ON

ILLUMINATED 220 VAC (without window)

Solder lug/quick- connect terminals - green rocker	CIRCUIT
2641SLH/2A21300L220V3	ON - OFF
2646SLH/2A21300L220V3	ON - ON

Solder lug/quick- connect terminals - red rocker

2641SLH/2A21600L220V3	ON - OFF
2646SLH/2A21600L220V3	ON - ON

ILLUMINATED 220 VAC (with window)

Solder lug/quick- connect terminals - green rocker	CIRCUIT
2641SLH/2A21300L220V3/3	ON - OFF
2646SLH/2A21300L220V3/3	ON - ON

Solder lug/quick- connect terminals - red rocker

2641SLH/2A21600L220V3/3	ON - OFF
2646SLH/2A21600L220V3/3	ON - ON

New!

2600 SERIES - ILLUMINATED & NON-ILLUMINATED ROCKER SWITCHES

B

Additional ordering information: Commonly ordered models are shown on prior pages with complete model numbers and specifications. Below is an order format that enables you to 'build your own switch' and specify the correct switch model number by simply selecting from all available options shown and filling in the boxes.

'BUILD YOUR OWN SWITCH' ORDER FORMAT

Fill in boxes with selections shown for **Model Structure & Options** for complete model number.

Allowable options are shown below each respective box.

Note 'NONE' indicates box may be left empty.

Model Structure & options:

Series	Number of poles	Electrical functions	Frame type	Terminals	Contact materials	Frame color
2 6						
	3 Single pole	1 ON - OFF	L H Plain	(NONE) Screw & clamp	A Silver	2 Black (Standard)
	4 Double pole	4 ON ON ON*	L P With protection guard	/ 2 Solder lugs/quick-connect	C Silver plated copper	4 Gray
		5 MOM - ON*		/ 3 Normalized quick-connect		7 / 1 White
		6 ON - ON				8 Chrome plated
		7 MOM OFF MOM*				This option has UL approval only
		8 ON OFF MOM*				
		9 ON OFF ON				
		* - double pole only				
						B Light brown
						E Dark brown

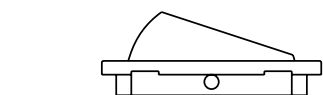
Rocker shape	Rocker color (or no rocker)	Rocker marking (or no marking)	Lamp (or no lamp)	Illuminated window
1 Plain	Select rocker color or 'no rocker' from option table below	Select rocker marking or 'no rocker marking' from option table below	L 0 (NONE) Or, select lamp from option table below	(NONE) / 3 Green / 6 Red This option for black, green and red rockers only. With green, use fluorescent lamp only.
2 'V' shaped				
3 Concave				

Although most combinations of options are available, some may result in incompatibilities. Consult factory if there is any question.

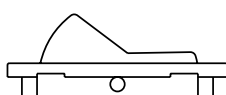
Example of completely specified model number:

2644LH/2AB1300L110V3

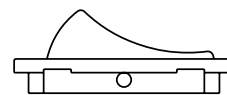
ROCKER SHAPE OPTIONS



1 Plain



2 'V' shaped



3 Concave

ROCKER COLOR OPTIONS

For illuminated rocker (without window):

Rocker color option no.	Without rocker	Blue*	Green*	Yellow	Red	White	Orange
	0	1	3	5	6	7/1	9

* With green or blue rocker, use fluorescent lamp only.

For non-illuminated rocker or rocker with illuminated window**:

** - specify only options 20, 30 or 60 with illuminated window rockers.

Rocker color option no.	Without rocker	Light brown	Dark brown	Beige	Blue	Black
	0	02	04	03	10	20

Rocker color option no.	Green	Gray	Yellow	Red	White	Orange
	30	40	50	60	70	90

SPECIFICATIONS SUBJECT TO CHANGE WITHOUT NOTICE

2600 SERIES - ILLUMINATED & NON-ILLUMINATED ROCKER SWITCHES

ROCKER MARKING OPTIONS

Marking option numbers (for markings and colors shown - consult factory for special marking)

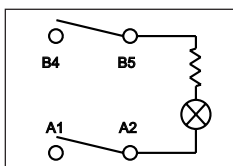
Marking	Marking color	(Below options indicate no marking)	4 1 5 2 6 3	4 1 5 2 6 3	4 1 5 2 6 3	4 1 5 2 6 3	4 1 5 2 6 3	4 1 5 2 6 3
Black	00	01	02	06	07	08		
Red	00	11	12	16	17	18		
White	00	21	22	26	27	28		

Marking	Marking color	4 1 5 2 6 3	3 6 2 5 1 4	4 1 5 2 6 3	4 1 5 2 6 3	4 1 5 2 6 3	4 1 5 2 6 3
Black	-	-	-	40	43*	46	
Red	13	14	15*	41	44*	47	
White	23	24	25*	42	45*	48	

* not available on 'V' shaped rockers

LAMP OPTIONS

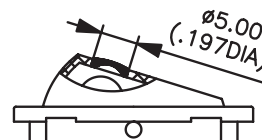
- LO** Non-illuminated switch
- L6V** Filament 6V
- L12V** Filament 12V
- L24V** Filament 24V
- L110V** Neon 110 VAC
- L110V3** Fluorescent green 110 VAC
- L220V** Neon 220 VAC
- L220V3** Fluorescent green 220 VAC
- L380V** Neon 380 VAC
- L380V3** Fluorescent green 380 VAC



For illuminated models, lamp is always connected between center terminals 2 and 5. Lamps L380V and L380V3 are not UL/CSA approved.

ROCKER SWITCH W/ILLUMINATED WINDOW

New!



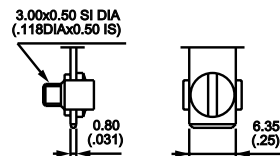
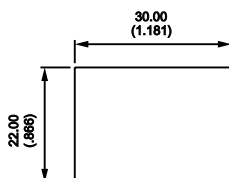
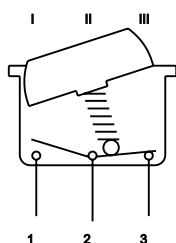
Window colors: red or green

Available with plain, 'V' shaped, or concave rockers

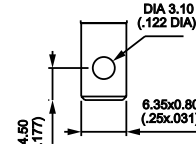
SWITCH ACTION

PANEL CUT-OUT

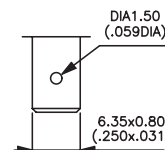
TERMINALS



Standard: Screw & clamp



/2 Solder lug/
quick-connect



/3 Normalized
quick-connect