

VELLEMAN KITS & OSCILLOSCOPES > INSTRUMENTS > PC FUNCTION GENERATORS 0-1MHz >



USB-PC SCOPE + GENERATOR (2CH.)

Order Code: PCSGU250



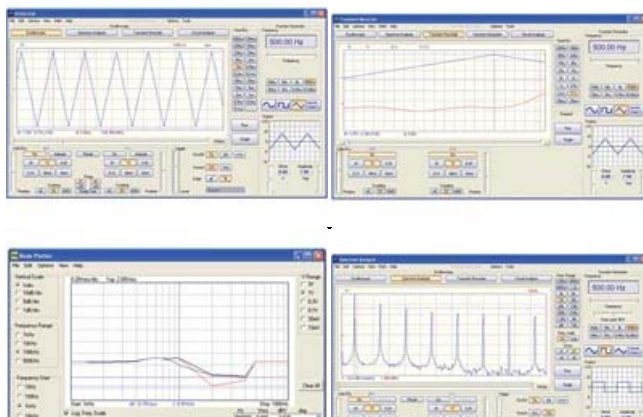
A complete USB-powered lab-in-a-box

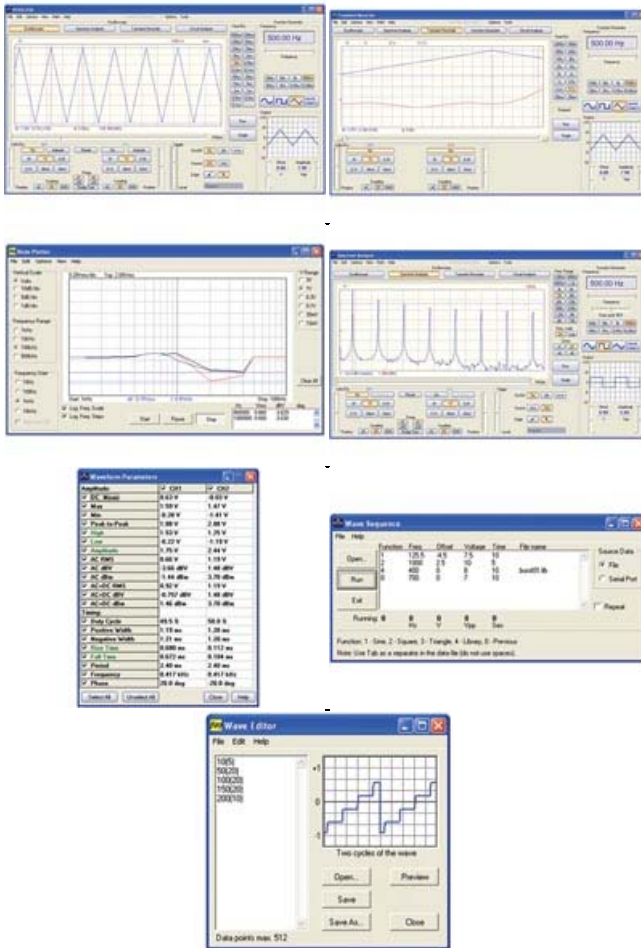
Feature-packed Pclab2000-LT software for two channel oscilloscope, spectrum analyser, recorder, function generator and bode plotter. With the generator, you can create your own waveforms using the integrated signal wave editor. For automated measurements, it is even possible to generate wave sequences, using file or computer RS232 input.

Features

- function generator:
 - crystal-based stability
 - standard waveforms: sine, square and triangle
 - predefined library waveforms included: sine(x)/x, DCV, sweep, ...
- oscilloscope:
 - auto set-up function and X10 option
 - pre-trigger function
 - readouts: True RMS, dBV, dBm, p to p, Duty cycle, Frequency
- transient recorder:
 - automatic storage of data
 - automatic recording for more than 1 year
 - record and display of screens
- bode Plotter:
 - automated sync between oscilloscope and generator
 - logarithmic scale option
 - Volt or dB display scale
 - phase plot option
- spectrum analyser:
 - linear or logarithmic timescale
 - operating principle: FFT (Fast Fourier Transform)
 - FFT input channel: CH1 or CH2
 - zoom function
- in the box:
 - getting started manual
 - USB PC Scope+generator unit
 - USB cable
 - software on CD
 - 1 x 60MHz scope probe (PROBE60S)
 - BNC adapter, BNC male to RCA female (CBNC15)

[More...](#)





Specifications

- general:
 - markers for: amplitude/voltage and frequency/time
 - input coupling: DC, AC and GND
 - Supply from USB port (500mA)
 - dimensions: 8.2 x 2.2 x 7"
- function generator:
 - amplitude range: 100mVpp to 10Vpp @ 1KHz// 600ohm load / 0V offset
 - offset: from 0 to -5V or +5V max. (resolution 0.4% of full scale)
 - vertical resolution: 8 bits
 - square wave rise/fall time: 0.2 μ s
 - sample rate: 12.5MHz
 - typical sine wave distortion (THD): < 1%
 - output impedance: 50ohm
 - frequency range: from 0.005Hz to 500kHz
- oscilloscope:
 - bandwidth: two channels DC to 12 MHz \pm 3dB
 - input impedance: 1 Mohm / 30pF
 - maximum input voltage: 30V (AC + DC)
 - time base: 0.1 μ s to 500ms per division
 - input range: 10mV to 3V/division
 - input sensitivity: 0.3mV display resolution
 - record length: 4K samples / channel
 - sampling frequency: 250Hz to 25MHz
- transient recorder:
 - timescale: 20ms/Div to 2000s/Div
 - max record time: 9.4hour/screen
 - max. number of samples: 100/s
 - min. number of samples: 1 sample/20s
- bode Plotter:
 - voltage range: 10mV, 30mV, 0.1V, 0.3V, 1V, 3V
 - frequency range: 1kHz, 10kHz, 100kHz, 500kHz
 - Frequency start: 10Hz, 100Hz, 1kHz, 10kHz
- spectrum analyser:
 - frequency range: 0 .. 120Hz to 12MHz
 - FFT resolution: 2048 lines
- minimum system requirements:
 - IBM compatible PC
 - Windows[®],[©] 2000, XP, Vista *
 - SVGA display card (min.1024 x 768)
 - mouse
 - free USB port 1.1 or 2.0
 - CD Rom player

Files

- [Velleman Projects Catalogs: Kits](#)
- [Velleman Projects Catalogs: Modules & instruments](#)

- [drivers: USB drivers for Windows 2000/XP/Vista/Windows 7](#)
- [infosheet: English version](#)
- [infosheet: Oscilloscopes cross reference table \(uk\)](#)
- [software: PCSGU250, can be used as demo version \(without PCSGU250\) rev 1.08 \(released on 12/8/2010\)](#)
- [software: Software development kit for PCSGU250, DLL with examples.](#)
- [usermanual Pc-Lab2000 LT \(uk - fr - de - es\)](#)

Stock Info

- Inner carton:
- Outer Carton:
- EAN Barcode: 5410329409975
- Packaging: Box (Carton)

Extra information

- (*) Windows^Å™ is a registered trademarks of Microsoft Corporation

(C) 2005 Velleman Components N.V.
[[Disclaimer](#)]