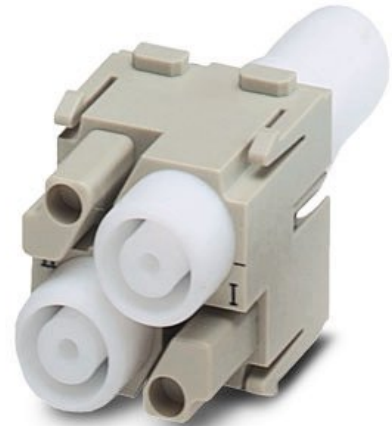




Extract from the online catalog

HC-M-HV-MOD-BU

Order No.: 1604999



<http://eshop.phoenixcontact.de/phoenix/treeViewClick.do?UID=1604999>

HEAVYCON contact insert module, female, 2-pos. to 5000 V, crimp connection

Commercial data	
EAN	4017918893279
Pack	1 pcs.
Customs tariff	85369010
Weight/Piece	0.0604 KG
Catalog page information	Page 453 (PC-2009)

Product notes

WEEE/RoHS-compliant since:
08/17/2006



<http://www.download.phoenixcontact.com>
Please note that the data given here has been taken from the online catalog. For comprehensive information and data, please refer to the user documentation. The General Terms and Conditions of Use apply to Internet downloads.

Technical data

Electrical characteristics

Note	For housing HC-B6 to B48, for housing HC-ADVANCE-B6 to B24, hinged retaining frame HC-M-MHR... necessary, crimp contacts CK2,5-ED... (crimp contacts not in scope of supply)
Rated voltage (III/3)	2900 V (Conductor-PE)
	5000 V (Conductor-Conductor)
Rated current	16 A
Rated surge voltage	15 kV
Ambient temperature (operation)	-40 °C ... 125 °C
Number of positions	2

Mechanical characteristics

Conductor cross section	0.5 mm ² ... 4 mm ²
Connection cross section AWG	20 ... 12
Stripping length of the individual wire	9.5 mm
Wire diameter	2.5 mm
Wire diameter including insulation	8 mm
Insertion/withdrawal cycles	≥ 500

General characteristics

Number of module slots	2
Connection method	Crimp connection
Inflammability class acc. to UL 94	V0
Pollution degree	3
Surge voltage category	III
Assembly instructions	Use HC housing h ≥ 72 mm. Plug-in connections may only be operated only when there is no load/voltage.
Connection	Mounting sequence:- Insert through the locking sleeve.- Strip the 9.5 mm core.- Crimp the core with crimp contact CK2,5...ED.- Snap the locking sleeve and crimp contact together with the insulation body of the module.

Material data

Contact material	Copper alloy
Contact surface material	Ag (alternatively Au)
Contact carrier material	PC / PTFE

Certificates / Approvals

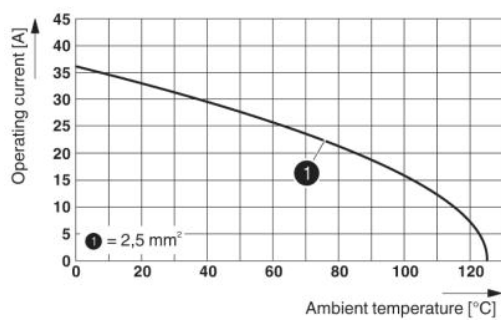


Certification

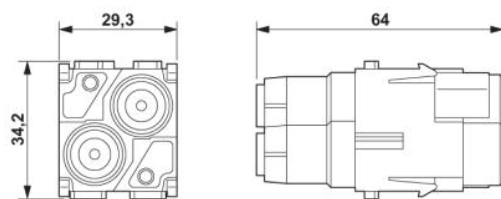
GOST

Diagrams/Drawings

Diagram



Dimensioned drawing



Female insert

HC-M-HV-MOD-BU Order No.: 1604999
<http://eshop.phoenixcontact.de/phoenix/treeViewClick.do?UID=1604999>

Address

PHOENIX CONTACT Deutschland GmbH
Flachmarktstr. 8
32825 Blomberg, Germany
Phone +49 5235 3 12000
Fax +49 5235 3 41200
<http://www.phoenixcontact.de>



© 2010 Phoenix Contact
Technical modifications reserved;

onlinecomponents.com