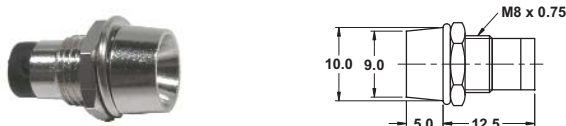


**Chrome plated LED indicator**

These indicators require a resistor to limit current. See note on page 53 for details.

- 55-432-0** Red LED Bulk
- 55-433-0** Green LED Bulk
- 55-434-0** Orange LED Bulk

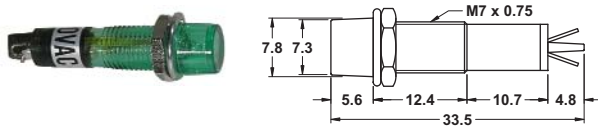
Use -1 for Display Package



**Chrome plated LED holder**

Chrome plated holder for 5mm LEDs. LED is not included.

- 55-439-0** Bulk
- 55-439-1** Pkg.



**Neon indicators (internal resistor) 120VAC**

- 55-442-0** Red lens 120VAC
- 55-443-0** Amber lens 120VAC
- 55-445-0** Green lens 120VAC

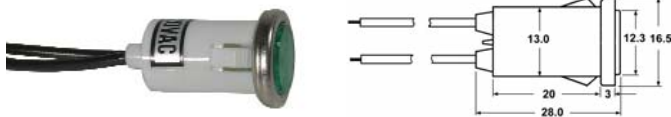
Use -1 for Display Package



**Neon indicators (internal resistor) 120VAC**

- 55-462-0** Red lens 120VAC
- 55-463-0** Amber lens 120VAC
- 55-465-0** Green lens 120VAC

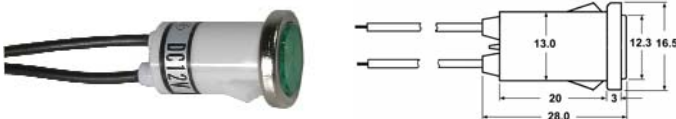
Use -1 for Display Package



**Neon indicators (internal resistor) 120VAC**

- 55-452-0** Red lens 120VAC
- 55-453-0** Amber lens 120VAC
- 55-455-0** Green lens 120VAC

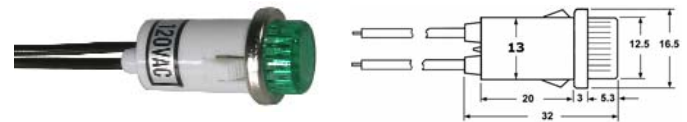
Use -1 for Display Package



**Incandescent indicators 12VDC**

- 55-472-0** Red lens 12VDC
- 55-473-0** Amber lens 12VDC
- 55-475-0** Green lens 12VDC

Use -1 for Display Package



**Neon indicators (internal resistor) 120VAC**

- 55-482-0** Red lens 120VAC
- 55-483-0** Amber lens 120VAC
- 55-485-0** Green lens 120VAC

Use -1 for Display Package



**Incandescent indicators 12VDC and 24VDC**

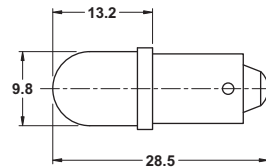
- 55-492-0** Red lens 12VDC
- 55-493-0** Amber lens 12VDC
- 55-495-0** Green lens 12VDC
- 55-496-0** Red lens 24VDC
- 55-497-0** Amber lens 24VDC
- 55-498-0** Green lens 24VDC

Use -1 for Display Package

**LED REPLACEMENT LAMPS**

**T3 1/4 (10mm) Bayonet Base**

Energy efficient, long lasting led replacement bulbs are suitable replacements for T3 1/4 (10mm) Bayonet Base Lamps. They are not affected with high vibration or harsh conditions like incandescent bulbs. These replacement bulbs will operate on either AC or DC voltage.



If = 20mA

Part No.	Color	Volts	MCD
<b>55-110B-0</b>	Blue	6V AC/DC	2800
<b>55-110G-0</b>	Green	6V AC/DC	1300
<b>55-110R-0</b>	Red	6V AC/DC	2000
<b>55-110Y-0</b>	Yellow	6V AC/DC	2000
<b>55-110W-0</b>	White	6V AC/DC	2000
<b>55-111B-0</b>	Blue	12V AC/DC	2800
<b>55-111G-0</b>	Green	12V AC/DC	1300
<b>55-111R-0</b>	Red	12V AC/DC	2000
<b>55-111Y-0</b>	Yellow	12V AC/DC	2000
<b>55-111W-0</b>	White	12V AC/DC	2000
<b>55-112B-0</b>	Blue	24V AC/DC	2800
<b>55-112G-0</b>	Green	24V AC/DC	1300
<b>55-112R-0</b>	Red	24V AC/DC	2000
<b>55-112Y-0</b>	Yellow	24V AC/DC	2000
<b>55-112W-0</b>	White	24V AC/DC	2000

**7V Max**

**15V Max**

**32V Max**

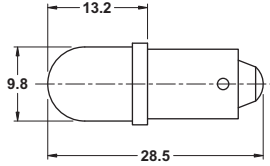
Use -1 for Display Package

**LED replacement lamps continued on next page**

## LED REPLACEMENT LAMPS

### T3 1/4 (10mm) Bayonet Base

Energy efficient, long lasting led replacement bulbs are suitable replacements for T3 1/4 (10mm) Bayonet Base Lamps. They are not affected with high vibration or harsh conditions like incandescent bulbs. These replacement bulbs will operate on either AC or DC voltage.



If = 20mA

Part No.	Color	Volts	MCD
55-113B-0	Blue	120V AC/DC	2800
55-113G-0	Green	120V AC/DC	1300
55-113R-0	Red	120V AC/DC	2000
55-113W-0	White	120V AC/DC	2000
55-113Y-0	Yellow	120V AC/DC	2000

Use -1 for Display Package

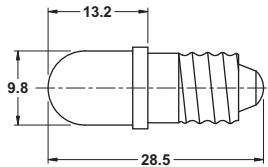
130V Max

### T3 1/4 (10mm) Screw Base

These LED lamps are suitable long life replacements for T3 1/4 screw base lamps. The bottom contact is the anode (+) and the screw sleeve is the cathode. With internal resistor for the specified voltage



If = 20mA



Part No.	Color	Volts	MCD
55-120B-0	Blue	6VDC	2800
55-120G-0	Green	6VDC	1300
55-120R-0	Red	6VDC	2000
55-120Y-0	Yellow	6VDC	2000
55-120W-0	White	6VDC	2000
55-121B-0	Blue	12VDC	2800
55-121G-0	Green	12VDC	1300
55-121R-0	Red	12VDC	2000
55-121W-0	White	12VDC	2000
55-122B-0	Blue	24VDC	2800
55-122G-0	Green	24VDC	1300
55-122Y-0	Yellow	24VDC	2000
55-122W-0	White	24VDC	2000

—

7V Max

—

15V Max

—

32V Max

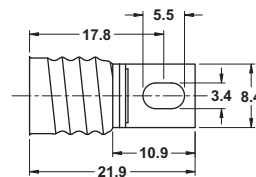
Use -1 for Display Package

## E10 (T3 1/4) SCREW BASE SOCKETS



55-200-0  
55-200-4

Bulk  
Pkg (4)



55-201-0  
55-201-3

Bulk  
Pkg (3)

With right angle mounting tab.

## E10 (T3 1/4) BAYONET BASE SOCKETS

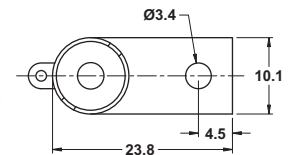


55-202-0  
55-202-3

Bulk  
Pkg (3)

55-203-0  
55-203-3

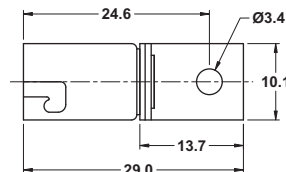
Bulk  
Pkg (3)



With straight mounting tab.

55-204-0  
55-204-3

Bulk  
Pkg (3)

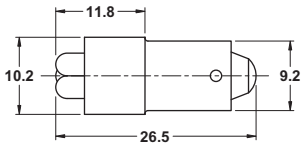


With right angle mounting tab.

**SUPER BRIGHT LED REPLACEMENT LAMPS**

**T3 1/4 (10mm) Bayonet Base**

These LED lamps are suitable long life replacements for T3 1/4 bayonet base lamps. With internal resistor for the specified voltage



**\*Important Note:** This series of LED bulbs are suitable for AC or DC voltage.

Part No.	Color	Volts	MCD	If
55-211B-0	Blue	12V*	4500	32mA
55-211G-0	Green	12V*	17000	32mA
55-211R-0	Red	12V*	21000	32mA
55-211Y-0	Yellow	12V*	21000	32mA
55-211W-0	White	12V*	10000	32mA
55-212G-0	Green	24V*	17000	20mA
55-212R-0	Red	24V*	21000	20mA
55-212Y-0	Yellow	24V*	21000	20mA
55-212W-0	White	24V*	10000	20mA

15V Max

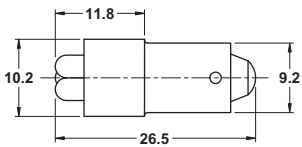
32V Max

Use -1 for Display Package

**SUPER BRIGHT 120VAC/DC LED REPLACEMENT LAMPS**

**T3 1/4 (10mm) Bayonet Base**

These LED lamps are suitable long life replacements for T3 1/4 bayonet base lamps. With internal resistor for the specified voltage



If = 4.8mA

Part No.	Color	Volts	MCD
55-214B-0	Blue	120V*	800
55-214G-0	Green	120V*	3000
55-214R-0	Red	120V*	3500
55-214Y-0	Yellow	120V*	3500
55-214W-0	White	120V*	1800

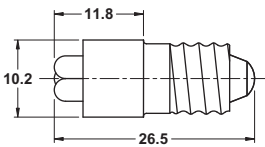
120V Max

Use -1 for Display Package

**\*Important Note:** This series of LED bulbs are suitable for AC or DC voltage.

**T3 1/4 (10mm) Screw Base**

These LED lamps are suitable long life replacements for T3 1/4 screw base lamps. With internal resistor for the specified voltage



If = 4.8mA

Part No.	Color	Volts	MCD
55-224W-0	White	120V*	1800

120V Max

Use -1 for Display Package

**\*Important Note:** This series of LED bulbs are suitable for AC or DC voltage.

**MODE ELECTRONICS LTD.**  
211 - 2999 UNDERHILL AVE.,  
BURNABY, B.C., CANADA, V5A 3C2  
Phone: 604-435-6633  
Fax: 604-435-8890  
Toll Free: 1-800-663-4992  
Web Site: www.mode-elec.com

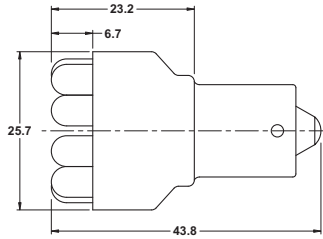
Visit our Web Site at  
<http://www.mode-elec.com>

## SUPER BRIGHT LED CLUSTER, SINGLE AND DUAL CONTACT, REPLACEMENT LAMPS

Replaces 1156 bulb



Consists of 12 LED's



These LED lamps are suitable long life replacements for 15mm bayonet base lamps. The bottom contact is the anode (+) and the bayonet sleeve is the cathode. With internal resistor for 12VDC.

Part No.	Color	Volts	LM	MCD	If
55-256R-0	Super Red	12V	9.5	7500	80mA
55-256G-0	Ultra Green	12V	20.0	21500	80mA
55-256W-0	Super White	12V	15.0	10800	80mA

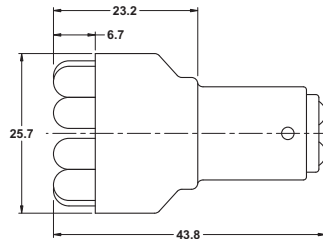
Use -1 for Display Package

14V Max

Replaces 1157 bulb



Consists of 12 LED's



These LED lamps are suitable long life replacements for 15mm bayonet base, dual contact lamps. With internal resistor for 12VDC

Part No.	Color	Volts	LM	MCD	If
55-257R-0	Super Red	12V	8.0/1.8	7500	80/25mA
55-257Y-0	Super Yellow	12V	9.5/2.2	8800	80/25mA

Use -1 for Display Package

14V Max

All LED's (excluding the LED indicator lamps with internal resistor) require a resistor in series to limit the current to the required specification (usually 20mA). Use Ohm's law to calculate the value of the resistor required. Most LED's have a voltage drop of 2 volts. Blue & white LED's are 3.5 - 4 volts.

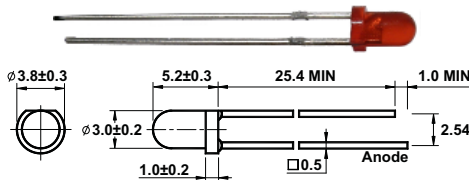
$$V=IR \text{ (volts = current(amps) } \times \text{ resistance)}$$

For a 12VDC supply voltage @ 20mA the required resistor would be:

$$10 \text{ (volts)} / .02 \text{ (amps)} = 500 \text{ ohms}$$

**LED'S ARE SUITABLE FOR DC ONLY**

### 3mm LED'S



### STANDARD 3mm LED'S

Brightness rating @ 10mA

55-532-0	Red	4MCD
55-533-0	Red	35MCD
55-534-0	Yellow	6MCD
55-535-0	Green	15MCD

Use -5 for Display Package

### HIGH BRIGHTNESS 3mm LED'S

Brightness rating @ 20mA

55-532HB-0	Red	150MCD
55-534HB-0	Yellow	1200MCD
55-535HB-0	Green	3000MCD
55-536HB-0	White	1200MCD

Use -3 for Display Package

### SUPER BRIGHT 3mm LED'S

Brightness rating @ 20mA

55-532SB-0	Red	1800MCD
55-534SB-0	Yellow	2000MCD
55-535SB-0	Green	4000MCD
55-536SB-0	White	1800MCD
55-537SB-0	Blue	2000MCD
55-540SB-0	Pink	1800MCD

Use -1 for Display Package

### EXTRA BRIGHT 3mm LED'S

Brightness rating @ 20mA

55-532XB-0	Red	5000MCD
55-534XB-0	Yellow	4000MCD
55-535XB-0	Green	5000MCD
55-536XB-0	White	2400MCD
55-537XB-0	Blue	3500MCD

Use -1 for Display Package

### ULTRA BRIGHT 3mm LED'S

Brightness rating @ 20mA

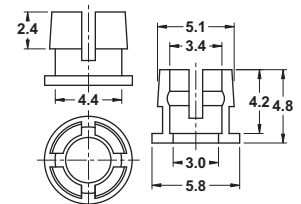
55-532UB-0	Red	7000MCD
55-535UB-0	Green	8000MCD
55-536UB-0	White	6000MCD
55-537UB-0	Blue	4500MCD

Use -1 for Display Package

### 3mm MOUNTING BEZEL



3mm plastic mounting bezel (1 piece)

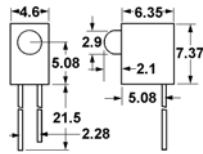


55-530-0 Bulk  
55-530-10 Disp. Pkg. (10)

LED's continued on next page.

We have many different types of LED's available on special order. If you have a requirement, please contact Mode or your local Distributor for details and order quantities.

**3mm R/A LED'S**

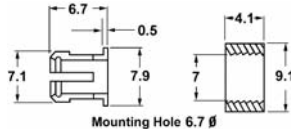


Brightness level @ 10mA

- 55-542-0** Red 3.2MCD
- 55-545-0** Green 15MCD

Use -5 for Display Package

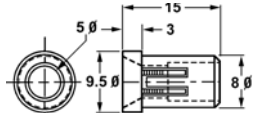
**5mm LED HOLDER**



Plastic 2 piece panel mount holder for 5mm LED's.

- 55-550-0** Bulk
- 55-550-10** Display Package (10)

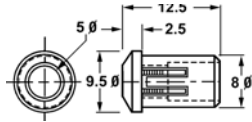
**5mm LED HOLDER (concave)**



Plastic 1 piece panel mount holder for 5mm LED's.

- 55-550A-0** Bulk
- 55-550A-4** Display Package (4)

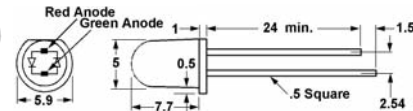
**5mm LED HOLDER (convex)**



Plastic 1 piece panel mount holder for 5mm LED's.

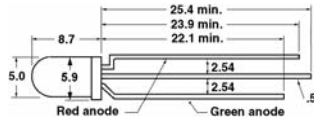
- 55-550B-0** Bulk
- 55-550B-4** Display Package (4)

**BI-COLOR LED'S**



2-lead dual color LED

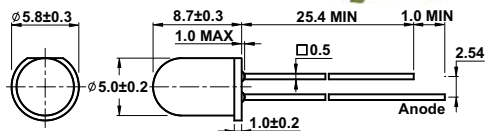
- 55-582-0** Red/Green 2.2/3.5MCD
- 55-582-5** Display Package (5)



3-lead dual color LED

- 55-592-0** Red/Green 2.2/2.5MCD
- 55-592-5** Display Package (5)

**5mm LED'S**



**STANDARD 5mm LED's**

5mm LED's Brightness rating @ 10mA

- 55-552-0** Red 5MCD
- 55-553-0** Orange 10MCD
- 55-554-0** Yellow 30MCD
- 55-555-0** Green 30MCD
- 55-558-0** Blue 40MCD
- 55-558-1** Display Package
- 55-561-0** Violet 3MCD
- 55-561-2** Display Package (2)

Use -5 for Display Package-except 55-558 and 55-561

**HIGH BRIGHTNESS 5mm LED'S**

Brightness rating @ 20mA

- 55-556-0** Red 2000MCD
- 55-556-5** Display Package (5)
- 55-555HB-0** Green 1000MCD
- 55-558HB-0** Blue 2500MCD
- 55-559HB-0** White 2000MCD

Use -1 for Display Package-except 55-556

**SUPER BRIGHT 5mm LED'S**

Brightness rating @ 20mA

- 55-557-0** Red 2500MCD
- 55-557-2** Display Package (2)
- 55-554SB-0** Yellow 3000MCD
- 55-554SB-2** Display Package (2)
- 55-555SB-0** Green 10000MCD
- 55-555SB-1** Display Package
- 55-558SB-0** Blue 3500MCD
- 55-558SB-1** Display Package
- 55-559SB-0** White 3000MCD
- 55-559SB-1** Display Package
- 55-560SB-0** Pink 2000MCD
- 55-560SB-2** Display Package (2)

**EXTRA BRIGHT 5mm LED'S**

Brightness rating @ 20mA

- 55-552XB-0** Red 7000MCD
- 55-554XB-0** Yellow 3500MCD
- 55-555XB-0** Green 11000MCD
- 55-558XB-0** Blue 4500MCD
- 55-559XB-0** White 5500MCD
- 55-559XB-2** Display Package (2)

Use -3 for Display Package-except 55-559XB

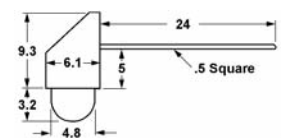
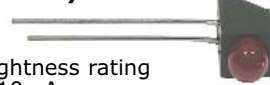
**ULTRA BRIGHT 5mm LED'S**

Brightness rating @ 20mA

- 55-552UB-0** Red 14000MCD
- 55-554UB-0** Yellow 8000MCD
- 55-555UB-0** Green 23000MCD
- 55-558UB-0** Blue 5500MCD
- 55-559UB-0** White 20000MCD
- 55-559UB-2** Display Package (2)

Use -3 for Display Package-except 55-559XB

**5mm R/A LED'S**

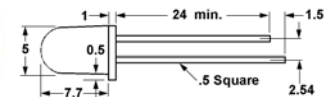


Brightness rating @ 10mA

- 55-562-0** Red 3.2MCD
- 55-564-0** Yellow 5.0MCD

Use -5 for Display Package

**5mm FLASHING LED**

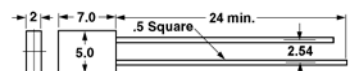


5mm flashing LED. Requires no external circuitry.

- 55-572-0** Red 1000MCD (3 - 5VDC)
- 55-572-2** Display Package (2)
- 55-573-0** Red 18MCD (3.5 - 14VDC)
- 55-573-2** Display Package (2)



**RECTANGULAR LED'S**



2 x 5mm rectangular LED'S

- 55-603-0** Orange 4.5MCD
- 55-604-0** Yellow 3.5MCD

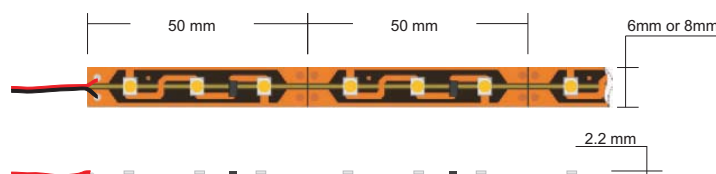
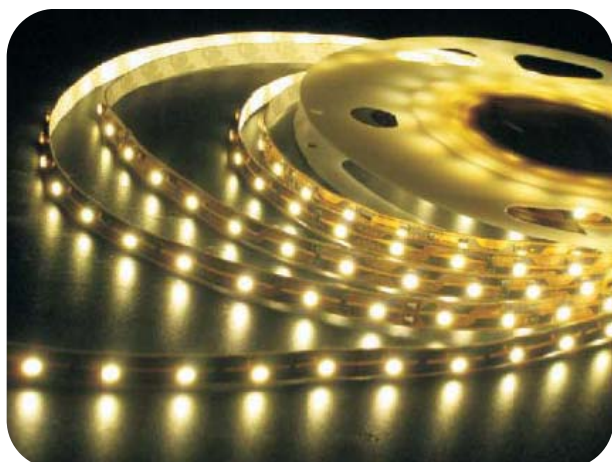
Use -5 for Display Package

## INDOOR SERIES - BARE PCB LED STRIPS

Input Voltage: DC 12V Regulated  
 Forward Current: 0.4A per 1m (60 pcs LED Strip)  
 Power Dissipation: 4.8W per 1m (60 pcs LED Strip)  
 Non-Waterproof IP20: 2 - Protected against solid objects up to 12mm<sup>3</sup>, 0 - No protection  
 Operating Temperature: -20°C ~ 50°C

Very bright & low power consumption.  
 Long life span LED lights, more than 50,000 hours.  
 Adhesive back, peel & stick. Ideal for sign letters and channel letters, concealed lights, room lighting

Part Number	Length [m] / LED [PCS]	Material Type	Emitted Color	Lumen / meter	Dominant Wavelength [nm]	Color Temperature [CCT]	View Angle
55-7030B-0	0.5 / 30	InGaN	Blue	150	470	n/a	120
55-7030G-0	0.5 / 30	InGaN	Green	240	525	n/a	120
55-7030R-0	0.5 / 30	AlGaInP	Red	120	625	n/a	120
55-7030Y-0	0.5 / 30	AlGaInP	Yellow	120	590	n/a	120
55-7030W-0	0.5 / 30	InGaN	White	390	n/a	6000	120
55-7030WW-0	0.5 / 30	InGaN	Warm White	360	n/a	3300	120
55-7060B-0	1 / 60	InGaN	Blue	150	470	n/a	120
55-7060G-0	1 / 60	InGaN	Green	240	525	n/a	120
55-7060R-0	1 / 60	AlGaInP	Red	120	625	n/a	120
55-7060Y-0	1 / 60	AlGaInP	Yellow	120	590	n/a	120
55-7060W-0	1 / 60	InGaN	White	390	n/a	6000	120
55-7060WW-0	1 / 60	InGaN	Warm White	360	n/a	3300	120
55-70300B-0	5 / 300	InGaN	Blue	150	470	n/a	120
55-70300G-0	5 / 300	InGaN	Green	240	525	n/a	120
55-70300R-0	5 / 300	AlGaInP	Red	120	625	n/a	120
55-70300Y-0	5 / 300	AlGaInP	Yellow	120	590	n/a	120
55-70300W-0	5 / 300	InGaN	White	390	n/a	6000	120
55-70300WW-0	5 / 300	InGaN	Warm White	360	n/a	3300	120



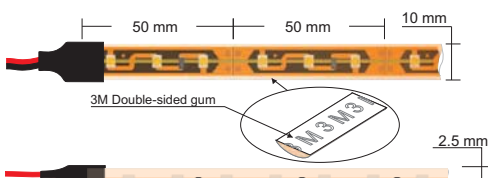
**SILICONE COATED SERIES LED STRIPS**

Input Voltage: DC 12V Regulated  
 Forward Current: 0.4A per 1m (60 pcs LED Strip)  
 Power Dissipation: 4.8W per 1m (60 pcs LED Strip)  
 Waterproof IP65: 6 - Totally protected against dust, 5 - Protected against low pressure jets of water from all directions - limited ingress permitted  
 Operating Temperature: -20°C ~ 50°C

Very bright & low power consumption. Long life span LED lights, more than 50,000 hours. Adhesive back, peel & stick.

Part Number	Length [m] / LED [PCS]	Material Type	Emitted Color	Lumen / meter	Dominant Wavelength [nm]	Color Temperature [CCT]	View Angle
55-7130B-0	0.5 / 30	InGaN	Blue	150	470	n/a	120
55-7130G-0	0.5 / 30	InGaN	Green	240	525	n/a	120
55-7130R-0	0.5 / 30	AlGaInP	Red	120	625	n/a	120
55-7130Y-0	0.5 / 30	AlGaInP	Yellow	120	590	n/a	120
55-7130W-0	0.5 / 30	InGaN	White	390	n/a	6000	120
55-7130WW-0	0.5 / 30	InGaN	Warm White	360	n/a	3300	120
55-7160B-0	1 / 60	InGaN	Blue	150	470	n/a	120
55-7160G-0	1 / 60	InGaN	Green	240	525	n/a	120
55-7160R-0	1 / 60	AlGaInP	Red	120	625	n/a	120
55-7160Y-0	1 / 60	AlGaInP	Yellow	120	590	n/a	120
55-7160W-0	1 / 60	InGaN	White	390	n/a	6000	120
55-7160WW-0	1 / 60	InGaN	Warm White	360	n/a	3300	120
55-71300B-0	5 / 300	InGaN	Blue	150	470	n/a	120
55-71300G-0	5 / 300	InGaN	Green	240	525	n/a	120
55-71300R-0	5 / 300	AlGaInP	Red	120	625	n/a	120
55-71300Y-0	5 / 300	AlGaInP	Yellow	120	590	n/a	120
55-71300W-0	5 / 300	InGaN	White	390	n/a	6000	120
55-71300WW-0	5 / 300	InGaN	Warm White	360	n/a	3300	120
55-7130RGB-0 *	5 / 150	n/a	RGB (Multi)	R: 60 G: 120 B: 75	n/a	n/a	120
55-7160RGB-0 *	5 / 300	n/a	RGB (Multi)	R: 120 G: 240 B: 150	n/a	n/a	120

\* RGB Multi Color. DMX compatible. RGB Controller is required (55-725-0)



**NEW! RGB CONTROLLER**

- 9 pattern adjustable controller
- Rated current: 8A
- Rated load current: 8A x 3CHANNEL
- Working Voltage: 12VDC
- Working temperature: -20°C ~ 60°C
- Size: 107x65x24mm

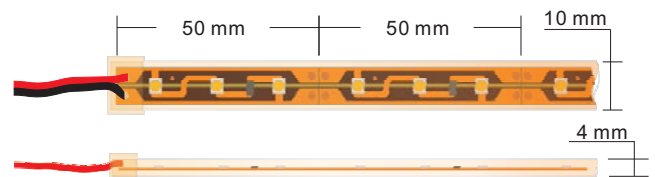
55-725-0

## SILICONE SLEEVE SERIES LED STRIPS

Input Voltage: DC 12V Regulated  
 Forward Current: 0.4A per 1m (60 pcs LED Strip)  
 Power Dissipation: 4.8W per 1m (60 pcs LED Strip)  
 Waterproof IP67: 6 - Totally protected against dust, 7 - Protected against the effect of immersion between 15cm and 1m  
 Operating Temperature: -20°C ~ 50°C

Very bright & low power consumption. Long life span LED lights, more than 50,000 hours.

Part Number	Length [m] / LED [PCS]	Material Type	Emitted Color	Lumen / meter	Dominant Wavelength [nm]	Color Temperature [CCT]	View Angle
<b>55-7230B-0</b>	<b>0.5 / 30</b>	InGaN	Blue	150	470	n/a	120
<b>55-7230G-0</b>	<b>0.5 / 30</b>	InGaN	Green	240	525	n/a	120
<b>55-7230R-0</b>	<b>0.5 / 30</b>	AlGaInP	Red	120	625	n/a	120
<b>55-7230Y-0</b>	<b>0.5 / 30</b>	AlGaInP	Yellow	120	590	n/a	120
<b>55-7230W-0</b>	<b>0.5 / 30</b>	InGaN	White	390	n/a	6000	120
<b>55-7230WW-0</b>	<b>0.5 / 30</b>	InGaN	Warm White	360	n/a	3300	120
<b>55-7260B-0</b>	<b>1 / 60</b>	InGaN	Blue	150	470	n/a	120
<b>55-7260G-0</b>	<b>1 / 60</b>	InGaN	Green	240	525	n/a	120
<b>55-7260R-0</b>	<b>1 / 60</b>	AlGaInP	Red	120	625	n/a	120
<b>55-7260Y-0</b>	<b>1 / 60</b>	AlGaInP	Yellow	120	590	n/a	120
<b>55-7260W-0</b>	<b>1 / 60</b>	InGaN	White	390	n/a	6000	120
<b>55-7260WW-0</b>	<b>1 / 60</b>	InGaN	Warm White	360	n/a	3300	120
<b>55-72300B-0</b>	<b>5 / 300</b>	InGaN	Blue	150	470	n/a	120
<b>55-72300G-0</b>	<b>5 / 300</b>	InGaN	Green	240	525	n/a	120
<b>55-72300R-0</b>	<b>5 / 300</b>	AlGaInP	Red	120	625	n/a	120
<b>55-72300Y-0</b>	<b>5 / 300</b>	AlGaInP	Yellow	120	590	n/a	120
<b>55-72300W-0</b>	<b>5 / 300</b>	InGaN	White	390	n/a	6000	120
<b>55-72300WW-0</b>	<b>5 / 300</b>	InGaN	Warm White	360	n/a	3300	120



**End Cap and Clip for 55-72X and 55-73X Series**



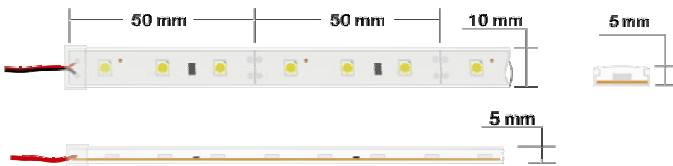


**SILICONE ENCAPSULATED SERIES LED STRIPS**

Input Voltage: DC 12V Regulated  
 Forward Current: 0.4A per 1m (60 pcs LED Strip)  
 Power Dissipation: 4.8W per 1m (60 pcs LED Strip)  
 Waterproof IP68: 6 - Totally protected against dust, 8 - Protected against long periods of immersion under pressure  
 Operating Temperature: -20°C ~ 50°C

Very bright & low power consumption. Long life span LED lights, more than 50,000 hours.

Part Number	Length [m] / LED [PCS]	Material Type	Emitted Color	Lumen / meter	Dominant Wavelength [nm]	Color Temperature [CCT]	View Angle
55-7330B-0	0.5 / 30	InGaN	Blue	150	470	n/a	120
55-7330G-0	0.5 / 30	InGaN	Green	240	525	n/a	120
55-7330R-0	0.5 / 30	AlGaInP	Red	120	625	n/a	120
55-7330Y-0	0.5 / 30	AlGaInP	Yellow	120	590	n/a	120
55-7330W-0	0.5 / 30	InGaN	White	390	n/a	6000	120
55-7330WW-0	0.5 / 30	InGaN	Warm White	360	n/a	3300	120
55-7360B-0	1 / 60	InGaN	Blue	150	470	n/a	120
55-7360G-0	1 / 60	InGaN	Green	240	525	n/a	120
55-7360R-0	1 / 60	AlGaInP	Red	120	625	n/a	120
55-7360Y-0	1 / 60	AlGaInP	Yellow	120	590	n/a	120
55-7360W-0	1 / 60	InGaN	White	390	n/a	6000	120
55-7360WW-0	1 / 60	InGaN	Warm White	360	n/a	3300	120
55-73300B-0	5 / 300	InGaN	Blue	150	470	n/a	120
55-73300G-0	5 / 300	InGaN	Green	240	525	n/a	120
55-73300R-0	5 / 300	AlGaInP	Red	120	625	n/a	120
55-73300Y-0	5 / 300	AlGaInP	Yellow	120	590	n/a	120
55-73300W-0	5 / 300	InGaN	White	390	n/a	6000	120
55-73300WW-0	5 / 300	InGaN	Warm White	360	n/a	3300	120



**End Cap and Clip for 55-72X and 55-73X Series**



**LED STRIP DIMMER**



- Single color LED Strips Dimmer (not for 55-7130RGB-0 or 55-7160RGB-0)
- Maximum up to 18A current output
- Working Voltage:12VDC
- Working temperature: -20°C ~ 60°C
- Size: 107x55x24mm
- Sturdy aluminum frame

55-724-0