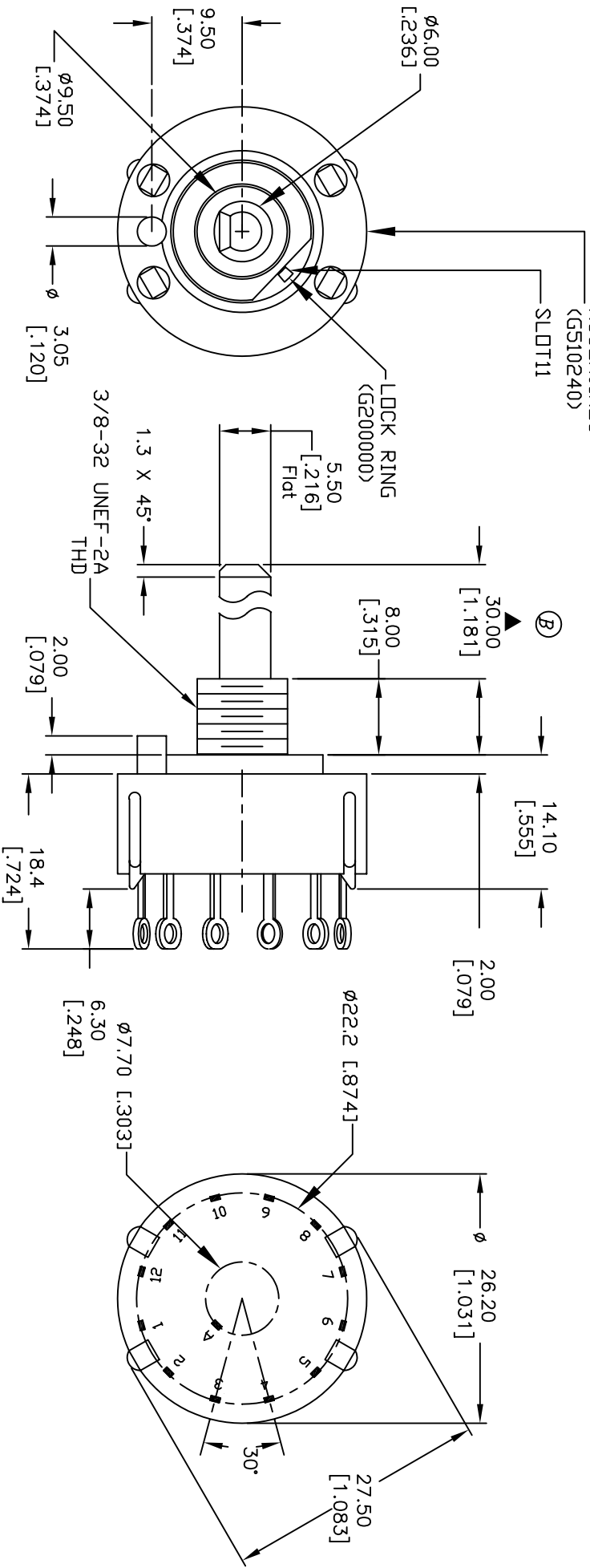
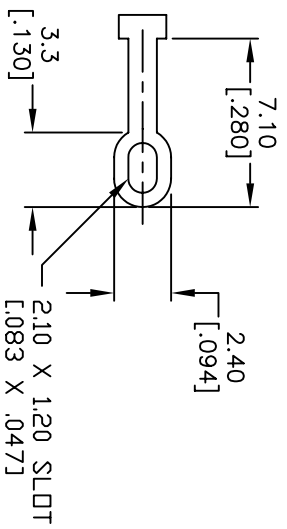
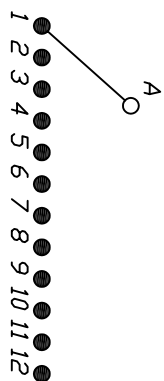


NOTES:

1. ALL DIMENSION IN MM [INCH]
2. GENERAL TOLERANCE: X.X=±0.4
X.XX=±0.25
3. TERM. NOS. FOR REF. ONLY
4. CONTACT RATING SWITCHING: 150mA, 250V AC/DC
350mA, 110V AC/DC
5. CONTACT RATING (NON-SWITCHING) 5A
6. OPERATING FORCE: 425±100 CM/STANDARD
7. OPERATING TEMP: -30° to 85°C
8. CIRCUIT SP: 11 POSITIONS, 30° INDEX, NOTE THIS IS
A KC52 (12 POSITION) WITH LOCKRING INCLUDED.
9. DIELECTRIC STRENGTH 1000V RMS min. @ SEA LEVEL
10. DESIGNATE MAJOR DIMENSIONS
11. LOCK NUT AND WASHER NOT SHOWN.
12. LOCK RING SUPPLIED WITH LOCKRING TAB IN SLOT 11.



D	17352	FIXED NOTE NUMBER 8	6/6/07	TN	TITLE KC52A30.001NLS WITH LOCKRING	SCALE 1.5:1	DATE 6/6/07	DR TN	DWG XG0003P	REV D
C	17213	REACTIVATED, UPDATED	4/23/07	TN						
B	12173	REVISED PART DESCRIPTION	5/21/02	CJB						
A	11923	RELEASED FOR PRODUCTION	2/14/02	CJB						
REV.	ECN NO.	DESCRIPTION	DATE	CHKD						

THE INFORMATION CONTAINED IN THIS DOCUMENT IS PROPRIETARY TO E-SWITCH AND IS NOT TO BE COPIED OR TRANSFERRED

E-SWITCH™