

# SK Series

20, 30 and 40 Amp  
High Performance K Series  
RFI Power Line Filters



UL Recognized  
CSA Certified  
VDE Approved

## SK Series

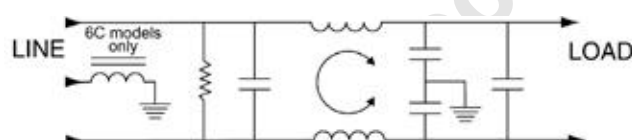
This series of RFI filters was designed to reduce conducted noise to acceptable limits for equipment that must comply with the FCC specifications in the USA and CISPR specifications in Europe.

The SK (Super K) series filters offer significantly higher performance than the K series, which makes this series particularly suited for equipment with high line-to-ground as well as line-to-line conducted emissions.

The ESK models meet the very low leakage current requirements of SEV, VDE portable equipment and (120 Volt) UL544 nonpatient medical equipment.

Models ESK6C and VSK6C additionally incorporate a separate ground-circuit inductor to isolate the equipment chassis from power line ground at RF frequencies.

## Electrical Schematic



Resistor location for reference only.



## Specifications

	VSK Models	ESK Models
Maximum leakage current, each line-to-ground		
@ 120 VAC 60 Hz:	0.75 mA	0.3 mA
@ 250 VAC 50 Hz:	1.25 mA	0.5 mA

Hipot rating (one minute):		
line-to-ground		2250 VDC
line-to-line		1450 VDC

Operating frequency:		50/60 Hz
----------------------	--	----------

Rated voltage:		120/250 VAC
----------------	--	-------------

Rated current:	@120 VAC	@ 250 VAC
20ESK/20VSK	20A	16A
30ESK/30VSK	30A	25A
40VSK	40A	36A

Minimum insertion loss in dB:  
Line-to-ground in 50 ohm circuit

Frequency MHz	VSK 20A	VSK 30A	VSK 40A	ESK 20A	ESK 30A
.01	7	2	2	7	2
.08	23	13	15	22	13
.10	25	14	18	24	15
.15	29	15	22	28	15
.5	43	27	40	35	27
1	44	31	43	38	31
5	48	46	45	45	40
10	48	51	50	45	41
30	48	39	30	45	36

Line-to-line in 50 ohm circuit

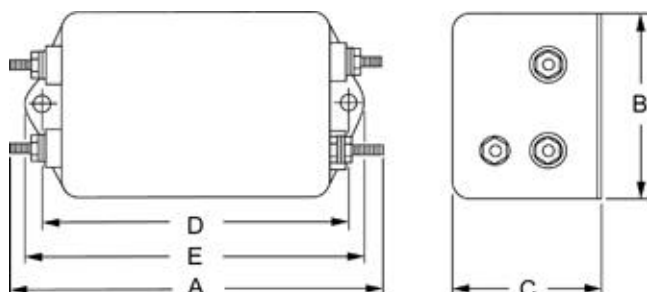
Frequency MHz	VSK 20A	VSK 30A	VSK 40A	ESK 20A	ESK 30A
.01	1	5	7	1	5
.08	10	13	14	10	12
.10	8	13	16	8	12
.15	8	13	30	8	13
.5	45	60	65	45	60
1	60	60	65	60	60
5	65	51	65	65	51
10	60	43	57	60	43
30	60	43	50	60	43

# Series SK

## Case Styles

Metric shown in italics.

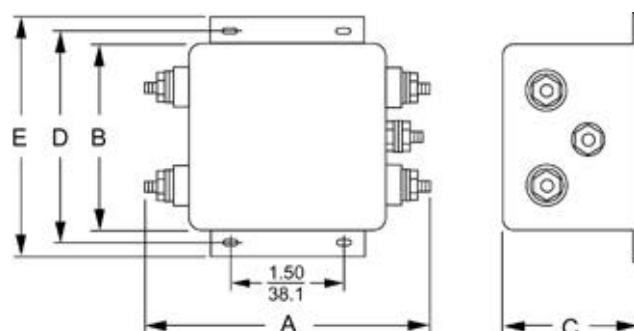
### 20ESK6 & 20VSK6



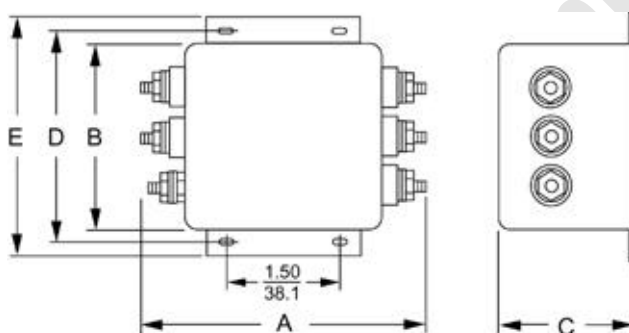
Holes:  $\frac{.187}{4.75}$  Terminals: No. 8-32

Torque  $18 \pm 2$  in.lb.

### 30ESK6 & 30VSK6



### 30ESK6C & 30VSK6C

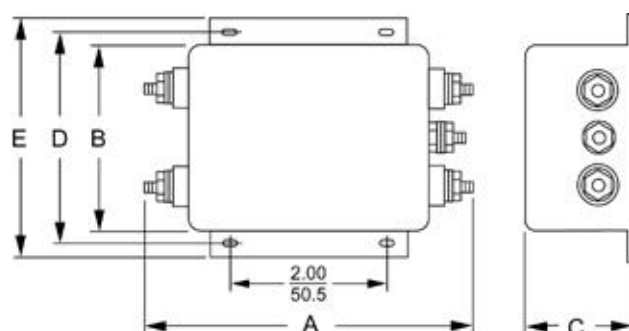


Mounting slots:  $\frac{.250 \times .156}{6.35 \times 3.96}$

Terminals: 10-32

Torque  $27 \pm 3$  in.lb.

### 40VSK6



Mounting slots:  $\frac{.203 \times .156}{5.16 \times 3.96}$

Terminals: 10-32

Torque  $27 \pm 3$  in.lb.

## Case Dimensions

Metric shown in italics.

Part No.	A (max)	B (max)	C (max)	D $\pm .015$ $\pm .38$	E (max)
----------	------------	------------	------------	------------------------------	------------

20ESK6, 20VSK6	5.09 127.3	2.25 57.2	1.78 45.2	4.063 103.2	4.46 129.3
-------------------	---------------	--------------	--------------	----------------	---------------

Part No.	A (max)	B (max)	C (max)	D $\pm .020$ $\pm .51$	E (max)
----------	------------	------------	------------	------------------------------	------------

30ESK6, 30ESK6C	4.92 125.0	3.12 79.25	2.75 69.85	3.437 87.3	4.0 101.6
--------------------	---------------	---------------	---------------	---------------	--------------

30VSK6, 30VSK6C	4.92 125.0	3.12 79.25	2.75 69.85	3.437 87.3	4.0 101.6
--------------------	---------------	---------------	---------------	---------------	--------------

40VSK6	6.0 152.4	3.12 79.25	2.18 55.4	3.5 88.9	3.96 100.6
--------	--------------	---------------	--------------	-------------	---------------

## Ordering Information

Consult your local Corcom sales representative for pricing.

### Available Part Numbers

20ESK6	30VSK6
20VSK6	30VSK6C
30ESK6	40VSK6
30ESK6C	

Line Cord No. GA400