

BANANA JACKS

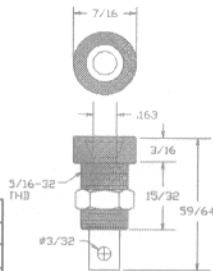
09-9125-1-044XX BANANA PANEL JACK FINISH COLOR INSULATED

RATED FOR 15 AMPERES
CONTINUOUS DUTY

Accepts standard banana plugs.
Mounts in 5/16" round hole in panel up to
5/16" thick. Available in colors (see color
chart at bottom of page).



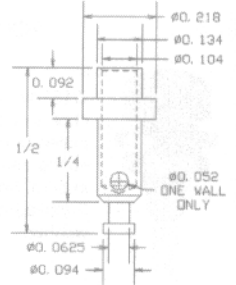
COMPONENT	MATERIAL	(044) FINISH
Contact	Brass	Bright-Tin
Insulation	Nylon	-
Nut	Brass	Nickel



01-2510-1-044 BANANA JACK MINIATURE

RATED FOR 15 AMPERES
CONTINUOUS DUTY

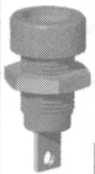
Accepts miniature banana plug. Body is
bright tin plated brass and is heat
treated to facilitate swaging.



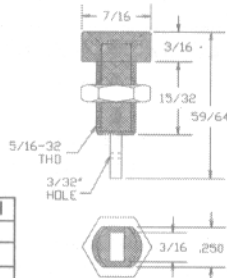
09-9126-1-044XX BANANA PANEL JACK FINISH COLOR INSULATED

RATED FOR 15 AMPERES
CONTINUOUS DUTY

Accepts standard banana plugs.
Mounts in 5/16" round or double "D" hole
in panel up to 5/16" thick. Available in colors
(see color chart at bottom of page).



COMPONENT	MATERIAL	(044) FINISH
Contact	Brass	Bright-Tin
Insulation	Nylon	-
Nut	Brass	Nickel



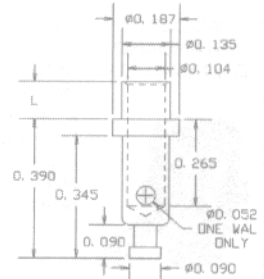
01-2515-X-044 BANANA JACK

RATED FOR 15 AMPERES
CONTINUOUS DUTY

Accepts miniature banana plugs.
Body is bright tin plated brass and is
heat treated to facilitate swaging.



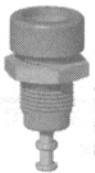
Part no.	L	Panel
01-2515-2	.105	1/16
01-2515-3	.135	3/32
01-2515-4	.165	1/8



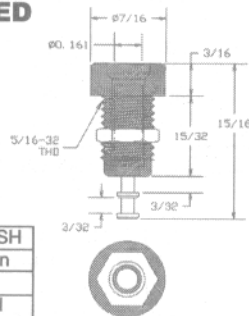
09-9135-1-044XX BANANA PANEL JACK FINISH COLOR INSULATED

RATED FOR 15 AMPERES
CONTINUOUS DUTY

Accepts standard banana plugs.
Mounts in 5/16" round hole in panel up
to 5/16" thick. Available in colors (see
color chart at bottom of page).



COMPONENT	MATERIAL	(044) FINISH
Contact	Brass	Bright-Tin
Insulation	Nylon	-
Nut	Brass	Nickel



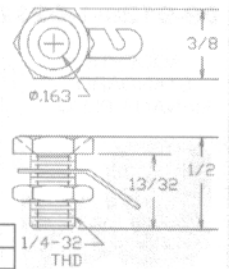
01-2540-1-02 BANANA JACK

RATED FOR 15 AMPERES
CONTINUOUS DUTY

Accepts standard banana plugs.
Fits in 1/4" mounting hole.
Accommodates panel up to 5/16"
thick.



COMPONENT	MATERIAL	(02) FINISH
Body	Brass	Nickel
Lug	Brass	Electro-Tin
Nut	Brass	Nickel



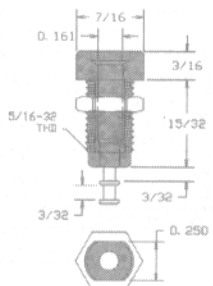
09-9136-1-044XX BANANA PANEL JACK FINISH COLOR INSULATED

RATED FOR 15 AMPERES
CONTINUOUS DUTY

Accepts standard banana plugs.
Mounts in 5/16" round or double "D"
hole in panel up to 5/16" thick. Available
in colors (see color chart at bottom of
page).



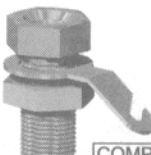
COMPONENT	MATERIAL	(044) FINISH
Contact	Brass	Bright-Tin
Insulation	Nylon	-
Nut	Brass	Nickel



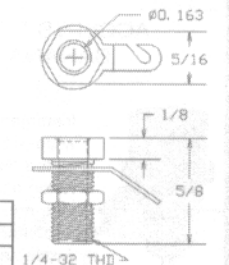
01-2542-1-02 BANANA JACK

RATED FOR 15 AMPERES
CONTINUOUS DUTY

Accepts standard banana plugs.
Fits in 1/4" mounting hole.
Accommodates panel up to 3/8"
thick.



COMPONENT	MATERIAL	(02) FINISH
Body	Brass	Nickel
Lug	Brass	Electro-Tin
Nut	Brass	Nickel



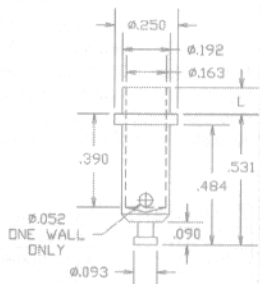
01-2520-X-044 BANANA JACK - SWAGE MOUNT

RATED FOR 15 AMPERES
CONTINUOUS DUTY

Accepts standard banana plugs.
Body is bright tin plated brass and is
heat treated to facilitate swaging.



Part no.	L	Panel
01-2520-2	.105	1/16
01-2520-3	.135	3/32
01-2520-4	.165	1/8



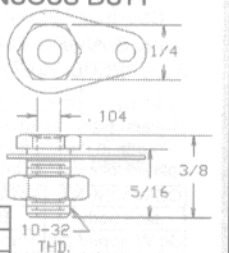
01-2405-1-02 BANANA JACK - MINIATURE

RATED FOR 15 AMPERES CONTINUOUS DUTY

Accepts miniature banana plugs.
Fits in .196" mounting hole.
Accommodates panel up to 1/8"
thickness.



COMPONENT	MATERIAL	(02) FINISH
Body	Brass	Nickel
Lug	Brass	Electro-Tin
Nut	Brass	Nickel



FOR ADDITIONAL SIZES AND MATERIALS, CONTACT FACTORY

BLK	BRN	RED	ORN	YEL	GRN	BLU	PUR	GRY	WHT
10	11	12	13	14	15	16	17	18	19

e-mail : info@concord-elex.com
800-847-4162 (outside N.Y.S.)
212-777-6571 • fax. 212-995-0161

