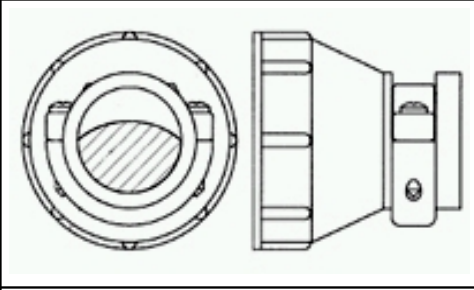


## 213904 -3 Product Details

**Live Product Chat** US Only  
8:30am - 5pm ET, Mon - Fri



**213904 -3**

✓ [Active](#)

### CPC Accessories

[Always EU RoHS/ELV Compliant](#) ( [Statement of Compliance](#) )

#### Product Highlights:

- ? Cable Clamp
- ? Shell Size = 17
- ? Body Style = Straight
- ? Cable Diameter (Max.) = 11.51 mm
- ? Nylon Cable Clamp Material

[View all Features](#) | [Find Similar Products](#)

### Quick Links

- [Check Pricing & Availability](#)
- [Search for Tooling Product Feature Selector](#)
- [Contact Us About This Product](#)

### Documentation & Additional Information

#### Product Drawings:

- ? [CABLE CLAMP KIT, STANDARD, UNASSEMBLED, SIZE 17, CPC](#) (PDF, English)

#### Catalog Pages/Data Sheets:

- ? None Available

#### Product Specifications:

- ? None Available

#### Application Specifications:

- ? None Available

#### Instruction Sheets:

- ? None Available

#### CAD Files: ( [CAD Format & Compression Information](#) )

- ? [2D Drawing](#) (DXF, Version O1)
- ? [3D Model](#) (IGES, Version O1)
- ? [3D Model](#) (STEP, Version O1)

[List all Documents](#)

#### Additional Information:

- ? [Product Line Information](#)

#### Additional Product Images:

- ? [Product Usage](#)
- ? [Product Usage](#)
- ? [Product Usage](#)

#### Related Products:

- ? [Tooling](#)

### Product Features (Please use the Product Drawing for all design activity)

#### Product Type Features:

- ? [Product Type](#) = Cable Clamp
- ? [Shell Size](#) = 17
- ? [Body Style](#) = Straight
- ? Thread Size = 15/16 -20

#### Body Related Features:

- ? [Cable Diameter \(Max.\) \(mm \[in\]\)](#) = 11.51 [0.453]
- ? [Cable Clamp Material](#) = Nylon
- ? [Cover](#) = Without
- ? Cable Clamp Color = Black
- ? Cable Clamp Flammability Rating = UL94V -1

#### Industry Standards:

- ? [RoHS/ELV Compliance](#) = RoHS compliant, ELV compliant
- ? [Lead Free Solder Processes](#) = Not relevant for lead free process
- ? RoHS/ELV Compliance History = Always was RoHS compliant

#### Packaging Related Features:

- ? [Packaging Method](#) = Individual

#### Other:

- ? Brand = AMP