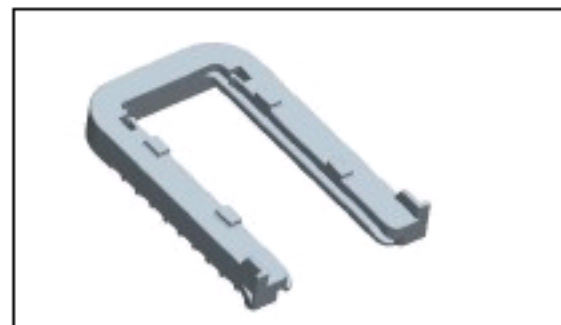


2112045-1 Product Details

Share Print Email



2112045-1

TE Internal Number: 2112045-1

Active

Multiple Contact Point (MCP) & MCON Contact Systems

Always EU RoHS/ELV Compliant (Statement of Compliance)

Product Highlights:

- Multiple Contact Point (MCP) Product Line
- Wire-to-Wire
- Accessory
- Accessory Type = Fixing Slide
- Connector System = LEAVYSEAL

[View all Features](#)

Quick Links

- ▶ [Pricing & Availability](#)
- ▶ [Search for Tooling](#)
- ▶ [Product Feature Selector](#)
- ▶ [Contact Us About This Product](#)

[Add to My Part List](#) [Request Sample](#) [Find Similar Products](#) [Buy Product](#)

Documentation & Additional Information

Product Drawings:

- [SLIDE, TAB HOUSING 26POS. Schieber, Flachsteckergeha...](#) (PDF, English)

Catalog Pages/Data Sheets:

- None Available

Product Specifications:

- None Available

Application Specifications:

- None Available

Instruction Sheets:

- None Available

CAD Files:

- None Available

Related Products:

- [Tooling](#)

[List all Documents](#)

Product Features (Please use the Product Drawing for all design activity)

Product Type Features:

- Product Line = Multiple Contact Point (MCP)
- Product Type = Accessory
- Accessory Type = Fixing Slide
- Connector System = LEAVYSEAL
- Accessory Color = Red

Body Features:

- Used With = Tab Housing (2112041)

Housing Features:

- Housing Material = PA66 - GF25

Configuration Features:

- Number of Positions = 26

Industry Standards:

- [RoHS/ELV Compliance](#) = RoHS compliant, ELV compliant
- [Lead Free Solder Processes](#) = Not relevant for lead free process
- [RoHS/ELV Compliance History](#) = Always was RoHS compliant

Operation/Application:

- Application Use = Wire-to-Wire

Packaging Features:

- Packaging Method = Box
- Packaging Quantity = 750

Other:

- Brand = TE Connectivity

Corporate Information

- [About TE](#)
- [Investors](#)
- [News Room](#)
- [Supplier Portal](#)
- [Careers](#)
- [Terms & Conditions](#)
- [Privacy Policy](#)

Quick Links

- [Distributor Inventory](#)
- [Product Cross Reference](#)
- [Documents & Drawings](#)
- [Product Compliance Support Center](#)
- [Site Map](#)

Customer Support

- [Email or Chat With Us](#)
- [Find a Phone Number](#)
- [Knowledge Base](#)
- [Manage Your Account](#)

Keep Me Informed

