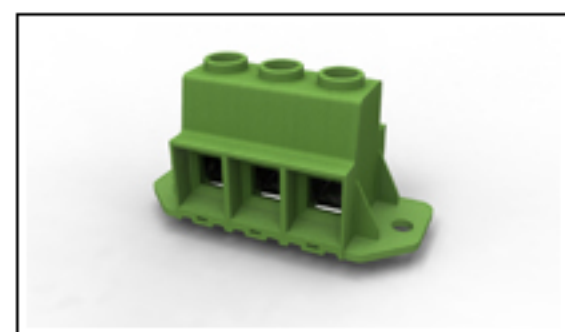




1986715-3 Product Details

[Share](#) [Print](#) [Email](#)



1986715-3

TE Internal Number: 1986715-3

[Active](#)

Terminal Block Connectors

[Always EU RoHS/ELV Compliant \(Statement of Compliance\)](#)

Product Highlights:

- Connector
- Type of Connector = Wire Receptacle
- Not Shrouded
- Housing Color = Green
- Side Stackable

[View all Features](#)

[Add to My Part List](#) [Request Sample](#) [Find Similar Products](#) [Buy Product](#)

Quick Links

- ▶ [Check Pricing & Availability](#)
- ▶ [Search for Tooling](#)
- ▶ [Product Feature Selector](#)
- ▶ [Contact Us About This Product](#)

Documentation & Additional Information

<p>Product Drawings:</p> <ul style="list-style-type: none"> • POWER TERMINAL BLOCK, SOLDERABLE UP TO 275DEG C DOUB... (PDF, English) <p>Catalog Pages/Data Sheets:</p> <ul style="list-style-type: none"> • None Available <p>Product Specifications:</p> <ul style="list-style-type: none"> • None Available <p>Application Specifications:</p> <ul style="list-style-type: none"> • None Available <p>Instruction Sheets:</p> <ul style="list-style-type: none"> • None Available <p>CAD Files:</p> <ul style="list-style-type: none"> • None Available 	<p>Additional Information:</p> <ul style="list-style-type: none"> • Product Line Information <p>Related Products:</p> <ul style="list-style-type: none"> • Tooling
---	--

[List all Documents](#)

Product Features (Please use the Product Drawing for all design activity)

<p>Product Type Features:</p> <ul style="list-style-type: none"> • Product Type = Connector • Type of Connector = Wire Receptacle • Shrouded = No • Mount Angle = Vertical • UL File Number = E60677 <p>Electrical Characteristics:</p> <ul style="list-style-type: none"> • Current Rating, Max. (A) = 130 • Voltage (VAC) = 600 <p>Body Features:</p> <ul style="list-style-type: none"> • Side Stackable = Yes • Number of Positions = 3 • Number of Rows = Single • Centerline (mm [in]) = 15.00 [0.591] • Wire Entry Diameter (Solid Wire) (mm²) = 0.50 - 41.00 • Wire Entry Diameter (Stranded Wire) (mm²) = 0.50 - 41.00 • Wire Entry Angle = Side • Interlock = Without • Wire Range (mm [AWG]) = 0.50-41.00 [20-1] • Pin Length (mm [in]) = 5.00 [0.197] 	<p>Contact Features:</p> <ul style="list-style-type: none"> • Threaded Flange = Without • Screw Flange = With • Contact Plating, Mating Area, Material = Tin over Steel <p>Housing Features:</p> <ul style="list-style-type: none"> • Housing Color = Green • Housing Material = Polyamide <p>Industry Standards:</p> <ul style="list-style-type: none"> • RoHS/ELV Compliance = RoHS compliant, ELV compliant • Lead Free Solder Processes = Wave solder capable to 240°C, Wave solder capable to 260°C, Wave solder capable to 265°C • RoHS/ELV Compliance History = Always was RoHS compliant <p>Other:</p> <ul style="list-style-type: none"> • Brand = Tyco Electronics
---	---