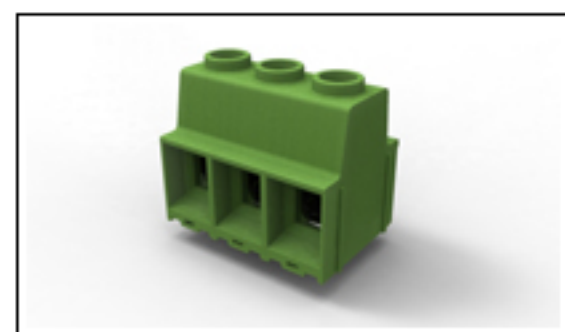




## 1986713-3 Product Details

[Share](#) [Print](#) [Email](#)



**1986713-3**

TE Internal Number: 1986713-3

**Active**

### Terminal Block Connectors

[Always EU RoHS/ELV Compliant \(Statement of Compliance\)](#)

#### Product Highlights:

- Connector
- Type of Connector = Wire Receptacle
- Not Shrouded
- Housing Color = Green
- Side Stackable

[View all Features](#)

[Add to My Part List](#) [Request Sample](#) [Find Similar Products](#) [Buy Product](#)

### Quick Links

- ▶ [Check Pricing & Availability](#)
- ▶ [Search for Tooling](#)
- ▶ [Product Feature Selector](#)
- ▶ [Contact Us About This Product](#)

### Documentation & Additional Information

#### Product Drawings:

- [POWER TERMINAL BLOCK, SOLDERABLE UP TO 275DEG C DOUB...](#) (PDF, English)

#### Catalog Pages/Data Sheets:

- None Available

#### Product Specifications:

- None Available

#### Application Specifications:

- None Available

#### Instruction Sheets:

- None Available

#### CAD Files:

- None Available

#### Additional Information:

- [Product Line Information](#)

#### Related Products:

- [Tooling](#)

[List all Documents](#)

### Product Features (Please use the Product Drawing for all design activity)

#### Product Type Features:

- [Product Type](#) = Connector
- [Type of Connector](#) = Wire Receptacle
- [Shrouded](#) = No
- [Mount Angle](#) = Vertical
- UL File Number = E60677

#### Electrical Characteristics:

- Current Rating, Max. (A) = 130
- Voltage (VAC) = 600

#### Body Features:

- [Side Stackable](#) = Yes
- [Number of Positions](#) = 3
- [Number of Rows](#) = Single
- [Centerline \(mm \[in\]\)](#) = 15.00 [0.591]
- [Wire Entry Diameter \(Solid Wire\) \(mm<sup>2</sup>\)](#) = 0.50 - 41.00
- [Wire Entry Diameter \(Stranded Wire\) \(mm<sup>2</sup>\)](#) = 0.50 - 41.00
- [Wire Entry Angle](#) = Side
- [Interlock](#) = Without
- Wire Range (mm [AWG]) = 0.50-41.00 [20-1]
- Pin Length (mm [in]) = 5.00 [0.197]

#### Contact Features:

- [Threaded Flange](#) = Without
- [Screw Flange](#) = Without
- Contact Plating, Mating Area, Material = Tin over Steel

#### Housing Features:

- [Housing Color](#) = Green
- Housing Material = Polyamide

#### Industry Standards:

- [RoHS/ELV Compliance](#) = RoHS compliant, ELV compliant
- [Lead Free Solder Processes](#) = Wave solder capable to 240°C, Wave solder capable to 260°C, Wave solder capable to 265°C
- RoHS/ELV Compliance History = Always was RoHS compliant

#### Other:

- Brand = Tyco Electronics

### Corporate Information

- [Who We Are](#)
- [Investors](#)
- [News Room](#)
- [Supplier Portal](#)
- [Careers](#)

### Quick Links

- [Check Distributor Inventory](#)
- [Cross Reference](#)
- [Find Documents & Drawings](#)
- [Product Compliance Support Center](#)
- [Site Map](#)

### Customer Support

- [Email or Chat With Us](#)
- [Find a Phone Number](#)
- [Search Knowledge Base](#)
- [Manage your Account](#)

### Keep Me Informed

Receive TE News, Events & Technology Updates

[>](#)

