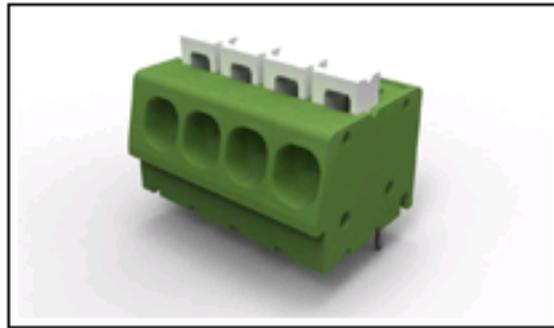




1-1986712-0 Product Details

[Share](#) | [Print](#) | [Email](#)


1-1986712-0

TE Internal Number: 1-1986712-0

Active

Terminal Block Connectors

[Always EU RoHS/ELV Compliant \(Statement of Compliance\)](#)

Product Highlights:

- Connector
- Type of Connector = Spring (Straight)
- Not Shrouded
- Housing Color = Green
- Side Stackable

[View all Features](#)

Quick Links

- ▶ [Check Pricing & Availability](#)
- ▶ [Search for Tooling](#)
- ▶ [Product Feature Selector](#)
- ▶ [Contact Us About This Product](#)

[Add to My Part List](#) [Request Sample](#) [Find Similar Products](#) [Buy Product](#)

Documentation & Additional Information

Product Drawings:

- [SPRING TYPE, SIDE WIRE ENTRY TERMINAL SIDE STACKABLE...](#) (PDF, English)

Catalog Pages/Data Sheets:

- None Available

Product Specifications:

- None Available

Application Specifications:

- None Available

Instruction Sheets:

- None Available

CAD Files:

- None Available

Additional Information:

- [Product Line Information](#)

Related Products:

- [Tooling](#)

[List all Documents](#)

Product Features (Please use the Product Drawing for all design activity)

Product Type Features:

- [Product Type](#) = Connector
- Type of Connector = Spring (Straight)
- [Shrouded](#) = No
- [Mount Angle](#) = Vertical
- UL File Number = E60677

Electrical Characteristics:

- Current Rating, Max. (A) = 16
- Voltage (VAC) = 300
- Lever Color = White

Body Features:

- [Side Stackable](#) = Yes
- [Number of Positions](#) = 10
- [Number of Rows](#) = Single
- [Centerline \(mm \[in\]\)](#) = 5.08 [0.200]
- [Wire Entry Diameter \(Solid Wire\) \(mm²\)](#) = 0.05 - 3.00
- [Wire Entry Diameter \(Stranded Wire\) \(mm²\)](#) = 0.05 - 3.00
- [Wire Entry Angle](#) = Side
- [Interlock](#) = Without
- Wire Range (mm [AWG]) = 0.05-3.00 [30-12]
- Pin Length (mm [in]) = 3.50 [0.138]

Contact Features:

- [Threaded Flange](#) = Without
- [Screw Flange](#) = Without
- Contact Plating, Mating Area, Material = Tin over Copper Alloy

Housing Features:

- [Housing Color](#) = Green
- Housing Material = Polyamide

Industry Standards:

- [RoHS/ELV Compliance](#) = RoHS compliant, ELV compliant
- [Lead Free Solder Processes](#) = Wave solder capable to 240°C, Wave solder capable to 260°C, Wave solder capable to 265°C
- RoHS/ELV Compliance History = Always was RoHS compliant

Other:

- Brand = Tyco Electronics

Corporate Information

[Who We Are](#)
[Investors](#)
[News Room](#)
[Supplier Portal](#)
[Careers](#)

Quick Links

[Check Distributor Inventory](#)
[Cross Reference](#)
[Find Documents & Drawings](#)
[Product Compliance Support Center](#)
[Site Map](#)

Customer Support

[Email or Chat With Us](#)
[Find a Phone Number](#)
[Search Knowledge Base](#)
[Manage your Account](#)

Keep Me Informed

Receive TE News, Events & Technology Updates

