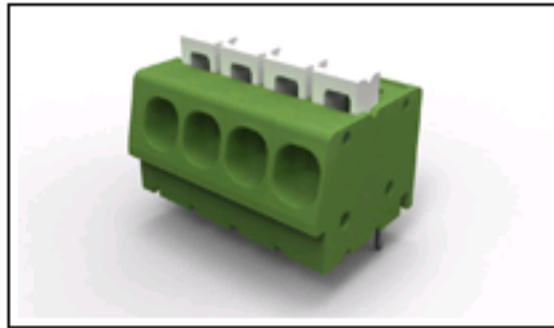




## 1-1986711-0 Product Details

[Share](#) [Print](#) [Email](#)


1-1986711-0

TE Internal Number: 1-1986711-0

Active

### Terminal Block Connectors

[Always EU RoHS/ELV Compliant \(Statement of Compliance\)](#)

#### Product Highlights:

- Connector
- Type of Connector = Spring (Straight)
- Not Shrouded
- Housing Color = Green
- Side Stackable

[View all Features](#)

#### Quick Links

- ▶ [Check Pricing & Availability](#)
- ▶ [Search for Tooling](#)
- ▶ [Product Feature Selector](#)
- ▶ [Contact Us About This Product](#)

[Add to My Part List](#) [Request Sample](#) [Find Similar Products](#) [Buy Product](#)

### Documentation & Additional Information

#### Product Drawings:

- [SPRING TYPE, SIDE WIRE ENTRY TERMINAL BLOCK SIDE STA...](#) (PDF, English)

#### Catalog Pages/Data Sheets:

- None Available

#### Product Specifications:

- None Available

#### Application Specifications:

- None Available

#### Instruction Sheets:

- None Available

#### CAD Files:

- None Available

#### Additional Information:

- [Product Line Information](#)

#### Related Products:

- [Tooling](#)

[List all Documents](#)

### Product Features (Please use the Product Drawing for all design activity)

#### Product Type Features:

- [Product Type](#) = Connector
- Type of Connector = Spring (Straight)
- [Shrouded](#) = No
- [Mount Angle](#) = Vertical
- UL File Number = E60677

#### Electrical Characteristics:

- Current Rating, Max. (A) = 16
- Voltage (VAC) = 300
- Lever Color = White

#### Body Features:

- [Side Stackable](#) = Yes
- [Number of Positions](#) = 10
- [Number of Rows](#) = Single
- [Centerline \(mm \[in\]\)](#) = 5.00 [0.197]
- [Wire Entry Diameter \(Solid Wire\) \(mm<sup>2</sup>\)](#) = 0.05 - 3.00
- [Wire Entry Diameter \(Stranded Wire\) \(mm<sup>2</sup>\)](#) = 0.05 - 3.00
- [Wire Entry Angle](#) = Side
- [Interlock](#) = Without
- Wire Range (mm [AWG]) = 0.05-3.00 [30-12]
- Pin Length (mm [in]) = 3.50 [0.138]

#### Contact Features:

- [Threaded Flange](#) = Without
- [Screw Flange](#) = Without
- Contact Plating, Mating Area, Material = Tin over Copper Alloy

#### Housing Features:

- [Housing Color](#) = Green
- Housing Material = Polyamide

#### Industry Standards:

- [RoHS/ELV Compliance](#) = RoHS compliant, ELV compliant
- [Lead Free Solder Processes](#) = Wave solder capable to 240°C, Wave solder capable to 260°C, Wave solder capable to 265°C
- RoHS/ELV Compliance History = Always was RoHS compliant

#### Other:

- Brand = Tyco Electronics

### Corporate Information

[Who We Are](#)  
[Investors](#)  
[News Room](#)  
[Supplier Portal](#)  
[Careers](#)

### Quick Links

[Check Distributor Inventory](#)  
[Cross Reference](#)  
[Find Documents & Drawings](#)  
[Product Compliance Support Center](#)  
[Site Map](#)

### Customer Support

[Email or Chat With Us](#)  
[Find a Phone Number](#)  
[Search Knowledge Base](#)  
[Manage your Account](#)

### Keep Me Informed

Receive TE News, Events & Technology Updates

[▶](#)

