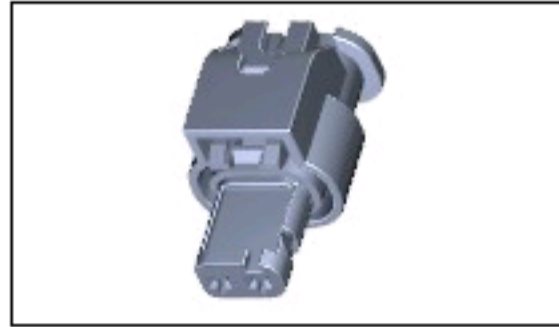




## 1-1823608-1 Product Details

[Share](#) | [Print](#) | [Email](#)


**1-1823608-1**

TE Internal Number: 1-1823608-1  
✔ Active

[View 3D PDF](#)

### Multiple Contact Point (MCP) & MCON Contact Systems

✔ Always EU RoHS/ELV Compliant (Statement of Compliance)

**Product Highlights:**

- MCON Product Line
- Wire-to-Wire
- Applies To Wire/Cable
- Connector
- Connector Assembly

[View all Features](#)

**Quick Links**

- ▶ [Pricing & Availability](#)
- ▶ [Search for Tooling](#)
- ▶ [Product Feature Selector](#)
- ▶ [Contact Us About This Product](#)

[Add to My Part List](#) | [Request Sample](#) | [Find Similar Products](#) | [Buy Product](#)

Feedback

### Documentation & Additional Information

**Product Drawings:**

- None Available

**Catalog Pages/Data Sheets:**

- None Available

**Product Specifications:**

- None Available

**Application Specifications:**

- [Application Specification: Connector 2 to 8pos., MCO...](#) (PDF, English)

**Instruction Sheets:**

- None Available

**CAD Files:** (CAD Format & Compression Information)

- [2D Drawing](#) (DXF, Version E)
- [3D Model](#) (IGES, Version E)
- [3D Model](#) (STEP, Version E)

[List all Documents](#)

**Related Products:**

- [Tooling](#)

### Product Features (Please use the Product Drawing for all design activity)

**Product Type Features:**

- Product Line = MCON
- Product Type = Connector
- Connector Type = Connector Assembly
- [Wire/Cable Type](#) = FLR (Thin Walled Cable)
- PCB Mount Retention = Without
- Key Type = Standard
- Sealed = Yes
- PCB Mount Alignment = Without

**Mechanical Attachment:**

- Contact Retention = With
- Contact Retention Type = Retainer
- Mating Retention Type = Latching

**Termination Features:**

- Termination Method to Wire/Cable = Crimp
- Seal Type = Peripheral

**Dimensions:**

- Mating Area Interface Dimensions (mm [in]) = 1.20 [.047]

**Body Features:**

- Cable Exit Angle = 180°
- Mating Retention = With
- Wire Type = Stranded
- Seal Material = Silicone
- Seal Color = Natural
- Used With = Tab Housing

**Contact Features:**

- Contact Type = Socket

**Housing Features:**

- Connector Style = Plug
- Housing Material = PA66 GF
- Housing Color = Black
- Mating Alignment = With
- Mating Alignment Type = Keyed

**Configuration Features:**

- Number of Positions = 2
- Number of Rows = 1

**Industry Standards:**

- [RoHS/ELV Compliance](#) = RoHS compliant, ELV compliant
- [Lead Free Solder Processes](#) = Not relevant for lead free process
- [RoHS/ELV Compliance History](#) = Always was RoHS compliant

**Identification Marking:**

- Keying = A

**Environmental:**

- Sealing System = Standard

**Conditions for Usage:**

- Applies To = Wire/Cable

**Operation/Application:**

- Application Use = Wire-to-Wire

**Packaging Features:**

- Packaging Method = Box/Carton
- Packaging Quantity = 2,000

**Other:**

- Brand = TE Connectivity

**Corporate Information**

- [About TE](#)
- [Investors](#)
- [News Room](#)
- [Supplier Portal](#)
- [Careers](#)
- [Terms & Conditions](#)
- [Privacy Policy](#)

**Quick Links**

- [Distributor Inventory](#)
- [Product Cross Reference](#)
- [Documents & Drawings](#)
- [Product Compliance Support Center](#)
- [Site Map](#)

**Customer Support**

- [Email or Chat With Us](#)
- [Find a Phone Number](#)
- [Knowledge Base](#)
- [Manage Your Account](#)

**Keep Me Informed**

