

# Breakaway Headers and Shunts (Continued)

## Vertical Surface Mount Headers

### Product Facts

- 2.54 x 2.54 [.100 x .100] Centers
- 0.64 [.025] Square Posts
- Packaged in tape and reel per EIA-481 Specifications
- With pick and place caps

### Material and Finish

**Housing** — LCP

**Color** — Black

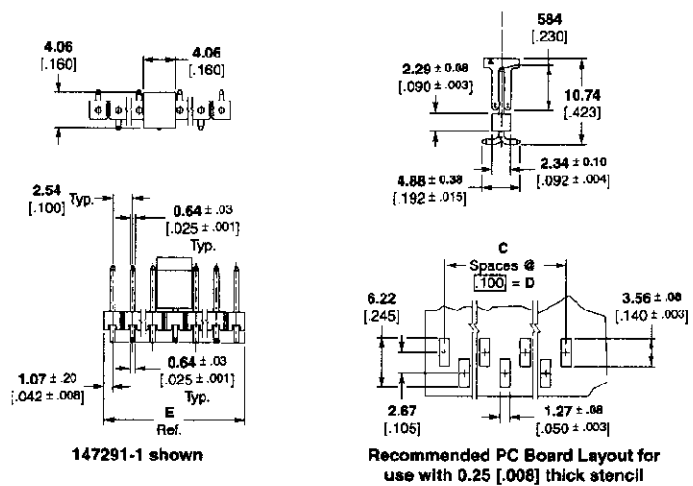
**Posts** — Phosphor bronze

**Plating A** — .000762 [.00030] gold on contact area, 0.00254-0.00508 [.000100-.000200] matte tin-lead on soldertail, all over 0.00127 [.00050] nickel

**Plating B** — 0.00254 [.000100] - 0.00508 [.000200] matte tin-lead over 0.00127 [.00050] nickel entire post

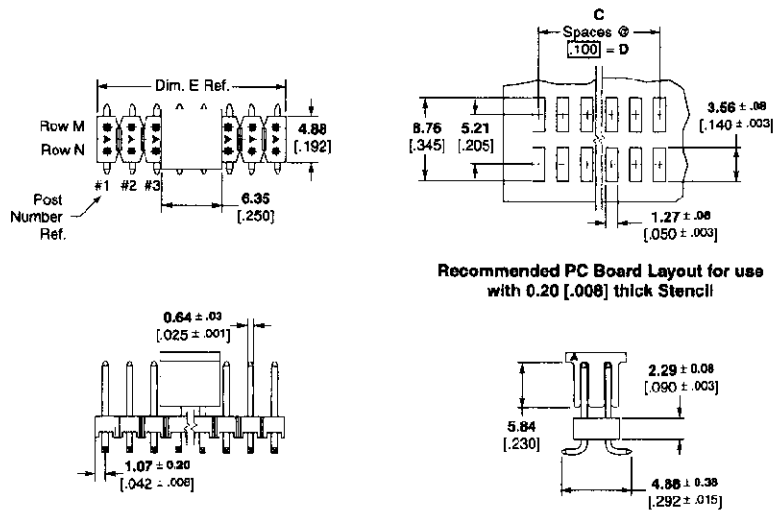
**Note:** Other sizes can be made available, contact AMP.

### Single Row



Tape Width	Dim. C	Dim. D	Dim. E	Plating	No. of Pos.	Part Number
<b>Single Row</b>						
24mm	2.00 .079	5.08 .200	7.21 .284	A	3	147118-1
44mm	6.00 .236	15.24 .600	17.37 .684	B	7	147291-1

### Double Row



Tape Width	Dim. C	Dim. D	Dim. E	Plating	No. of Pos.	Part Number
<b>Double Row</b>						
24mm	2.00 .079	5.08 .200	7.21 .284	A	6	147279-1
44mm	12.00 .472	30.48 1.200	32.61 1.284	A	26	147115-1*

\*Row N, post #3 omitted.