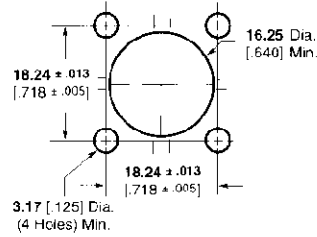
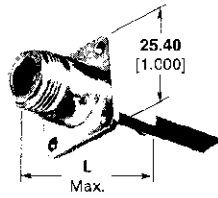


N Series Connectors, 50 Ohm (Continued)

Jack, Panel Mount

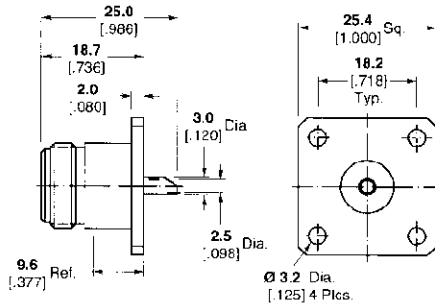


Recommended Panel Cutout

RG/U Cable	Termination Type	Body Plating	Dim. L	Die Set	Hex Across Flats		Part No.
					Center	Braid	
58A, 58C	Hex Crimp	Nickel	41.28 1.625	58436-1	1.73 .068	5.41 .213	415252-1
142, 142A, 142B	Hex Crimp	Nickel	41.28 1.625	58436-1	1.73 .068	5.41 .213	415252-2
8, 213	Hex Crimp	Nickel	41.28 1.625	58485-1	2.54 .100	10.90 .429	415252-3
9, 214	Hex Crimp	Nickel	41.28 1.625	58485-1	2.54 .100	10.90 .429	415252-4
Belden 9880	Hex Crimp	Nickel	41.28 1.625	58485-1	2.54 .100	10.90 .429	415252-5

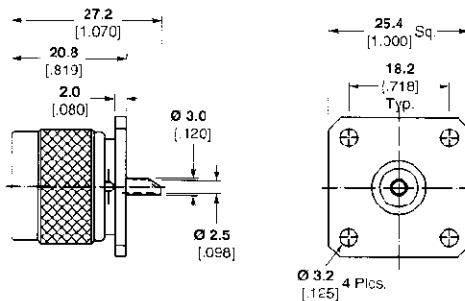
*Crimp Tool— Pro Crimper II Hand Tool, P/N 354940-1 or 626 Series Pneumatic Tool with 679304-1.

Panel Jacks, Solder



Body Plating	M/A-COM Model No.	Part No.
Nickel	3052-0000-10	1057284-1
Nickel	3052-1200-10	1057286-1
Nickel	3052-1201-10	1057290-1

Panel Plug, Solder



Body Plating	M/A-COM Model No.	Part No.
Nickel	3051-0000-10	1057275-1
Nickel	3051-1201-10	1057279-1
Nickel	3051-1200-10	1057277-1