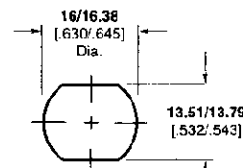
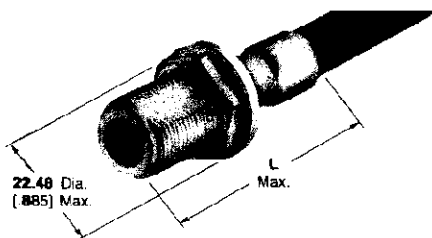


N Series Connectors, 50 Ohm (Continued)

**Bulkhead Jacks,
Crimp**



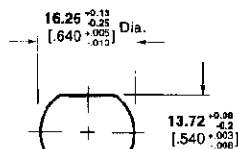
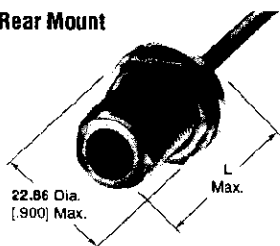
Maximum Panel Thickness 6.35 [.250]
Recommended Panel Cutout

RG/U Cable	Termination Type	Body Plating	Dim. L	Integral Die Hand Tool	Hex Across Flats		Part No.
					Center	Braid	
58, 58A, 58B, 58C	O Crimp	Silver	49.6 1.953	220045-2	—	—	225363-1*
58A, 58C	Hex Crimp	Nickel	45.72 1.800	58436-1**	1.73 .068	5.41 .213	415248-1
223, 55, 55A, 55B	O Crimp	Silver	49.6 1.953	220045-2	—	—	225363-2*
142, 142A, 142B, 400	O Crimp	Silver	49.6 1.953	220045-2	—	—	225363-4*
142, 142A, 142B	Hex Crimp	Nickel	45.72 1.800	58436-1**	1.73 .068	5.41 .213	415248-2
124, 140, 210, 62, 62A, 62B, 59, 59A, 59B, Belden 9291, 9209, 9269, 88269	O Crimp	Silver	45.21 1.780	220045-3	—	—	225363-6
	O Crimp	Nickel	49.61 1.953	220045-3	—	—	1-225667-6
Belden 9880	Hex Crimp	Nickel	45.72 1.800	58485-1**	2.54 .100	10.90 .429	415248-5
8, 213	Hex Crimp	Nickel	45.72 1.800	58485-1**	2.54 .100	10.90 .429	415248-3
393	Hex Crimp	Nickel	45.72 1.800	58485-1**	2.54 .100	10.90 .429	415248-6
9, 214	Hex Crimp	Nickel	45.72 1.800	58485-1**	2.54 .100	10.90 .429	415248-4
9, 9A, 9B, 214	O Crimp	Nickel	49.61 1.953	220015-1	—	—	225667-1

*Hand Tool 69710-1, with Die Insert 220062-1, is available to terminate these connectors. The 626 Pneumatic tool system can also be used.
**Crimp Tool — Pro Crimper II Hand Tool, P/N 354940-1 or 626 Series Pneumatic Tool with 679304-1.

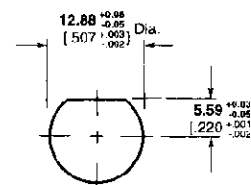
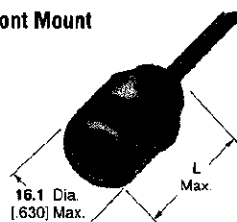
**Bulkhead Jacks for
Semi-Rigid Cable**

Rear Mount



Maximum Panel Thickness 6.35 [.250]
Recommended Panel Cutout

Front Mount



Maximum Panel Thickness 6.35 [.250]
Recommended Panel Cutout

RG/U Cable	Termination Type	Body Plating	M39012/ Military No. and/or Comments	Dim. L	Integral Die Hand Tool	Part No.
402 Semi-Rigid/.141	Crimp	Nickel	Rear Mount	29.37 1.156	—	228658-1
	Crimp	Nickel	Front Mount	29.37 1.156	—	228448-1
	Solder	Nickel	Flange Mount	25.4 1.00	—	1057176-1
405 Semi-Rigid/.085	Solder	Nickel	Rear Mount	33.9 1.335	—	1057165-1

*Tooling—Hand Tool No. 59980-1, Requires (2) Crimping Dies No. 312253-1 and (1) Locator No. 220220-2.