



[My Cart](#)



[My Part Lists](#)

[Sign In/Register](#)



[English \(Change\)](#)

Have a Question?
Chat with a Product
Information Specialist



What can we help you find?



[Products](#)

[Industries](#)

[Resources](#)

[About TE](#)

[My Account](#)

[Innovation](#)

[Support Center](#)

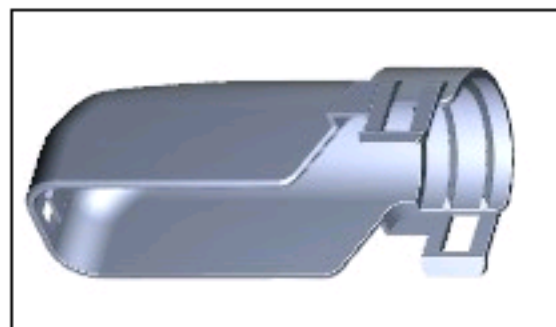
[Home](#) > [Products](#) > [Automotive](#) > [Product Feature Selector](#) > [Product Details](#)

2112046-1 Product Details

[Share](#)

[Print](#)

[Email](#)



2112046-1

TE Internal Number: 2112046-1

Active

[View 3D PDF](#)

Multiple Contact Point (MCP) & MCON Contact Systems



Always EU RoHS/ELV Compliant (Statement of Compliance)

Product Highlights:

- Multiple Contact Point (MCP) Product Line
- Accessory
- Accessory Type = Cover
- Connector System = LEAVYSEAL
- 26 Positions

[View all Features](#)

Quick Links

- ▶ [Pricing & Availability](#)
- ▶ [Search for Tooling](#)
- ▶ [Product Feature Selector](#)
- ▶ [Contact Us About This Product](#)

[Add to My Part List](#)



[Request Sample](#)



[Find Similar Products](#)



[Buy Product](#)

Documentation & Additional Information

Product Drawings:

- [COVER FOR 26 POS. HOUSING Abdeckkappe fuer 26 pol. G... \(PDF, English\)](#)

Catalog Pages/Data Sheets:

- None Available

Product Specifications:

- None Available

Application Specifications:

- None Available

Instruction Sheets:

- None Available

CAD Files: (CAD Format & Compression Information)

- [2D Drawing \(DXF, Version A\)](#)
- [3D Model \(IGES, Version A\)](#)
- [3D Model \(STEP, Version A\)](#)

[List all Documents](#)

Related Products:

- [Tooling](#)

Product Features (Please use the Product Drawing for all design activity)

Product Type Features:

- Product Line = Multiple Contact Point (MCP)
- Product Type = Accessory
- Accessory Type = Cover
- Connector System = LEAVYSEAL
- Accessory Color = Black

Body Features:

- Used With = Receptacle (2112035) & Tab Housing (2112041)

Housing Features:

- Housing Material = PA66 - GF25

Configuration Features:

- Number of Positions = 26

Industry Standards:

- [RoHS/ELV Compliance](#) = RoHS compliant, ELV compliant
- [Lead Free Solder Processes](#) = Not relevant for lead free process
- [RoHS/ELV Compliance History](#) = Always was RoHS compliant

Packaging Features:

- Packaging Method = Box
- Packaging Quantity = 300

Other:

- Brand = TE Connectivity

Corporate Information

[About TE](#)

[Investors](#)

[News Room](#)

[Supplier Portal](#)

[Careers](#)

[Terms & Conditions](#)

[Privacy Policy](#)

Quick Links

[Distributor Inventory](#)

[Product Cross Reference](#)

[Documents & Drawings](#)

[Product Compliance Support Center](#)

[Site Map](#)

Customer Support

[Email or Chat With Us](#)

[Find a Phone Number](#)

[Knowledge Base](#)

[Manage Your Account](#)

Keep Me Informed

Receive TE News, Events & Technology Updates

Enter your email address

