



Have a Question?
Chat with a Product
Information Specialist



What can we help you find?



[Products](#) | [Industries](#) | [Resources](#) | [About TE](#) | [My Account](#) | [Innovation](#) | [Support Center](#)

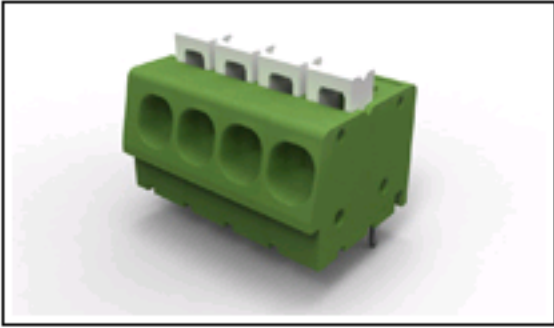
[Home](#) > [Products](#) > [Terminal Blocks & Strips](#) > [Product Feature Selector](#) > [Product Details](#)

1-1986712-5 Product Details

[Share](#)

[Print](#)

[Email](#)



1-1986712-5

TE Internal Number: 1-1986712-5

[Active](#)

Terminal Block Connectors

[Always EU RoHS/ELV Compliant \(Statement of Compliance\)](#)

Product Highlights:

- Connector
- Type of Connector = Spring (Straight)
- Not Shrouded
- Housing Color = Green
- Side Stackable

[View all Features](#)

Quick Links

- [Pricing & Availability](#)
- [Search for Tooling](#)
- [Product Feature Selector](#)
- [Contact Us About This Product](#)

[Add to My Part List](#)



[Request Sample](#)



[Find Similar Products](#)



[Buy Product](#)

Documentation & Additional Information

Product Drawings:

- [SPRING TYPE, SIDE WIRE ENTRY TERMINAL SIDE STACKABLE...](#) (PDF, English)

Catalog Pages/Data Sheets:

- None Available

Product Specifications:

- None Available

Application Specifications:

- None Available

Instruction Sheets:

- None Available

CAD Files:

- None Available

Additional Information:

- [Product Line Information](#)

Related Products:

- [Tooling](#)

[List all Documents](#)

Product Features (Please use the Product Drawing for all design activity)

Product Type Features:

- [Product Type](#) = Connector
- Type of Connector = Spring (Straight)
- [Shrouded](#) = No
- [Mount Angle](#) = Vertical
- UL File Number = E60677

Electrical Characteristics:

- Current Rating, Max. (A) = 16
- Voltage (VAC) = 300

Dimensions:

- Pin Length (mm [in]) = 3.50 [0.138]

Body Features:

- [Side Stackable](#) = Yes
- [Wire Entry Diameter \(Solid Wire\)](#) (mm²) = 0.05 – 3.00
- [Wire Entry Diameter \(Stranded Wire\)](#) (mm²) = 0.05 – 3.00
- [Wire Entry Angle](#) = Side
- [Interlock](#) = Without
- [Wire Range](#) (mm [AWG]) = 0.05-3.00² [30-12]
- [Lever Color](#) = White

Contact Features:

- [Threaded Flange](#) = Without
- Contact Plating, Mating Area, Material = Tin over Copper Alloy

Housing Features:

- [Housing Color](#) = Green
- [Centerline \(mm \[in\]\)](#) = 5.08 [0.200]
- Housing Material = Polyamide

Configuration Features:

- [Screw Flange](#) = Without
- [Number of Positions](#) = 15
- [Number of Rows](#) = Single

Industry Standards:

- [RoHS/ELV Compliance](#) = RoHS compliant, ELV compliant
- [Lead Free Solder Processes](#) = Wave solder capable to 240°C, Wave solder capable to 260°C, Wave solder capable to 265°C
- [RoHS/ELV Compliance History](#) = Always was RoHS compliant

Other:

- [Brand](#) = TE Connectivity

Corporate Information

[About TE](#)
[Investors](#)
[News Room](#)
[Supplier Portal](#)
[Careers](#)
[Terms & Conditions](#)
[Privacy Policy](#)

Quick Links

[Distributor Inventory](#)
[Product Cross Reference](#)
[Documents & Drawings](#)
[Product Compliance Support Center](#)
[Site Map](#)

Customer Support

[Email or Chat With Us](#)
[Find a Phone Number](#)
[Knowledge Base](#)
[Manage Your Account](#)

Keep Me Informed

Receive TE News, Events & Technology Updates

Enter your email address

