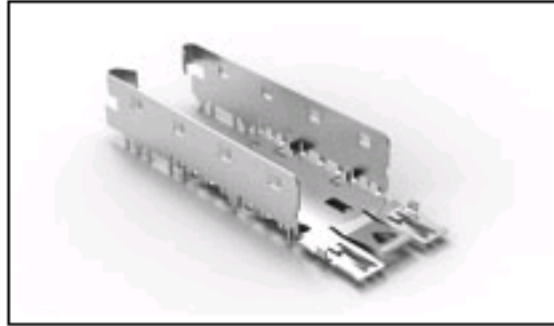




6367034-1 Product Details

[Share](#) | [Print](#) | [Email](#)


6367034-1

TE Internal Number: 6367034-1
✔ Active

[View 3D PDF](#)

Pluggable Connectors, Cages & Accessories

✔ Always EU RoHS/ELV Compliant (Statement of Compliance)

Product Highlights:

- SFP Application
- Cage
- Cage Type = Single (Bottom)
- Without Lightpipe
- Single Port Configuration

[View all Features](#)

Quick Links

- ▶ [Check Pricing & Availability](#)
- ▶ [Search for Tooling](#)
- ▶ [View Connectors \(5\)](#)
- ▶ [View Dust Cap/Plugs \(2\)](#)
- ▶ [View Cable Assemblies \(5\)](#)
- ▶ [View Cages \(1\)](#)
- ▶ [Product Feature Selector](#)
- ▶ [Contact Us About This Product](#)

[Add to My Part List](#) |
 [Request Sample](#) |
 [Find Similar Products](#) |
 [Buy Product](#)

Documentation & Additional Information

Product Drawings:

- [CAGE, BOTTOM, SFP \(PDF, English\)](#)

Catalog Pages/Data Sheets:

- [1773408-1 Pluggable Input/Output Solutions catalog -... \(PDF, English\)](#)
- [Solutions for AdvancedTCA, AdvancedTCA 300, MicroTCA... \(PDF, English\)](#)
- [4-1773455-4 Quick Reference Guide SFP Solutions \(PDF, English\)](#)

Product Specifications:

- None Available

Application Specifications:

- None Available

Instruction Sheets:

- None Available

CAD Files: (CAD Format & Compression Information)

- [2D Drawing \(DXF, Version C\)](#)
- [3D Model \(IGES, Version C\)](#)
- [3D Model \(STEP, Version C\)](#)

Related Products:

- [Tooling](#)
- [Connectors \(5\)](#)
- [Dust Cap/Plugs \(2\)](#)
- [Cable Assemblies \(5\)](#)
- [Cages \(1\)](#)

[List all Documents](#)

Product Features (Please use the Product Drawing for all design activity)

Product Type Features:

- [Product Type](#) = Cage
- [Termination Type](#) = Pin-in-Paste Reflow

Mechanical Attachment:

- [PCB Mount](#) = Double Sided (Belly-to-Belly)

Termination Features:

- [Termination Post Length \(mm \[in\]\)](#) = 1.10 [0.043]

Body Features:

- [Cage Plating](#) = Tin over Nickel

Housing Features:

- [Cage Type](#) = Single (Bottom)
- [Cage Material](#) = Copper Alloy

Configuration Features:

- [Lightpipe](#) = Without
- [Configuration](#) = Single Port

Industry Standards:

- [RoHS/ELV Compliance](#) = RoHS compliant, ELV compliant
- [Lead Free Solder Processes](#) = Reflow solder capable to 245°C, Reflow solder capable to 260°C
- [RoHS/ELV Compliance History](#) = Always was RoHS compliant

Operation/Application:

- [Application](#) = SFP

Packaging Features:

- [Packaging Method](#) = Reel

Other:

- [Brand](#) = TE Connectivity

Corporate Information

- [About TE](#)
- [Investors](#)
- [News Room](#)
- [Supplier Portal](#)
- [Careers](#)
- [Terms & Conditions](#)
- [Privacy Policy](#)

Quick Links

- [Check Distributor Inventory](#)
- [Cross Reference Products](#)
- [Find Documents & Drawings](#)
- [Product Compliance Support Center](#)
- [Site Map](#)

Customer Support

- [Email or Chat With Us](#)
- [Find a Phone Number](#)
- [Search Knowledge Base](#)
- [Manage Your Account](#)

Keep Me Informed

Receive TE News, Events & Technology Updates

Enter your email address [▶](#)

