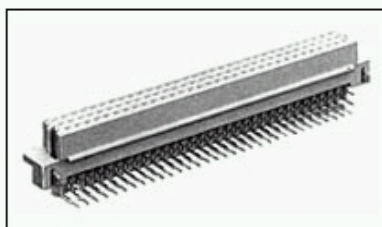
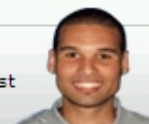


5650893-5 Product Details

Have a Question?

Chat with a Product Information Specialist



5650893-5

TE Internal Number: 5650893-5

 **Active**

Eurocard Type R

 [Always EU RoHS/ELV Compliant \(Statement of Compliance\)](#)

Product Highlights:

- Housing Gender = Plug
- Contact Gender = Receptacle
- 48 Positions
- PCB Mount Angle = Right Angle
- With PCB Mount Retention

[View all Features](#)

Quick Links

- ▶ [Check Pricing & Availability](#)
- ▶ [Search for Tooling](#)
- ▶ [View Mating Products \(8\)](#)
- ▶ [Product Feature Selector](#)
- ▶ [Contact Us About This Product](#)

 [Add to My Part List](#)  [Request Sample](#)  [Find Similar Products](#)  [Buy Product](#)

Documentation & Additional Information

Documents are temporarily unavailable. We are working hard to correct the problem. Please try again later.

Additional Information:

- [Product Line Information](#)

Related Products:

- [Tooling](#)
- [Mating Products \(8\)](#)

Product Features (Please use the Product Drawing for all design activity)

Product Type Features:

- [PCB Mount Angle](#) = Right Angle
- [PCB Mount Retention](#) = With
- [Post Type](#) = Solder Post
- [Mating Polarization](#) = Without
- [Guides](#) = Without
- [Make First / Break Last](#) = No
- [DIN Level](#) = II
- PCB Thickness (Minimum) (mm [in]) = 1.57 [0.062]
- Color = Gray

Termination Related Features:

- [Termination Post Length \(mm \[in\]\)](#) = 2.79 [0.110]
- Solder Tail Contact Plating = Tin

Body Related Features:

- [Number of Positions](#) = 48
- [PCB Mount Retention Type](#) = Boardlock(s)
- Contact Cross Section (mm [in]) = 0.30 x 0.61 [.012 x .024]
- [Rows Loaded](#) = A, B, C

Contact Related Features:

- Contact Gender = Receptacle
- Preloaded = Yes
- Contact Base Material = Copper Alloy
- Contact Plating, Mating Area, Material = DIN 41612 Class 2

Housing Related Features:

- Housing Gender = Plug
- Housing Material = Polymer
- UL Flammability Rating = UL 94V-0

Industry Standards:

- [RoHS/ELV Compliance](#) = RoHS compliant, ELV compliant
- [Lead Free Solder Processes](#) = Wave solder capable to 240°C, Wave solder capable to 260°C, Wave solder capable to 265°C
- [Flux-Tight Coating](#) = Without
- RoHS/ELV Compliance History = Always was RoHS compliant

Other:

- Brand = AMP

 BOOKMARK 

Corporate Information

[Who We Are](#)
[Investors](#)
[News Room](#)
[Supplier Portal](#)
[Careers](#)

Quick Links

[Check Distributor Inventory](#)
[Cross Reference](#)
[Find Documents & Drawings](#)
[Product Compliance Support Center](#)
[Site Map](#)

Customer Support

[Email or Chat with Us](#)
[Find a Phone Number](#)
[Search Knowledge Base](#)
[Manage Your Account](#)

Sign up for our eNewsletter

Enter your email address 

Follow us on: 