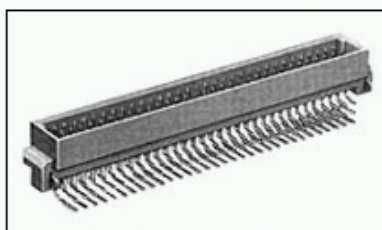
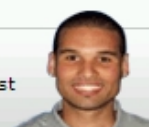


5536010-5 Product Details

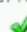
Have a Question?

Chat with a Product Information Specialist



5536010-5

TE Internal Number: 5536010-5

 [Active](#)

Eurocard Type C

 [Always EU RoHS/ELV Compliant \(Statement of Compliance\)](#)

Product Highlights:

- Preloaded
- Contact Gender = Pin
- Housing Gender = Receptacle
- Type = Type C
- 2.54 mm Centerline

[View all Features](#)

[Add to My Part List](#)  [Request Sample](#)  [Find Similar Products](#)  [Buy Product](#)

Quick Links

- ▶ [Check Pricing & Availability](#)
- ▶ [Search for Tooling](#)
- ▶ [View Mating Products \(31\)](#)
- ▶ [Product Feature Selector](#)
- ▶ [Contact Us About This Product](#)

Documentation & Additional Information

Documents are temporarily unavailable. We are working hard to correct the problem. Please try again later.

Additional Information:

- [Product Line Information](#)

Related Products:

- [Tooling](#)
- [Mating Products \(31\)](#)

Product Features (Please use the Product Drawing for all design activity)

Product Type Features:

- [PCB Mount Retention](#) = Without
- [PCB Mount Angle](#) = Right Angle
- [Post Type](#) = Solder Post
- [Size](#) = Standard
- [Make First / Break Last](#) = No
- [Bus Type](#) = FUTUREBUS, MULTIBUS (II), NUBUS, VMEbus, VXIBus
- [DIN Level](#) = II
- [Mounting Ears](#) = Without
- Guides = Without
- Toolless (Flat Rock) = No

Termination Related Features:

- [Termination Post Length \(mm \[in\]\)](#) = 2.65 [0.104]
- Solder Tail Contact Plating = Tin

Body Related Features:

- [Type](#) = Type C
- Centerline (mm [in]) = 2.54 [0.100]
- Number of Rows = 3
- [Number of Positions](#) = 96
- [Rows Loaded](#) = A, B, C
- [Contact Cross Section \(mm \[in\]\)](#) = 0.64 [.025] Sq.

Contact Related Features:

- Preloaded = Yes
- Contact Gender = Pin
- Contact Base Material = Copper Alloy
- Contact Plating, Mating Area, Material = DIN 41612 Class 2

Housing Related Features:

- Housing Gender = Receptacle
- Housing Material = Polymer
- UL Flammability Rating = UL 94V-0

Industry Standards:

- [RoHS/ELV Compliance](#) = RoHS compliant, ELV compliant
- [Lead Free Solder Processes](#) = Reflow solder capable to 245°C, Reflow solder capable to 260°C
- [Flux-Tight Coating](#) = Without
- RoHS/ELV Compliance History = Always was RoHS compliant

Conditions for Usage:

- [Applies To](#) = Printed Circuit Board
- [High Temperature Housing](#) = Yes

Other:

- Brand = AMP

 BOOKMARK 

Corporate Information

[Who We Are](#)
[Investors](#)
[News Room](#)
[Supplier Portal](#)
[Careers](#)

Quick Links

[Check Distributor Inventory](#)
[Cross Reference](#)
[Find Documents & Drawings](#)
[Product Compliance Support Center](#)
[Site Map](#)

Customer Support

[Email or Chat with Us](#)
[Find a Phone Number](#)
[Search Knowledge Base](#)
[Manage Your Account](#)

Sign up for our eNewsletter

Enter your email address 

Follow us on: 