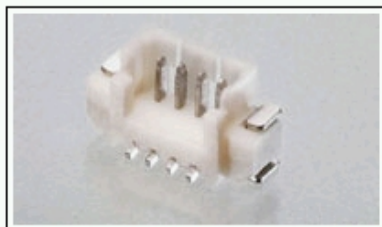
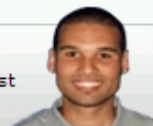


## 1734260-3 Product Details

### Have a Question?

Chat with a Product Information Specialist



**1734260-3**

TE Internal Number: 1734260-3

Active

[View 3D PDF](#)

### High Performance Interconnects (HPI)

[Always EU RoHS/ELV Compliant](#) ([Statement of Compliance](#))

#### Product Highlights:

- Connector
- Preloaded
- Housing Gender = Header - Pin
- Contact Gender = Pin
- Housing Color = Natural

[View all Features](#)

### Quick Links

- ▶ [Check Pricing & Availability](#)
- ▶ [Search for Tooling](#)
- ▶ [View Mating Products \(4\)](#)
- ▶ [Product Feature Selector](#)
- ▶ [Contact Us About This Product](#)

[Add to My Part List](#) [Request Sample](#) [Find Similar Products](#) [Buy Product](#)

### Documentation & Additional Information

#### Product Drawings:

- [WIRE TO BOARD MALE HEADER, 1.25MM PITCH, SMT STRAIGH...](#) (PDF, English)

#### Catalog Pages/Data Sheets:

- None Available

#### Product Specifications:

- [Wire To Board Connector](#) (PDF, English)

#### Application Specifications:

- None Available

#### Instruction Sheets:

- None Available

#### CAD Files: ([CAD Format & Compression Information](#))

- [2D Drawing](#) (DXF, Version 01)
- [3D Model](#) (IGES, Version 01)
- [3D Model](#) (STEP, Version 01)

[List all Documents](#)

#### Additional Information:

- [Product Line Information](#)

#### Related Products:

- [Tooling](#)
- [Mating Products \(4\)](#)

### Product Features (Please use the Product Drawing for all design activity)

#### Product Type Features:

- [Product Type](#) = Connector
- [Mount Angle](#) = Vertical

#### Body Related Features:

- [Number of Positions](#) = 3
- [Centerline \(mm \[in\]\)](#) = 1.25 [0.049]
- [Number of Rows](#) = Single
- [Locking Interface](#) = Without
- [Post Material](#) = Phosphor Bronze
- [Post Plating](#) = Tin over Nickel

#### Contact Related Features:

- [Preloaded](#) = Yes
- [Contact Gender](#) = Pin
- [Contact Termination Type](#) = Surface Mount
- [Contact Base Material](#) = Phosphor Bronze
- [Contact Finish](#) = Tin over Nickel

#### Housing Related Features:

- [Housing Gender](#) = Header - Pin
- [Housing Color](#) = Natural
- [UL Flammability Rating](#) = UL 94V-0
- [Housing Material](#) = High Temperature Thermoplastic

#### Industry Standards:

- [RoHS/ELV Compliance](#) = RoHS compliant, ELV compliant
- [Lead Free Solder Processes](#) = Reflow solder capable to 245°C, Reflow solder capable to 260°C
- [RoHS/ELV Compliance History](#) = Always was RoHS compliant

#### Packaging Related Features:

- [Packaging Method](#) = 24mm Tape & Reel
- [Packaging Quantity](#) = 1,000/Reel

#### Other:

- [Brand](#) = Tyco Electronics

BOOKMARK

### Corporate Information

[Who We Are](#)  
[Investors](#)  
[News Room](#)  
[Supplier Portal](#)  
[Careers](#)

### Quick Links

[Check Distributor Inventory](#)  
[Cross Reference](#)  
[Find Documents & Drawings](#)  
[Product Compliance Support Center](#)  
[Site Map](#)

### Customer Support

[Email or Chat with Us](#)  
[Find a Phone Number](#)  
[Search Knowledge Base](#)  
[Manage Your Account](#)

### Sign up for our eNewsletter

Enter your email address

Follow us on:

