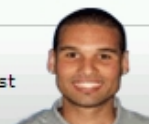


1734193-1 Product Details

Have a Question?

Chat with a Product Information Specialist



1734193-1

TE Internal Number: 1734193-1

 **Active**

High Performance Interconnects (HPI)

 [Always EU RoHS/ELV Compliant \(Statement of Compliance\)](#)

Product Highlights:

- Contact
- Contact Gender = Receptacle
- 1.25 mm Centerline

[View all Features](#)

Quick Links

- ▶ [Check Pricing & Availability](#)
- ▶ [Search for Tooling](#)
- ▶ [View Mating Products \(126\)](#)
- ▶ [Product Feature Selector](#)
- ▶ [Contact Us About This Product](#)

 [Add to My Part List](#)
 [Request Sample](#)
 [Find Similar Products](#)
 [Buy Product](#)

Documentation & Additional Information

Product Drawings:

- [WIRE TO BOARD SOCKET, TERMINAL](#) (PDF, English)

Catalog Pages/Data Sheets:

- None Available

Product Specifications:

- [WIRE-TO-BOARD SERIES](#) (PDF, English)

Application Specifications:

- None Available

Instruction Sheets:

- None Available

CAD Files:

- None Available

Additional Information:

- [Product Line Information](#)

Related Products:

- [Tooling](#)
- [Mating Products \(126\)](#)

[List all Documents](#)

Product Features (Please use the Product Drawing for all design activity)

Product Type Features:

- [Product Type](#) = Contact
- Wire Size (mm² [AWG]) = 28 - 32 AWG

Body Related Features:

- [Centerline \(mm \[in\]\)](#) = 1.25 [0.049]

Contact Related Features:

- Contact Gender = Receptacle
- Contact Base Material = Phosphor Bronze
- Contact Finish = Matte Tin over Nickel

Industry Standards:

- [RoHS/ELV Compliance](#) = RoHS compliant, ELV compliant
- [Lead Free Solder Processes](#) = Not relevant for lead free process
- RoHS/ELV Compliance History = Always was RoHS compliant

Packaging Related Features:

- Packaging Method = Reel
- Packaging Quantity = 20,000/Reel

Other:

- Brand = AMP

 [BOOKMARK](#) 

Corporate Information

[Who We Are](#)
[Investors](#)
[News Room](#)
[Supplier Portal](#)
[Careers](#)

Quick Links

[Check Distributor Inventory](#)
[Cross Reference](#)
[Find Documents & Drawings](#)
[Product Compliance Support Center](#)
[Site Map](#)

Customer Support

[Email or Chat with Us](#)
[Find a Phone Number](#)
[Search Knowledge Base](#)
[Manage Your Account](#)

Sign up for our eNewsletter

Enter your email address



Follow us on:

