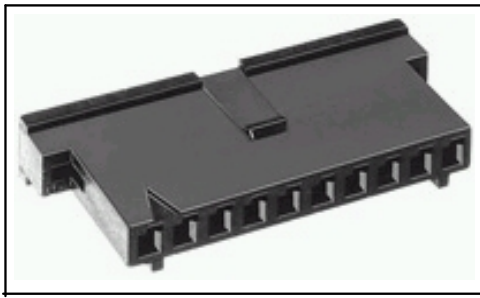


## Product Details for 88859 -6



**88859 -6**

[Active](#)

### Flexible Film Connectors

[RoHS Compliant \(Statement of Compliance\)](#)

#### Product Highlights:

- ? [Housing](#)
- ? [2.54 mm Centerline](#)
- ? [Connector Type = Standard](#)
- ? [Number of Positions = 15](#)
- ? [Number of Rows = Single](#)

[View all Features](#)

### Quick Links

- [Check Pricing & Availability](#)
- [Search for Tooling](#)
- [View Mating Products \(2\)](#)
- [Product Feature Selector](#)
- [Contact Us About This Product](#)

### Documentation & Additional Information

#### Product Drawings:

- ? [HOUSING, RECEPTACLE, FFC, .100@22, SINGLE ROW](#) (PDF, English)

#### Catalog Pages/Data Sheets:

- ? None Available

#### Product Specifications:

- ? None Available

#### Application Specifications:

- ? None Available

#### Instruction Sheets:

- ? None Available

#### CAD Files:

- ? None Available

#### Additional Information:

- ? [Product Line Information](#)

#### Additional Product Images:

- ? [Typical Application, to -Board](#)
- ? [Typical Application, to -Cable](#)

#### Related Products:

- ? [Tooling](#)
- ? [Mating Products \(2\)](#)

[List all Documents](#)

### Product Features (Please use the Product Drawing for all design activity)

#### Product Type Features:

- ? [Product Type](#) = Housing
- ? [Connector Type](#) = Standard
- ? [Number of Positions](#) = 15
- ? [Mating Type](#) = Receptacle
- ? [Mating Connector Lock](#) = With
- ? [Mating Connector Lock Type](#) = Detent
- ? [Mating Polarization](#) = With
- ? [Mounting Ears](#) = Without
- ? Flame Retardant = Yes
- ? Color = Black
- ? Comment = Use Extraction Tool No. 91092 -1 for round wire contacts.

#### Mechanical Attachment:

- ? [Panel Attachment](#) = Without

#### Body Related Features:

- ? [Centerline \(mm \[in\]\)](#) = 2.54 [0.100]
- ? [Number of Rows](#) = Single

#### Housing Related Features:

- ? Housing Material = Thermoplastic
- ? Housing Flammability Rating = UL 94V -0

#### Industry Standards:

- ? [RoHS/ELV Compliance](#) = RoHS compliant, ELV compliant
- ? [Lead Free Solder Processes](#) = Not relevant for lead free process
- ? RoHS/ELV Compliance History = Always was RoHS compliant

#### Conditions for Usage:

- ? [Terminate To](#) = FFC Cable

#### Other:

- ? Brand = AMP