

## Premium CERTI-CRIMP II Hand Tools

### Fast Facts

- Designed to exacting specifications
- Ratchet control provides complete crimping cycle
- For most military, UL and CSA applications
- Manufactured using the highest quality materials
- Requires minimum skill
- Repairable
- Calibrated; recalibration recommended every 6 months or 5,000 cycles
- Many SAHT and DAHT crimping heads, and many die sets, can be adapted for use with the 626 Pneumatic Tool System (*Request Catalog 124208*)
- Produced under a Quality management System certified to ISO 9001. (*A copy of the certificate is available upon request.*)

CERTI-CRIMP Hand Tools are top-of-the-line, premium, hand-operated tools for crimping a broad array of terminals, contacts and special wiring devices available from TE Connectivity. They are designed to exacting specifications to produce consistent, high-quality terminations. A potential service life of over 50,000 cycles is possible, depending on operator care.

There are currently seven basic styles of CERTI-CRIMP Hand Tools. The choice depends on the product being applied and/or your preferred method of application. For example, open barrel contacts typically require straight-action die movement to minimize possible rotation during crimping. Or, if your application requires crimping different sizes of terminals, you may prefer using a single tool with a combination of crimping nests, rather than two or three separate tools.

Other options include insulation crimp adjustment for different insulation thicknesses, a locator for properly positioning and supporting the terminal or contact in the tool, a wire stop, and color coding and/or wire size information on the head of the tool or on the handles.

All CERTI-CRIMP Hand Tools feature the reliable ratchet control. The ratchet will not release until the handles are fully closed and the dies bottomed. This helps eliminate partial crimps.

CERTI-CRIMP Hand Tools are well suited for low production runs, prototype work, and repairs—almost any application requiring consistent, highly-reliable terminations. CERTI-CRIMP Hand Tools are designed to meet all feature requirements listed on applicable TE Application Specifications. (Check appropriate product catalogs for qualification to military specifications, UL recognition and CSA certification.)



Need More Information?

For information about tooling, call 1-800-522-6752 or e-mail [toolsales@te.com](mailto:toolsales@te.com).

Catalog 65780  
Revised 04-2011

For drawings or technical data, contact your TE Connectivity sales engineer or call the Technical Support Center: 1-800-522-6752. Dimensions are in millimeters unless specified otherwise. Values in brackets are English equivalents unless specified otherwise. Specifications subject to change. Consult TE Connectivity for latest specifications.

## Connector/Terminal to Tool Reference

Connector/ Terminal	Style	Wire Range		Max. Insul. Dia.		Hand Tool Part Numbers			Die Set for Tool Frame	Insertion/ Extraction Tool
		AWG	mm <sup>2</sup>	in	mm	HHHT	DAHT	SAHT		
AMPLIMITE D-Sub. Connectors	Size 20 DF Contacts	28-24	0.08-0.2	.040	1.02	—	—	91503-1	—	91285-1
		24-20	0.2-0.5	.060	1.52	—	—	—	—	
	Size 22 DF Contacts	28-22	0.08-0.3	.040	1.02	—	—	91520-1	—	
AMPMODU Connectors	Mod. IV Contacts	26-22	0.12-0.3	.061	1.55	—	—	91517-1	—	843996-3 (Ext./Reset)
		24-20	0.2-0.5	.069	1.75	—	—	91516-1	—	
	Locking Clip Contacts	26-22	0.12-0.3	.062	1.58	—	—	91533-1	—	91084-1
	MTE & Tandem Spring Contacts	32-28	0.03-0.08	.054	1.37	—	—	58342-2	—	—
		26-22	0.12-0.3	.065	1.65	—	—	91531-1	—	—
	Short Point Contacts	32-22	0.03-0.3	.060	1.52	—	—	91518-1	—	843473-1 (Ext.)
24-20		0.2-0.5	.060	1.52	—	—	91551-1	—		
CPC Connectors, M Series Connectors	Type II Contacts	28-24	0.08-0.2	.085	2.16	—	—	91539-1	90230-1 <sup>1</sup>	—
		24-20	0.2-0.5	.060	1.52	—	—	91539-1	90231-2 <sup>1</sup>	—
		18-14	0.8-2	—	—	—	—	—	—	—
	Type III+ Contacts	26-24	0.12-0.2	.090	2.29	—	—	91515-1	—	200893-2/ 305183
		24-20	0.2-0.5	.120	3.05	—	—	—	—	
		24-20	0.2-0.5	.100	2.54	—	—	91523-1	—	
		18-16	0.8-1.25	.100	2.54	—	—	—	—	
		24-20	0.2-0.5	.070	1.78	—	—	—	—	
		18-16	0.8-1.25	.100	2.54	—	—	91505-1	—	
	Type XII Contacts	18-14	0.8-2	.100	2.54	—	—	91519-1	—	—
		16	1.25	.160	4.06	90382-2	—	—	90145-2 <sup>1</sup>	—
		14-12	2-3	.160	4.06	90382-2	—	—	90145-1 <sup>1</sup>	—
	Subminiature COAXICON Contacts	10-8	5-7	.220	5.59	90384-1	—	—	90140-1 <sup>1</sup>	91019-3 (Ext.)
174 RG/U		—	—	—	—	—	69690 <sup>1</sup>	—	—	
187 RG/U	—	—	—	—	—	—	69690-1 <sup>1</sup>	—	—	
FASTON Straight Receptacles (Premier Line Only)	250 Series	22-18	0.3-0.8	.130	3.30	—	90166-1	—	—	465629-□* (Installation Tip Required)
		18-14	0.8-2	.170	4.32	—	90165-1	—	—	
		14-10	2-5	.200	5.08	—	90120	—	—	
MATE-N-LOK Connectors	Commercial Contacts	30-22	0.05-0.3	.075	1.91	—	—	91515-1	—	455830-1/ 465644-1
		24-18	0.2-0.8	.100	2.54	—	—	91512-1	—	
		20-14	0.5-2	.130	3.30	—	—	91504-1	—	
		24-18	0.2-0.8	.100	2.54	—	—	91510-1	—	
	Universal & Universal II Contacts	20-14	0.5-2	.130	3.30	—	—	91500-1	—	455830-1/ 318851-1
		20-18	0.5-0.8	.200	5.08	—	—	91508-1	—	
		16-14	1.25-2	.200	5.08	—	—	91506-1	—	
	Mini-Universal	12	3	.200	5.08	—	—	—	58380-1 <sup>1</sup>	—
		10	5	.200	5.08	—	—	—	58380-2 <sup>1</sup>	—
	Mini-Universal II Contacts	20-16	0.5-1.25	.126	3.20	—	—	91536-1	—	455830-1/ 455822-2
26-22		0.12-0.3	.069	1.75	—	—	91529-1	—		
22-18		0.3-0.8	.094	2.39	—	—	91522-1	—		
MR Connectors	Contacts	20-16	0.5-1.25	.126	3.20	—	—	91594-1	—	
		26-18	0.12-0.8	.115	2.92	—	—	91526-1	—	
Dynamic	D-3(L)	20-18	0.50-0.85	.110	2.80	—	—	91558-1	—	—
		16	1.25	.110	2.80	—	—	—	—	
	D-3(M)	24	.20	.063	1.60	—	—	91559-1	—	—
		22-20	.30-.50	.102	2.60	—	—	—	—	
	D-3(2L)	16	1.23-1.42	.110	2.80	—	—	91560-1	—	—
		14	1.94-2.20	.110	2.80	—	—	—	—	
	D-2(S)	28-26	.09-.14	.051	1.30	—	—	91576-1	—	—
24		.22-.23	.056	1.43	—	—	—	—		
EI	EI	30-28	.05-.08	.047	1.20	—	—	91562-1	—	—
		26	.13	.055	1.4	—	—	—	—	
.040	.040	22	.30	.071	1.80	—	—	91577-1	—	—
		20	.50	.079	2.00	—	—	—	—	

<sup>1</sup> Use with "C" Head Straight Action Hand Tool, Part Number 69710-1.

Need More Information?

For information about tooling, call 1-800-522-6752  
or e-mail [toolsales@te.com](mailto:toolsales@te.com).

Connector/Terminal to Tool Reference, *continued*

Connector/ Terminal	Style	Wire Range		Max. Insul. Dia.		Hand Tool Part Numbers				Die Set for Tool Frame
		AWG	mm <sup>2</sup>	in	mm	DAHT	TETRA-CRIMP	T-HEAD	HHHT	
PIDG FASTON Receptacles (6409□□ P/N Series Only)	Insulated	22-18	0.3-0.8	.100	2.54	—	—	—	—	—
		16-14	1.25-2	.170	4.32	—	59824-1	—	—	—
		12-10	3-5	.250	6.35	—	—	—	—	—
PIDG Terminals and Splices, PLASTI-GRIP Terminals	Insulated	26-22	0.12-0.3	.082	2.08	46121	—	59275	—	69344 <sup>1</sup>
		22-16	0.3-1.25	.125	3.18	47386	59824-1	59250	—	47806-2 <sup>1</sup>
		16-14	1.25-2	.150	3.81	47387	59824-1	59250	—	47807-1 <sup>1</sup>
		12-10	3-5	.230	5.84	—	59824-1	—	59239-4	47808-6 <sup>1</sup>
		26-22	0.12-0.3	.080	2.03	46121	—	—	—	—
PLASTI-GRIP Butt Splices	Insulated	22-16	0.3-1.25	.170	4.32	45160	—	—	—	—
		16-14	1.25-2	.215	5.46	45575-1	—	—	—	—
		8	7	.377	9.58	—	—	—	69959	—
PLASTI-STRIP Terminals, Ultra-Fast Plus FASTON Receptacles	Insulated	22-18	0.3-0.8	.135	3.43	—	—	—	—	58079-3 <sup>2</sup>
		16-14	1.25-2	.160	4.06	—	—	—	—	58080-3 <sup>2</sup>
Ultra-Fast FASTON Tabs and Receptacles	Insulated	22-18	0.3-0.8	.230	5.84	—	—	—	—	90390-3 <sup>2</sup>
		16-14	1.25-2	.260	6.60	—	—	—	—	90391-3 <sup>2</sup>
		22-16	0.3-1.25	—	—	49935	—	—	—	47812 <sup>1</sup>
SOLISTRAND Terminals and Splices	Uninsulated	16-14	1.25-2	—	—	49935	—	—	—	47813 <sup>1</sup>
		12-10	3-5	—	—	49935	—	—	—	—
		8	7	—	—	—	—	—	69355	—

<sup>1</sup> Use with "C" Head Straight Action Hand Tool, **Part Number 69710-1**.

<sup>2</sup> Use with Platform Die Hand Tool, **Part Number 58078-3**.

Need More Information?

For information about tooling, call 1-800-522-6752  
or e-mail [toolsales@te.com](mailto:toolsales@te.com).

## CERTI-CRIMP Tooling Options

### Double Action Hand Tool (DAHT)

- Dies travel in arc-like path
- Locator on tools for FASTON, MATE-N-LOK, PIDG and PLASTI-GRIP
- Insulation adjustment on tools for FASTON, MATE-N-LOK, PIDG and PLASTI-GRIP terminals
- Approx. weight 1.2 lb [0.54 kg]



### T-HEAD Hand Tool

- Dies close in a straight line
- Locator
- Quick take-up on handle for holding terminal or splice in place
- Adjust insulation crimp with a 4-position screw
- Color coded
- Approx. weight 1.3 lb [0.59 kg]



### TETRA-CRIMP Hand Tool Part No. 59824-1

- Dies travel in arc-like path
- Multiple color-coded crimping cavities
- Terminal locator and wire stop
- Ratchet control release
- Approx. weight 1.4 lb [0.64 kg]



### Heavy Head Hand Tool (HHHT)

- Designed to terminate most large coaxial cable and heavy-gage wire
- Dies close in a straight line
- Locator and wire stop when applicable
- Insulation adjustment on tools for AMPLI-BOND, PIDG and PLASTI-GRIP
- Approx. weight 2.1 lb [0.95 kg]



### Platform Die Hand Tool Part No. 58078-3

- Same frame configuration as TETRA-CRIMP Hand Tool
- Dies are interchangeable
- Adjustable terminal locator
- Approx. weight 1.4 lb [0.64 kg]



### "C" Head Straight Action Hand Tool Part No. 69710-1

- Dies close in a straight line
- Dies are interchangeable
- Locators and other applicable features included with dies
- Approx. weight 1.9 lb [0.86 kg]



### Straight Action Hand Tool (SAHT)

- Dies close in a straight line
- Contact locator and support
- Wire stop
- Insulation crimp adjustment (4 positions)
- Ejects crimped contact
- Approx. weight 1.3 lb [0.59 kg]



Need More Information?

For information about tooling, call 1-800-522-6752 or e-mail [toolsales@te.com](mailto:toolsales@te.com).



### Fast Facts

- Highly visible, easier to load terminals
- “New” spring loaded retention feature
- Configured for CERTI-CRIMP II Heads
- Available with short and long handle tools
- Accurately locates the terminal for a more consistent crimp termination

### New Flip Locator for Premium CERTI-CRIMP II Hand Tools

TE Connectivity introduces a Flip Locator Hand Tool feature designed to provide the ultimate in terminal placement accuracy, increased efficiency and ease of use.

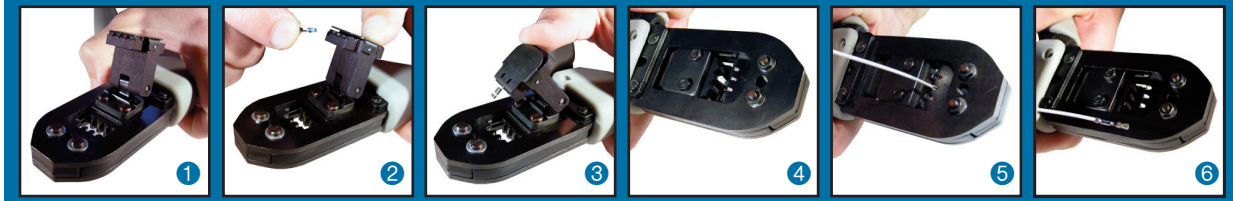
#### Function

The new wire size trends have translated into new operator, tooling, and application challenges. Small terminal handling is a particular challenge as terminals continue to miniaturize. In fact, TE Connectivity is working on a terminal that has a crimp width of only 0.015” (0.38 mm). This creates an enormous problem handling the terminal and locating it properly into a hand tool’s die set.

To help with the problem, TE is releasing its new “flip locator” on selected Premium CERTI-CRIMP II straight action hand tools. This TE flip locator system allows the operator to “flip” the locator approx 150 degrees, which provides exact placement of small terminals. After loading, the locator is “flipped” back into position and the terminal is properly located automatically. Now, with the terminal held in place, the operator can concentrate on proper wire placement and complete the termination process.

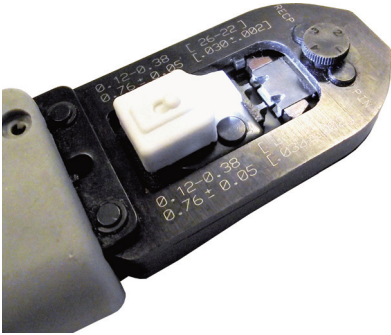
*Another Hand Tool Advantage from TE Connectivity.*

### Step-by-Step



Need More Information?

For information about tooling, call 1-800-522-6752 or e-mail [toolsales@te.com](mailto:toolsales@te.com).



### LightKnack for CERTI-CRIMP II Hand Tools

- Featured on All CERTI-CRIMP II Tools
- Illuminates the Crimp Area
- Eases the termination process
- Magnetic for a secure placement while maintaining flexibility
- Applicable for any Metallic Tool Surface
- Available separately in packs of 3

## Insertion/Extraction Tools

\*For Universal Handle (with adjustable strap) with short tip holder (1.87 [47.5]), specify "-1" suffix; with long tip holder (5.87 [149]), specify "-2" suffix.

Requires Installation Tip:

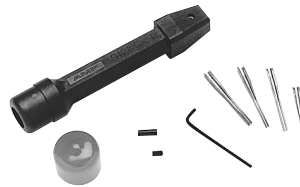
**Part Number 465468-1**

(≤ .185 [4.7] insul. dia. and/or crimp width) or

**Part No. 465488-1** (> .185 [4.7] insul. dia. and/or crimp width).



**Universal Handle**  
Part No. 465629-□\*



**Insertion/Extraction Tool**  
Part No. 91285-1



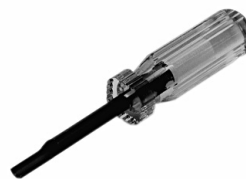
**Extraction Tool**  
Part No. 305183



**Extraction Tool**  
Part No. 318851-1



**Extraction Tool**  
Part No. 455822-2



**Extraction Tool**  
Part No. 465644-1



**Extraction/Lance Reset Tool**  
Part No. 843996-3

Need More Information?

For information about tooling, call 1-800-522-6752 or e-mail [toolsales@te.com](mailto:toolsales@te.com).

Catalog **65780** / 04-11 / Application Tooling

© 2011 Tyco Electronics Corp. AMP, AMPLI-BOND, AMPLIMITE, AMPMODU, CERTI-CRIMP, FASTON, MATE-N-LOK, PIDG, PLASTI-GRIP, PLASTI-STRIP, SOLISTRAND, T-HEAD, TETRA-CRIMP, The TE Connectivity (logo) and TE Connectivity are trademarks.

[www.tooling.te.com](http://www.tooling.te.com)

Tyco Electronics Corporation, Harrisburg, PA 17105, Phone: 717-564-0100; Fax 717-986-3316

