

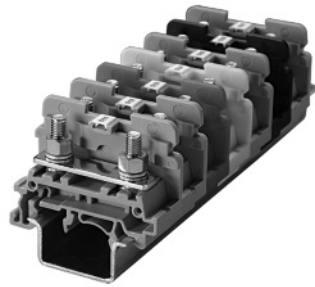
# Stud Type Block

Altech DIN rail mounting Stud Type Terminal Blocks are preferred for the connections that are subjected to very severe vibrations.

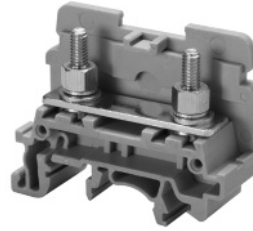
The wire is crimped to a ring / fork type lug and is screwed on to the flat current bar in terminal. The range includes terminal blocks for wires of size 22-4 AWG.

Jumpering can be achieved with the aid of external jumpers. The jumpers are insulated to make them shock proof. The terminal blocks have marker holding recess to accommodate MT type marking tags.

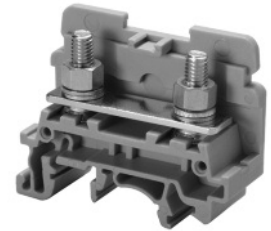
It is recommended to use protective covers in transparent plastic because assemblies of these terminals blocks are not fully covered.



**CSTSN4U**



**CSTSN5U**



Terminal Width	17 mm			17 mm		
Height x Length	39.5 x 50 mm			39.5 x 50 mm		
Stripping Length	12 mm			12 mm		
Insulation Material	Polyamide 6.6			Polyamide 6.6		
Type of Connection	2 screw connection for M4 ring/fork lugs			2 screw connection for M5 ring/fork lugs		
Approvals						
Wire Range	22-6 AWG	1.5-10 sq.mm	22-6 AWG	22-4 AWG	1.5-16 sq.mm	22-4 AWG
Voltage Rating	600 V	800 V	600 V	600 V	800 V	600 V
Current Rating	65 A	57 A	65 A	80 A	76 A	80 A
Torque	14 lb-in	1.2 Nm	14 lb-in	17.5 lb-in	2.0 Nm	17.5 lb-in

Other Approvals						
-----------------	--	--	--	--	--	--

	Cat. No.	Std. Pk.	Cat. No.	Std. Pk.
--	----------	----------	----------	----------

<b>Terminal Block</b>	<b>CSTSN4U</b>	100	<b>CSTSN5U</b>	100
-----------------------	----------------	-----	----------------	-----

End Plate	EPCSTSN5U	50	EPCSTSN5U	50
-----------	-----------	----	-----------	----

DIN Rail for ordering information refer to page 72		
--	--	--

End Stop for ordering information refer to page 74	CA702	50	CA702	50
	CA802	50	CA802	50

Protective Cover for covering	2 Terminal	CSTSPC1	100	CSTSPC1	100
	3 Terminal	CSTSPC1-1	100	CSTSPC1-1	100

Protective Cover in Length	100 mm	CSTSPC1-2	10	CSTSPC1-2	10
	200 mm	CSTSPC1-3	10	CSTSPC1-3	10
	300 mm	CSTSPC1-4	10	CSTSPC1-4	10

Insulated Removable Jumpers	2 way	CA514/1-2	100	CA514/1-2	100
	3 way	CA514/1-3	50	CA514/1-3	50
	4 way	CA514/1-4	50	CA514/1-4	50

Insulated Permanent Jumpers	2 way	CA514/3-2	100	CA514/3-2	100
	3 way	CA514/3-3	50	CA514/3-3	50
	4 way	CA514/3-4	50	CA514/3-4	50

Marking Tags (MT Type)	MT2	100	MT2	100
------------------------	-----	-----	-----	-----

**COLOR BLOCKS**  
(other than grey standard)

When ordering please add color suffix to Cat. No.

Example: CTS2.5U-N/R

<b>Color</b>	<b>Ordering Suffix</b>	
Red	R	
Blue	BU	
Black	BL	
Orange	O	
Green	G	
Yellow	Y	
White	W	
Beige	BG	
Dark Brown	DB	